



Inventory - Mobile devices

Capture of mobile and home office systems

TITLE	Inventory - Mobile devices
AUTHOR	Docusnap Consulting
DATE	8/16/2021
VERSION	1.0 valid from 8/16/2021

This document contains proprietary information and may not be reproduced in any form or parts whatsoever, nor may be used by or its contents divulged to third parties without written permission of Docusnap GmbH. All rights reserved.

CONTENTS

1. Introduction	4
2. Distribute the Tasks on the Systems	5
3. Inventory via a VPN Connection	6
3.1 Create task via Task Scheduler	6
4. Inventory with a OneDrive Storage	13
4.1 OneDrive setup	13
4.2 Task Scheduler	18
4.3 Import of the XML files	22

1. Introduction

Due to mobile workplaces, there are often Windows systems that cannot be inventoried directly via the Windows remote inventory. However, an important point of the inventory is that the devices' data is updated regularly.

The following HowTo shows two ways to automatically and regularly inventory these systems as well.

For the variants shown below, DocsunapScript.exe is used for the inventory in both cases. As a prerequisite, either a VPN connection of the system to the company's own network or a Microsoft OneDrive account is required.

- [Chapter 3](#) describes the inventory via a VPN connection
- In [Chapter 4](#) you will learn how the inventory can also be performed with a OneDrive account

2. Distribute the Tasks on the Systems

In this HowTo we will work with the Windows Task Scheduler. These tasks have to be distributed on the systems. There are different approaches for the distribution.

If the devices are used by users who at least partially log in to the office, a group policy can be used. As soon as a user is in the company, the group policy is applied to the system. The next time the user logs on outside the company, the task is executed.

Another possibility would be to create the task via a software distribution. How exactly this is done is up to the software distribution.

3. Inventory via a VPN Connection

The HowTo Inventory - Docusnap Script Windows describes how to run the DocusnapScript.exe automatically at user login. The result file is then stored on a shared directory.

The problem with VPN connections is often that users only start them manually after logging in. This means that the result file cannot be stored on the shared directory.

This chapter describes how to set up a task that runs DocusnapScript.exe once the VPN connection is established.

3.1 Create task via Task Scheduler

Start the Task Scheduler. You can search for the Task Scheduler using the Windows search.

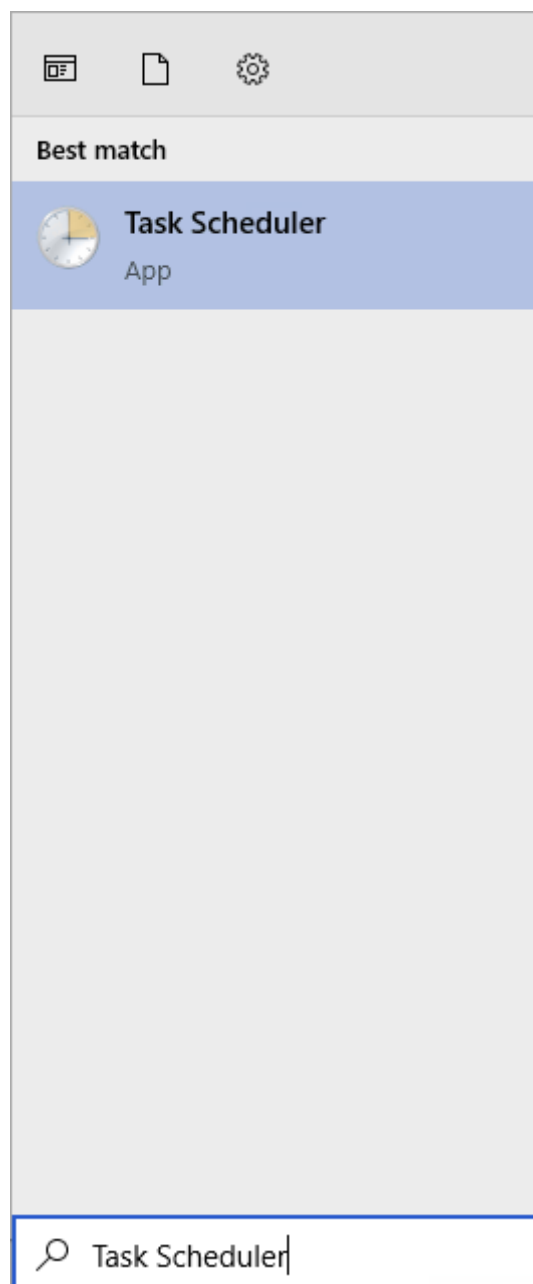


Figure 1 - Windows Search

Alternatively, you can also find it in the Windows Administrative Tools folder

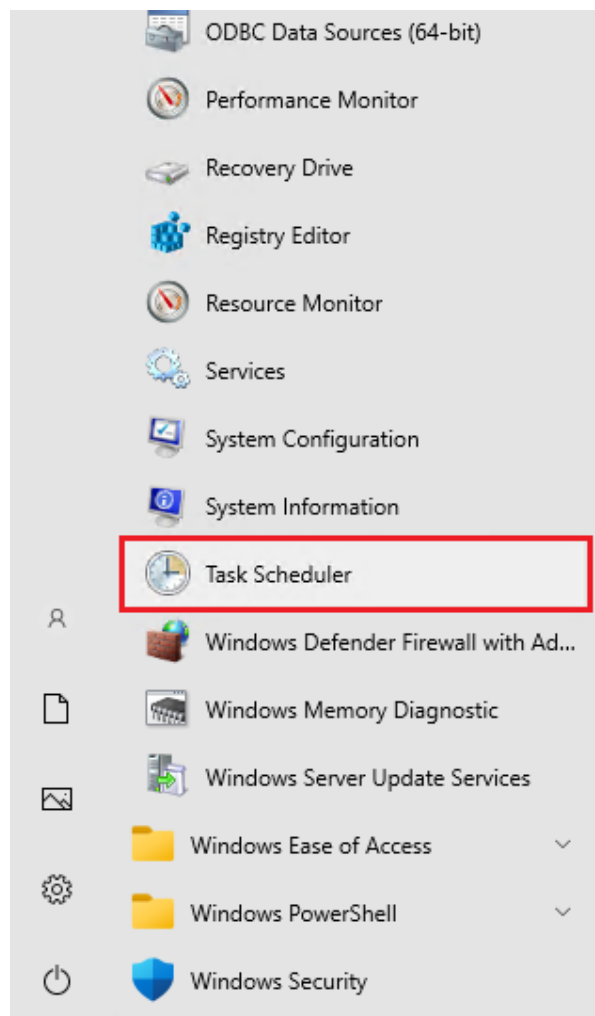


Figure 2 - Windows Administrative Tools

Open the context menu and select Create Task...

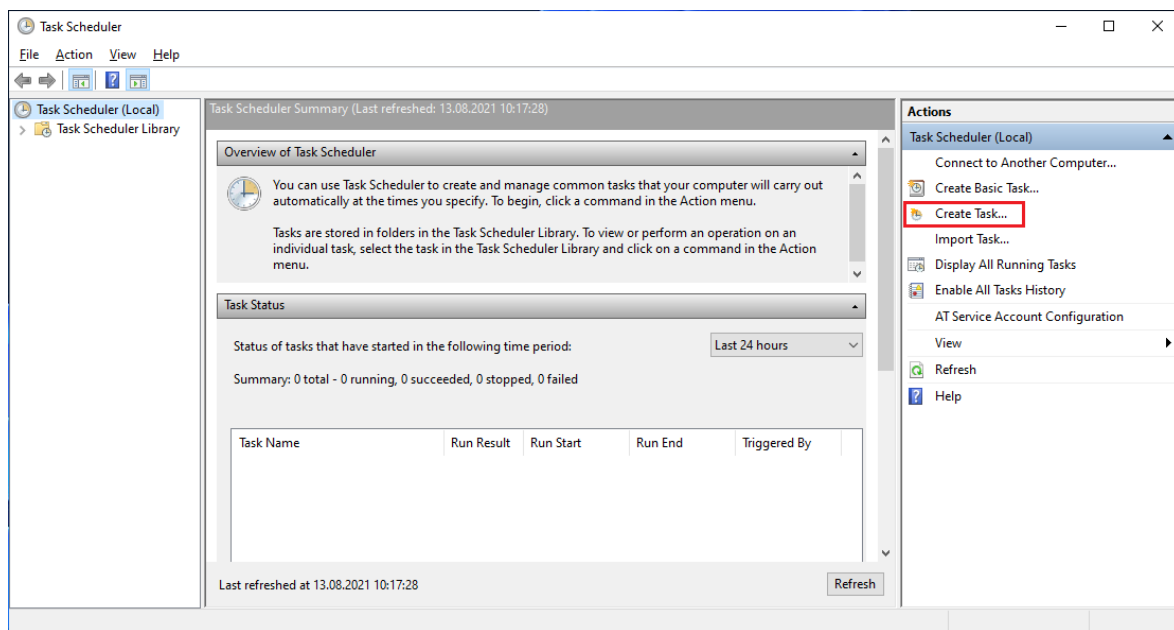
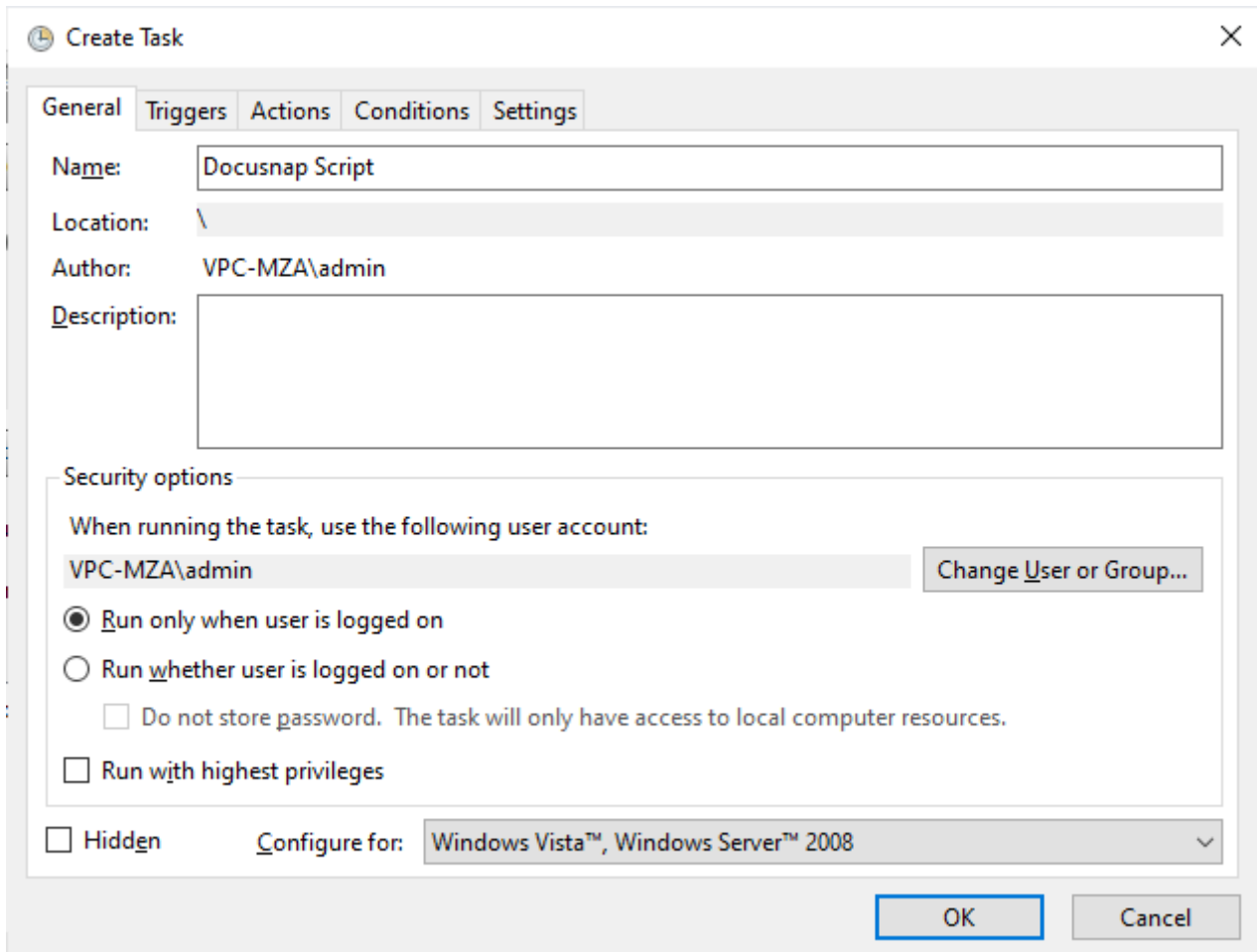


Figure 3 - Create Task

Configure the task as follows:

General

- Name
- Configure for: Select the appropriate operating system
- The remaining settings can be applied as suggested



The screenshot shows the 'Create Task' dialog box with the 'General' tab selected. The 'Name' field is 'Docusnap Script', 'Location' is '\', 'Author' is 'VPC-MZA\admin', and 'Description' is empty. Under 'Security options', the user account 'VPC-MZA\admin' is selected, and the radio button 'Run only when user is logged on' is chosen. The checkbox 'Do not store password. The task will only have access to local computer resources.' is checked. The checkbox 'Run with highest privileges' is unchecked. At the bottom, the 'Hidden' checkbox is unchecked, and the 'Configure for' dropdown is set to 'Windows Vista™, Windows Server™ 2008'. The 'OK' and 'Cancel' buttons are at the bottom right.

Field	Value
Name	Docusnap Script
Location	\
Author	VPC-MZA\admin
Description	
Security options	
When running the task, use the following user account:	VPC-MZA\admin
Change User or Group...	Change User or Group...
Run only when user is logged on	<input checked="" type="radio"/>
Run whether user is logged on or not	<input type="radio"/>
Do not store password. The task will only have access to local computer resources.	<input checked="" type="checkbox"/>
Run with highest privileges	<input type="checkbox"/>
Hidden	<input type="checkbox"/>
Configure for	Windows Vista™, Windows Server™ 2008

Figure 4 - Create Task – General

Triggers

To ensure that DocusnapScript.exe is not executed until the VPN connection is established, the trigger must be set to a specific Windows event.

- Begin the task: On an event
- Log: Microsoft-Windows-NetworkProfile/Operational
- Source: NetworkProfile
- Event ID: 10000

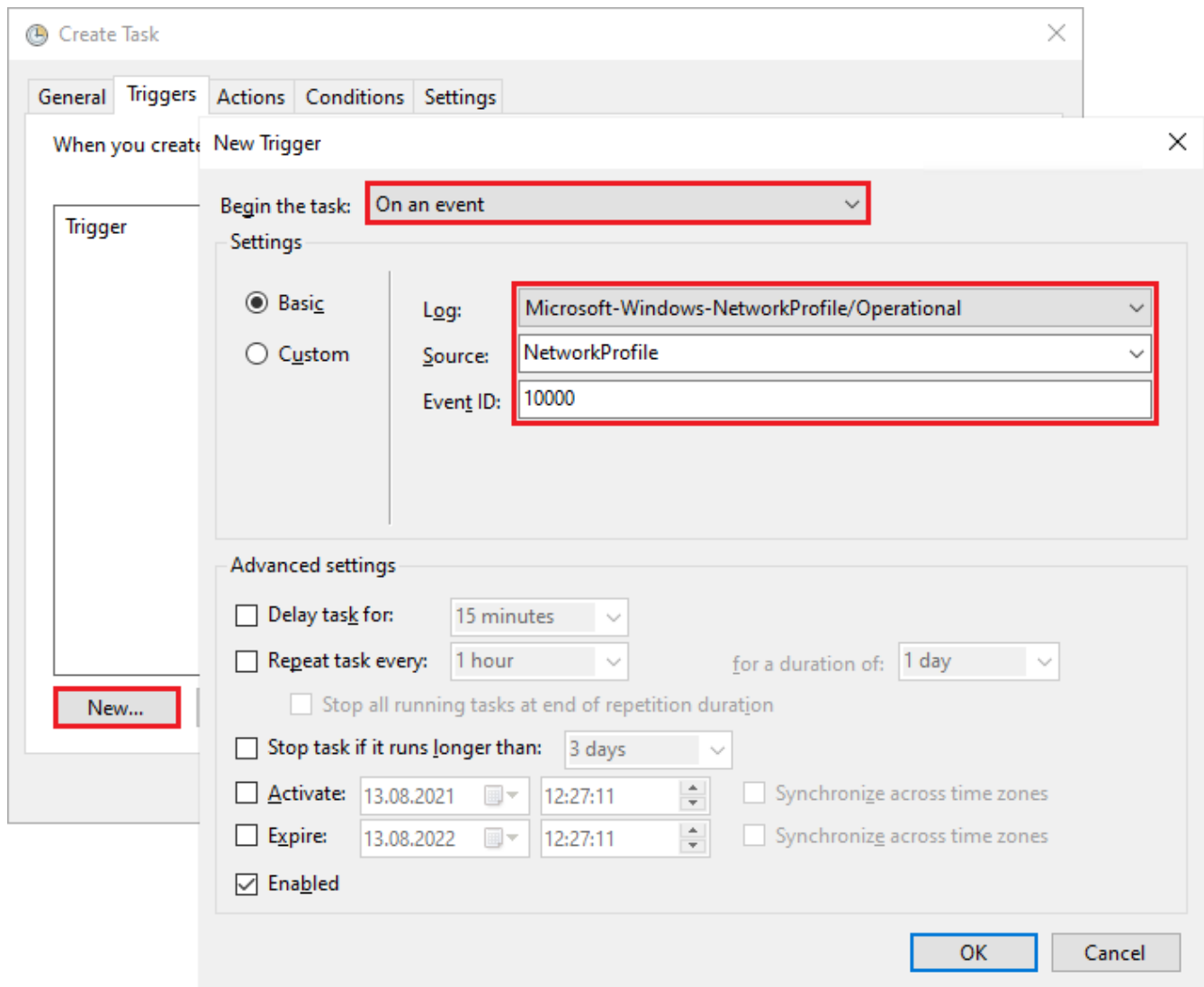


Figure 5 - Create Task – Trigger

Actions

Create a new action

- Action: **Start a program**
- Program/script: **Specify path to DocusnapScript.exe (UNC path)**
- Arguments: **-O Path to the location of the result file**

For more arguments, see the [HowTo Inventory - Docusnap Script Windows](#).

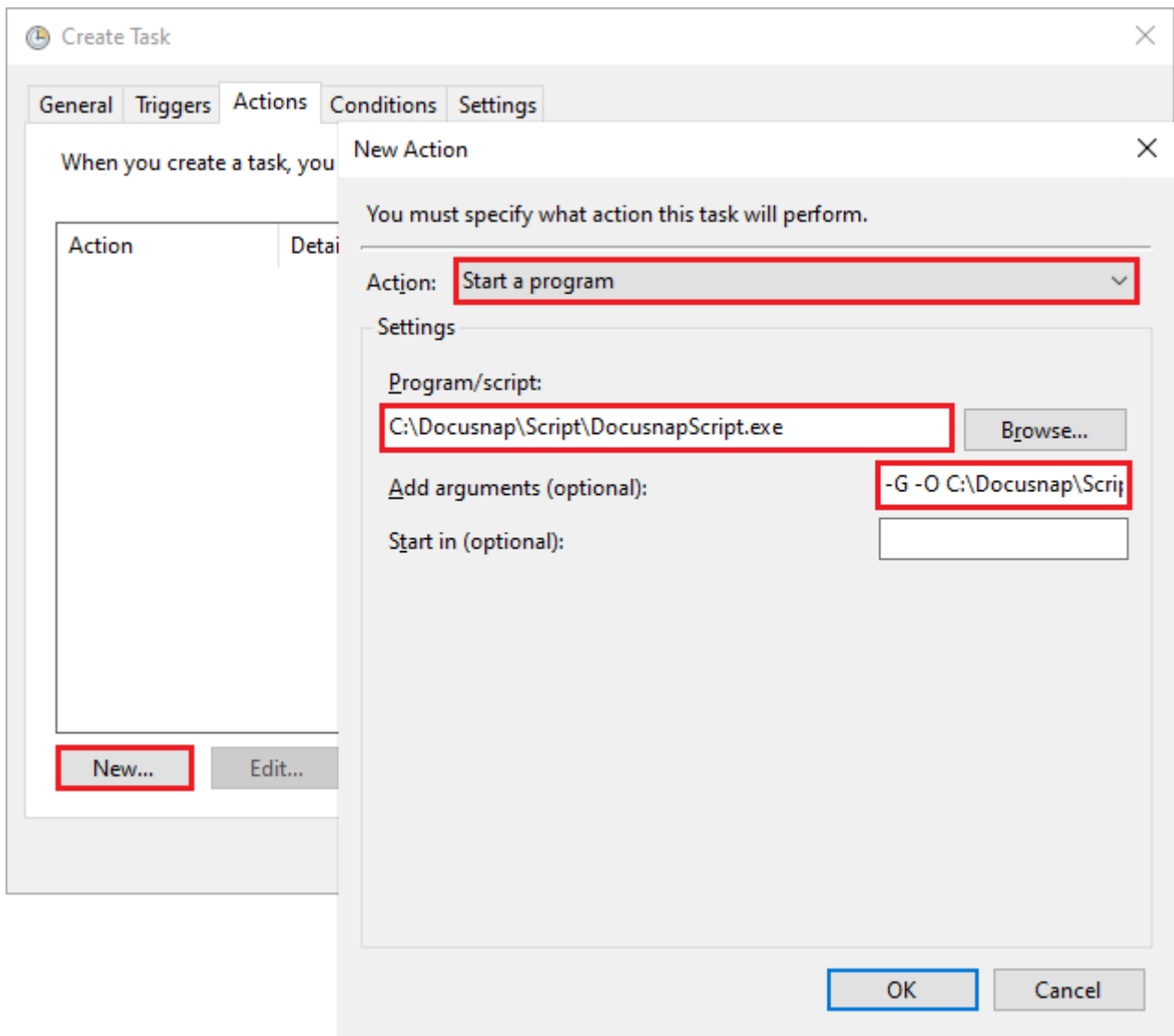
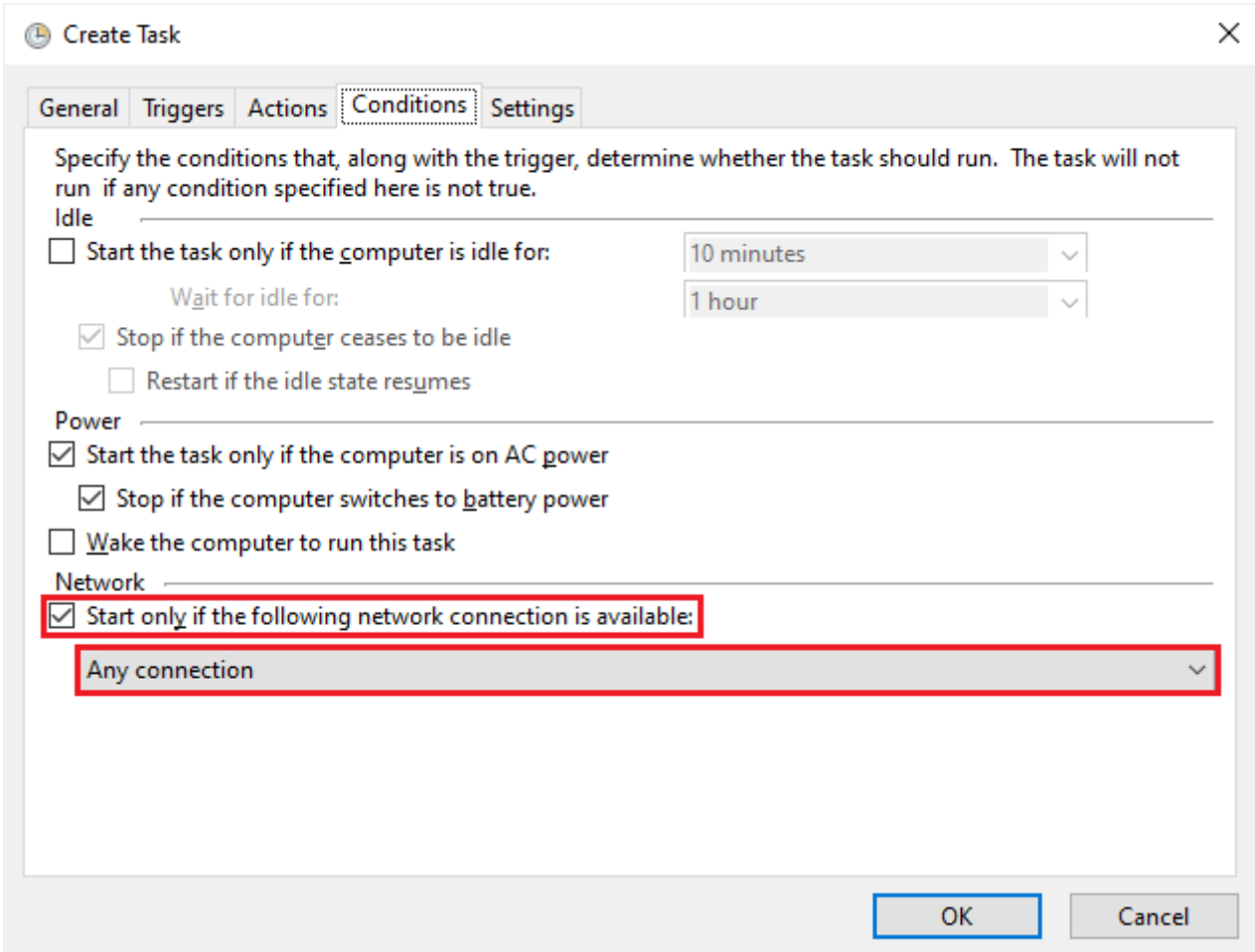


Figure 6 - Create Task – Action

Conditions

Optionally, the execution can be restricted to a specific network in the Conditions tab.



Create Task

General Triggers Actions **Conditions** Settings

Specify the conditions that, along with the trigger, determine whether the task should run. The task will not run if any condition specified here is not true.

Idle

☐ Start the task only if the computer is idle for: 10 minutes

Wait for idle for: 1 hour

☒ Stop if the computer ceases to be idle

☐ Restart if the idle state resumes

Power

☒ Start the task only if the computer is on AC power

☒ Stop if the computer switches to battery power

☐ Wake the computer to run this task

Network

☒ Start only if the following network connection is available:

Any connection

OK Cancel

Figure 7 - Create Task - Conditions

4. Inventory with a OneDrive Storage

The option in Chapter 3 requires a VPN connection on the systems. In this chapter, only a general Internet connection and a Microsoft OneDrive account are required. The steps shown can also be adapted to other cloud providers.

If users already have a personal OneDrive account on their system, an additional one must be added. This account will be used by all users with a mobile workspace.

4.1 OneDrive setup

A OneDrive account has to be added to the systems. By default, OneDrive uses a folder in the user directory. This path must be changed. For this, a new folder can be created in a central location - e.g. C:\Docusnap.

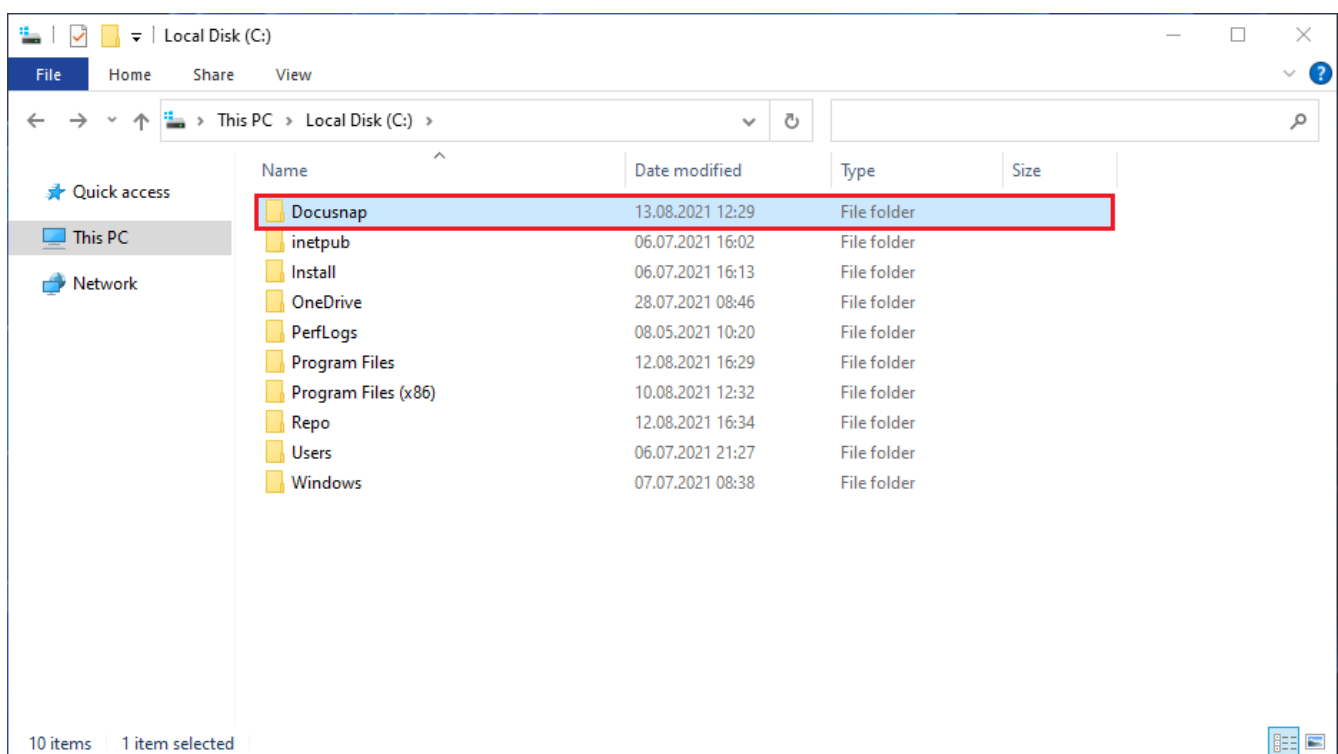


Figure 8 - OneDrive - Create Folder

The next step is to add the OneDrive account to the system.

During setup, the folder used by OneDrive can be changed. The folder created in step 4.1 will be entered here.

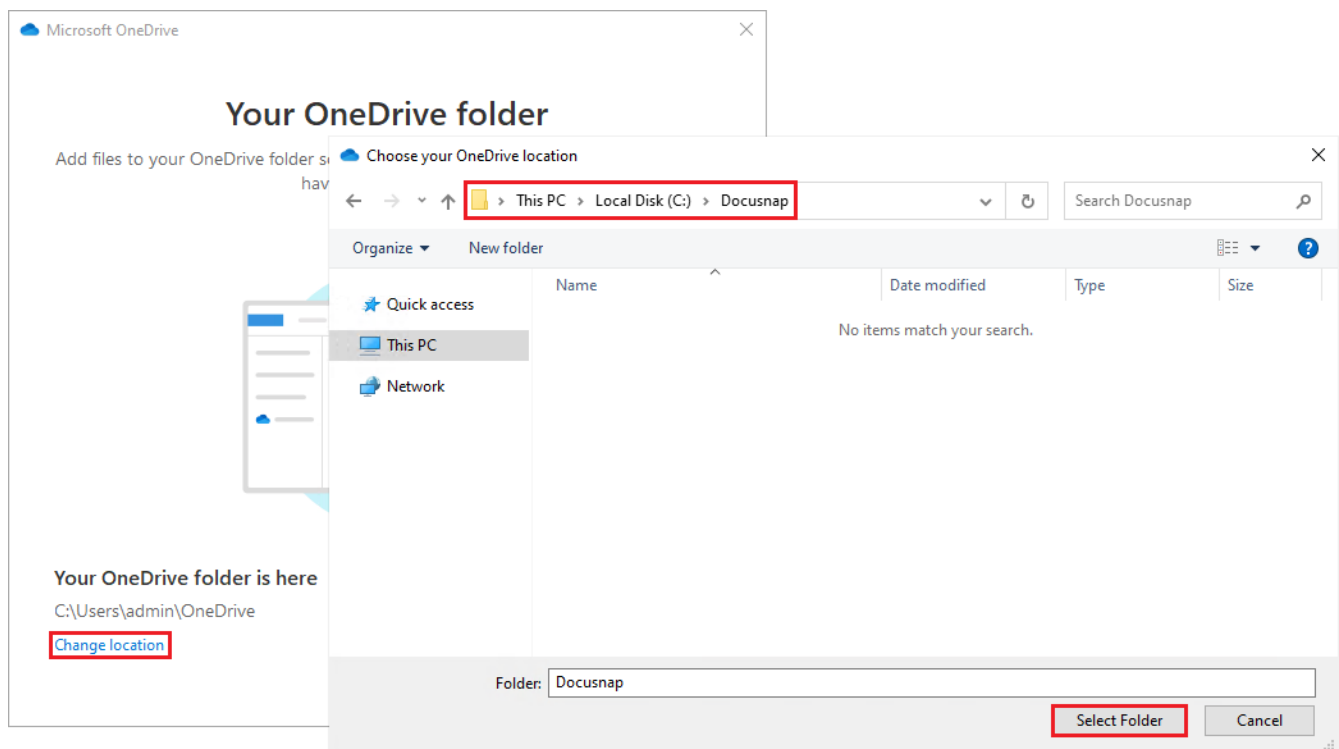


Figure 9 - OneDrive - Change Folder

This OneDrive account is only used for the DocusnapScript.exe and the result files. Therefore, in the **Backup your folders** step, everything can be deselected.

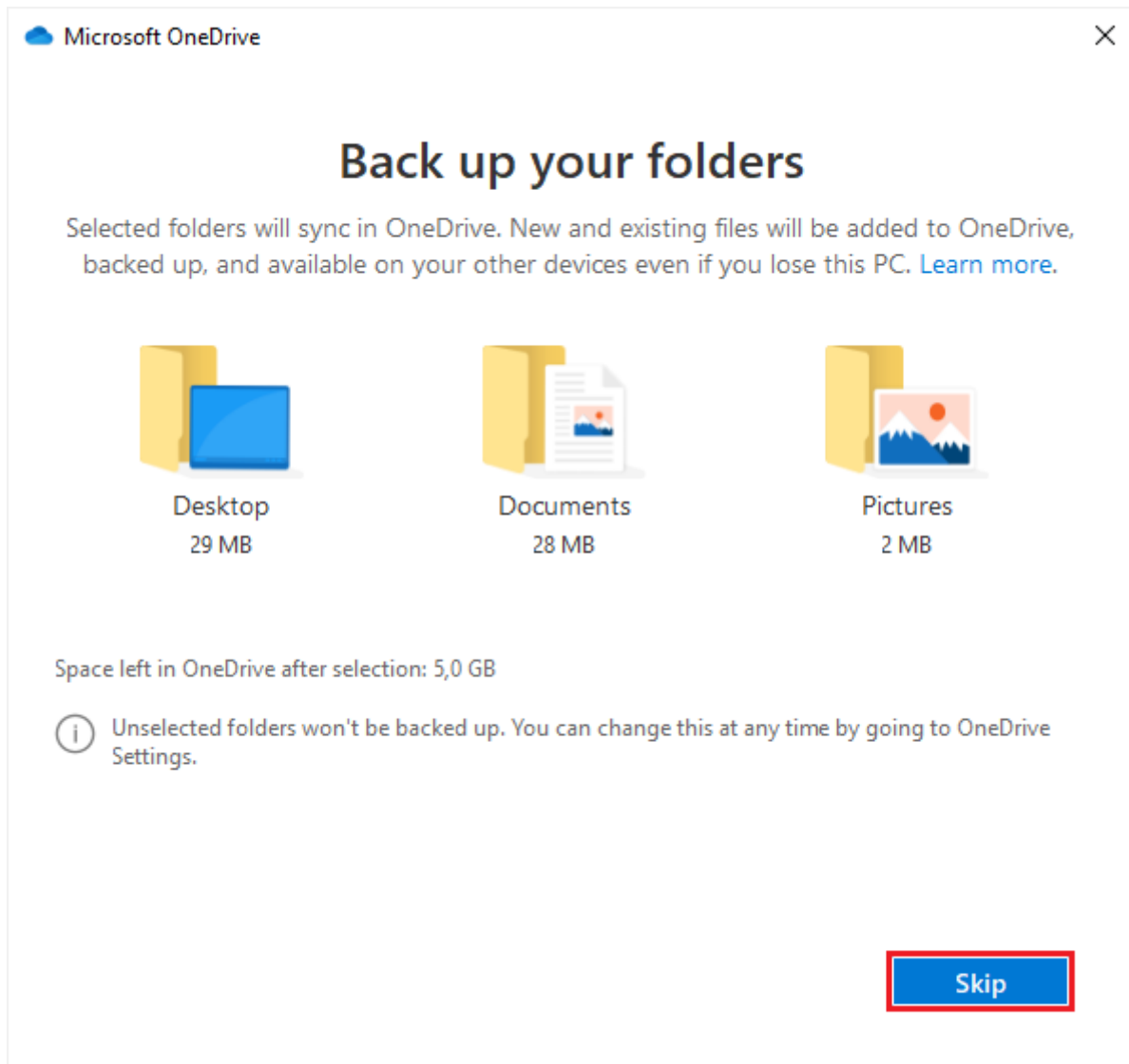


Figure 10 - OneDrive - Backup Folders

The OneDrive setup is complete and the folder should look like the one shown below.

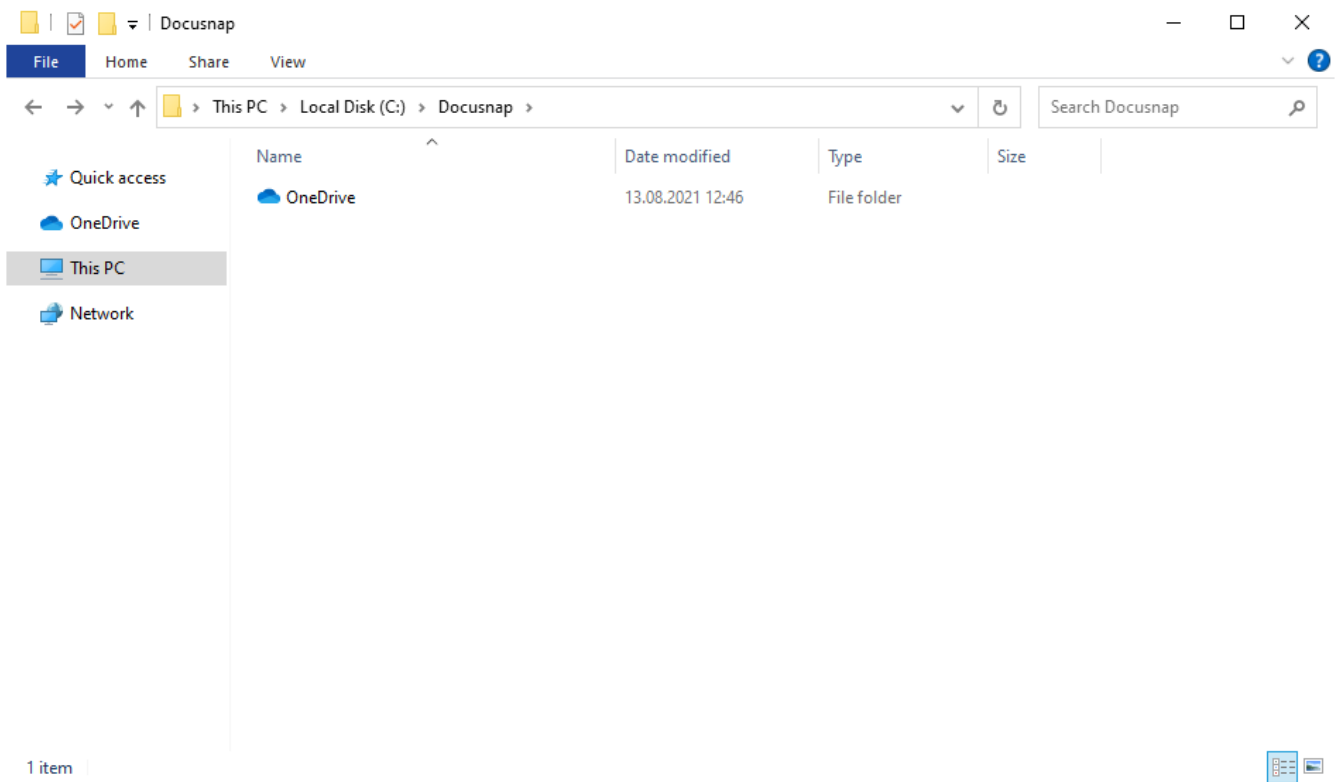


Figure 11 - OneDrive Folder

Additional folders can now be created in this directory.

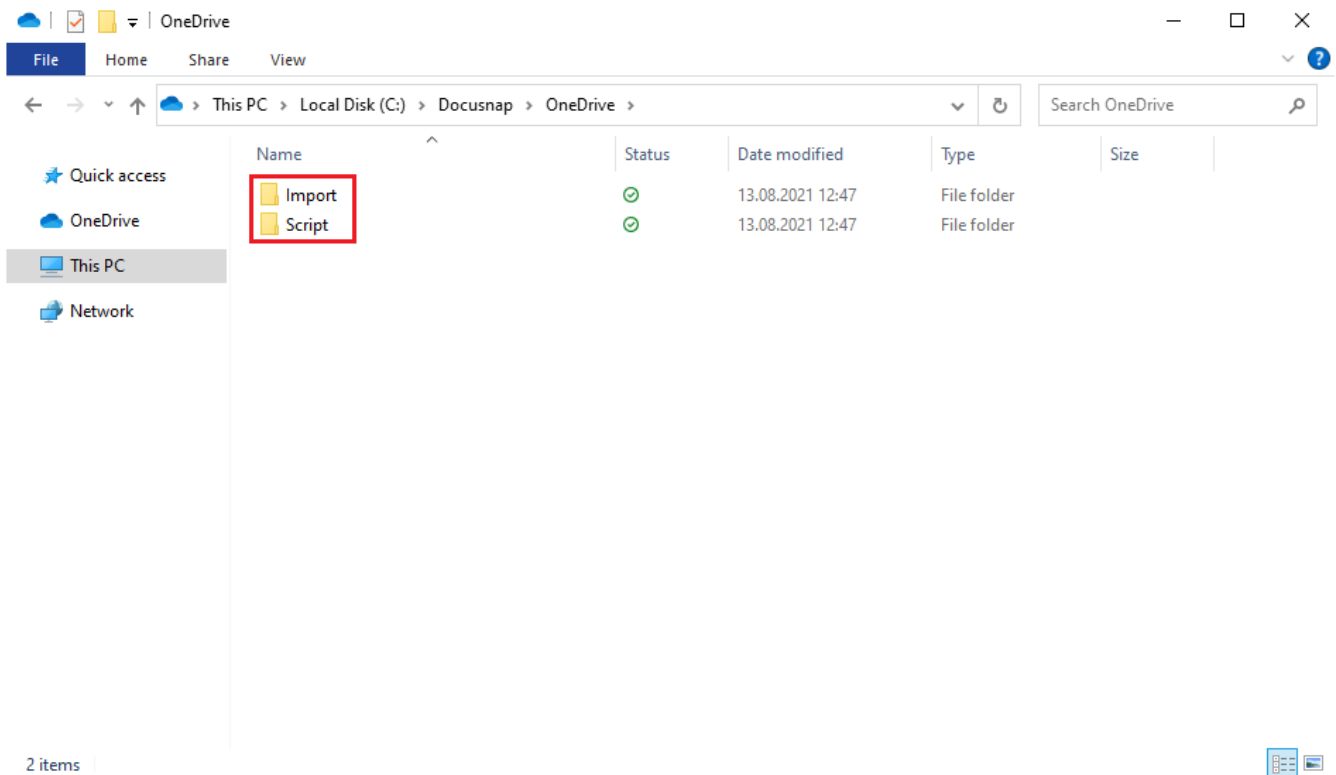


Figure 12 - OneDrive - New Folders

The latest DocusnapScript.exe is now placed in the Script folder. You can find it in the Tools folder in the Docusnap installation directory.

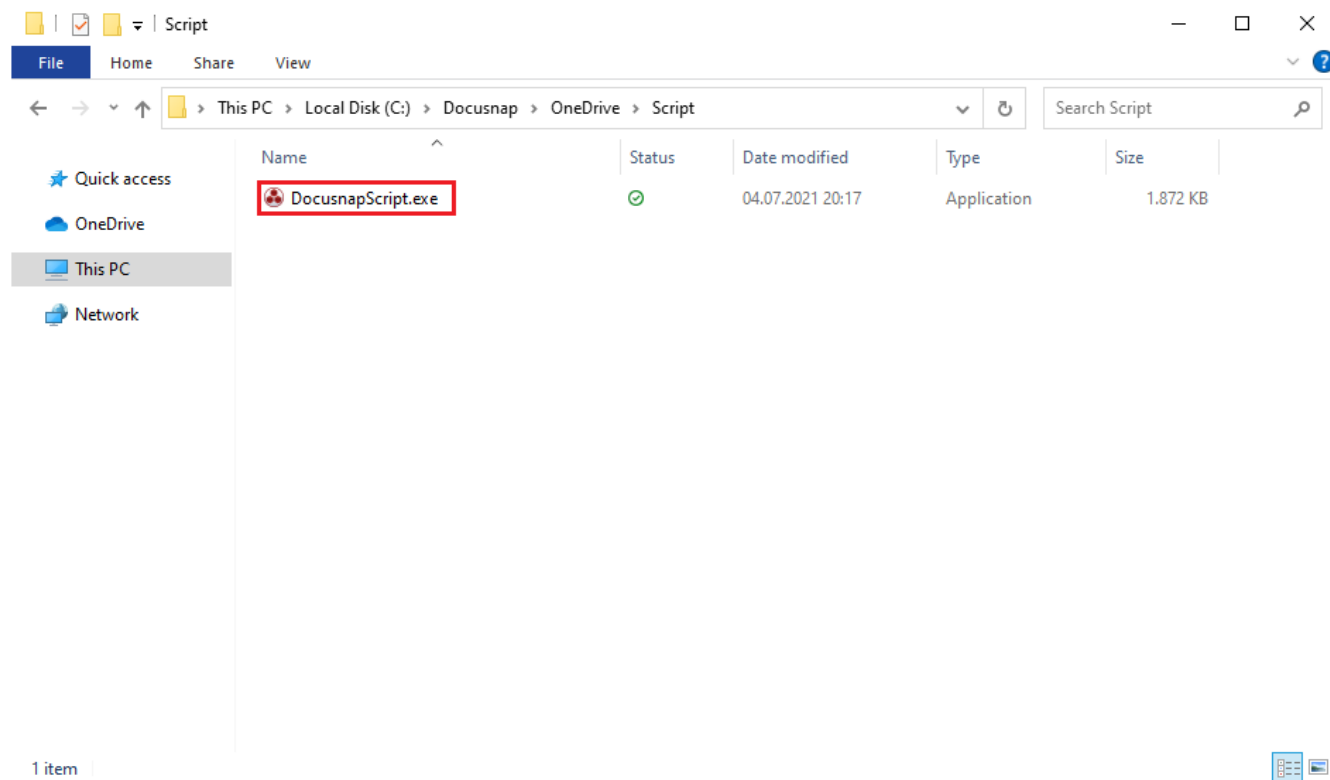


Figure 13 - DocusnapScript.exe

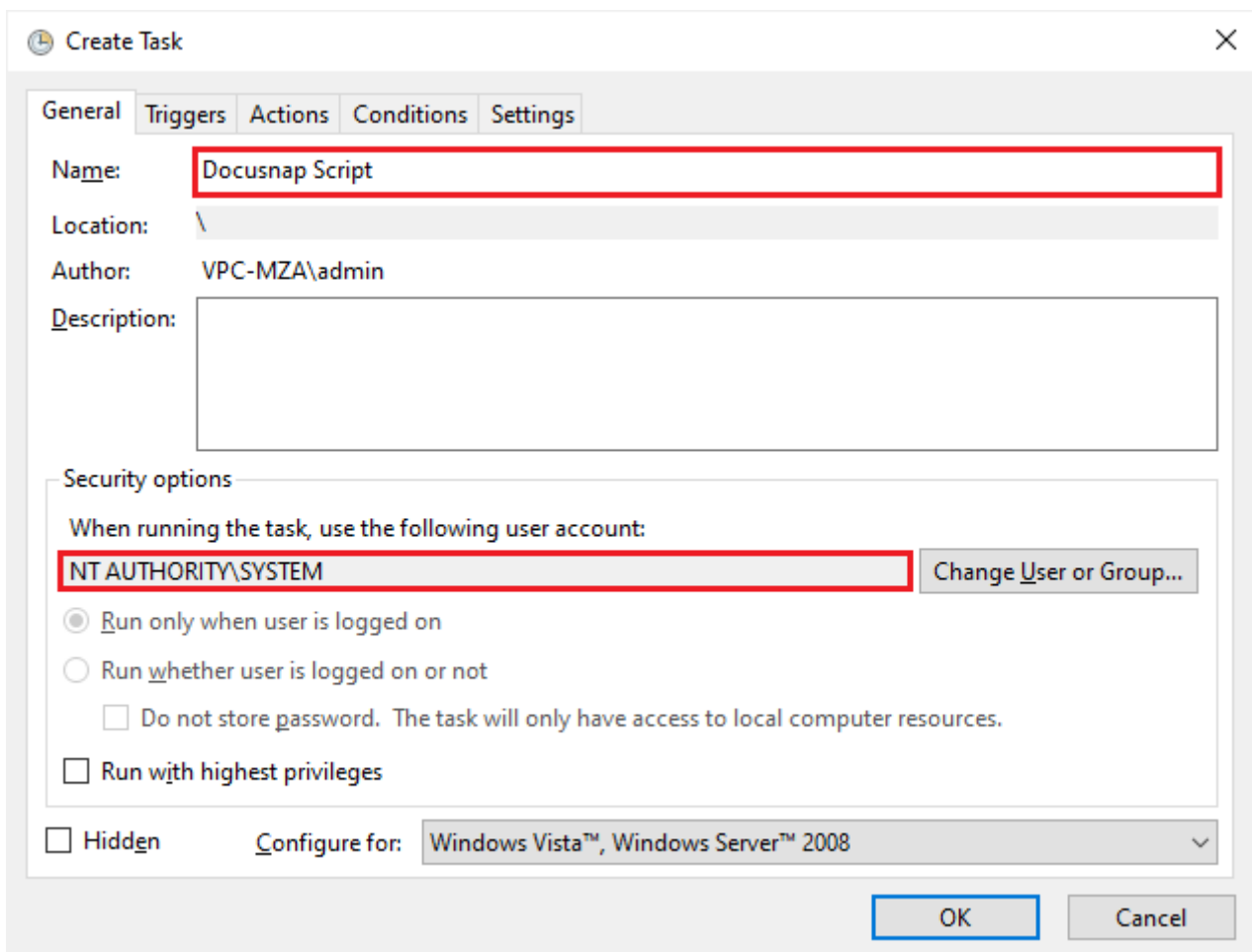
4.2 Task Scheduler

This method also uses Windows Task Scheduler for automated execution.

Configure the task as follows:

General

- Name
- Use the local system account for execution
- Configure for: Select the appropriate operating system

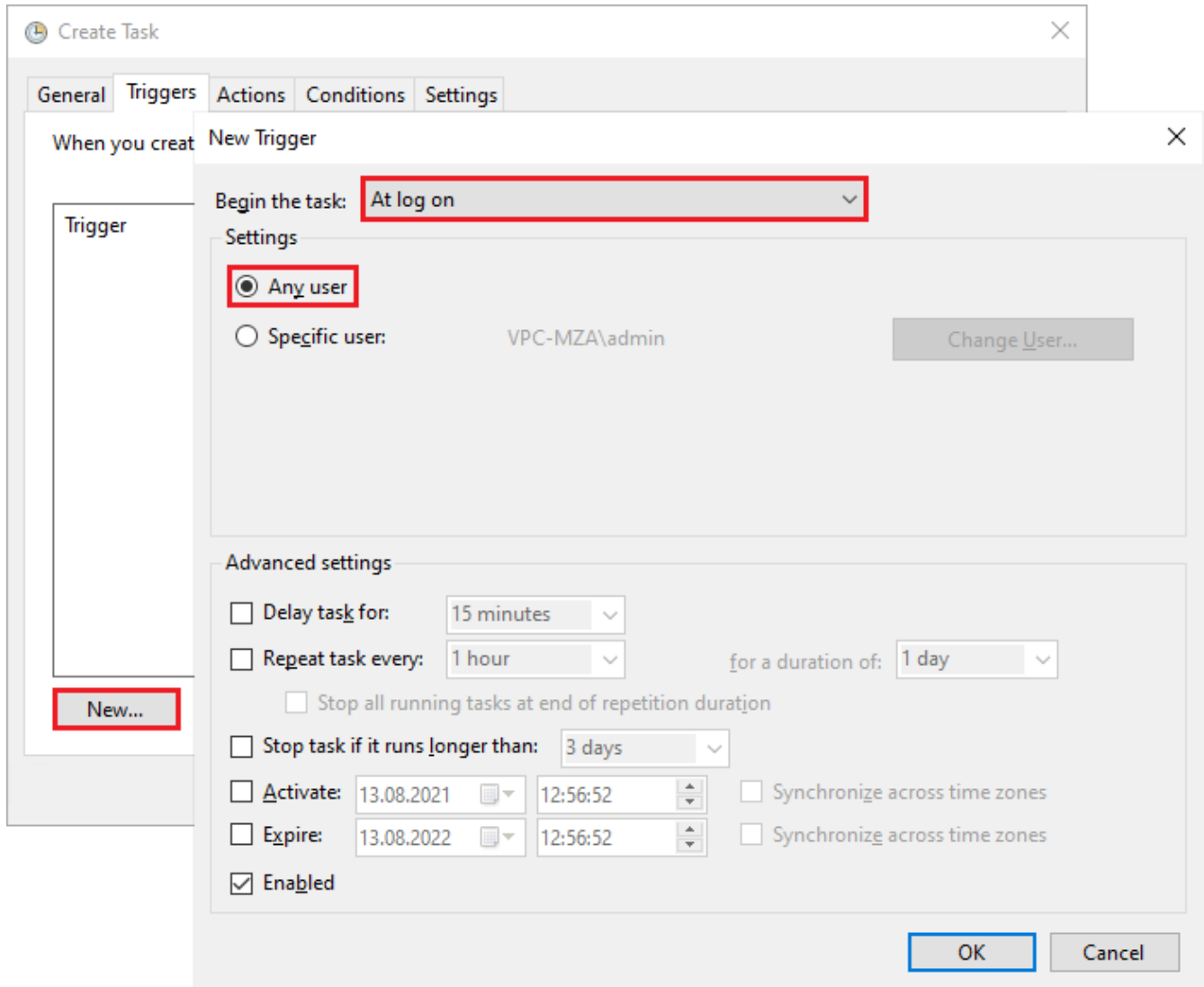


The screenshot shows the 'Create Task' dialog box in Windows Task Scheduler, with the 'General' tab selected. The 'Name' field is highlighted with a red box and contains the text 'Docusnap Script'. The 'Location' field is empty. The 'Author' field contains 'VPC-MZA\admin'. The 'Description' field is empty. In the 'Security options' section, the text 'When running the task, use the following user account:' is followed by a field containing 'NT AUTHORITY\SYSTEM', which is also highlighted with a red box. To the right of this field is a button labeled 'Change User or Group...'. Below this, there are three radio buttons: 'Run only when user is logged on' (selected), 'Run whether user is logged on or not', and 'Do not store password. The task will only have access to local computer resources.' (unchecked). There is also an unchecked checkbox for 'Run with highest privileges'. At the bottom, there is an unchecked checkbox for 'Hidden' and a 'Configure for:' dropdown menu set to 'Windows Vista™, Windows Server™ 2008'. The 'OK' and 'Cancel' buttons are at the bottom right.

Figure 14 - Create Task - General

Trigger

- Begin the task: At log on



Create Task

General | **Triggers** | Actions | Conditions | Settings

When you create a task:

Trigger: **New...**

New Trigger

Begin the task: **At log on**

Settings

☒ **Any user**

☐ Specific user: VPC-MZA\admin **Change User...**

Advanced settings

☐ Delay task for: 15 minutes

☐ Repeat task every: 1 hour for a duration of: 1 day

☐ Stop all running tasks at end of repetition duration

☐ Stop task if it runs longer than: 3 days

☐ Activate: 13.08.2021 12:56:52 ☐ Synchronize across time zones

☐ Expire: 13.08.2022 12:56:52 ☐ Synchronize across time zones

☒ **Enabled**

OK **Cancel**

Figure 15 - Create Task Trigger

Actions

- Action: Start a program
- Program/script: Specify path to the DocusnapScript.exe from the OneDrive folder.
- Arguments: -O Path to the location of the result file

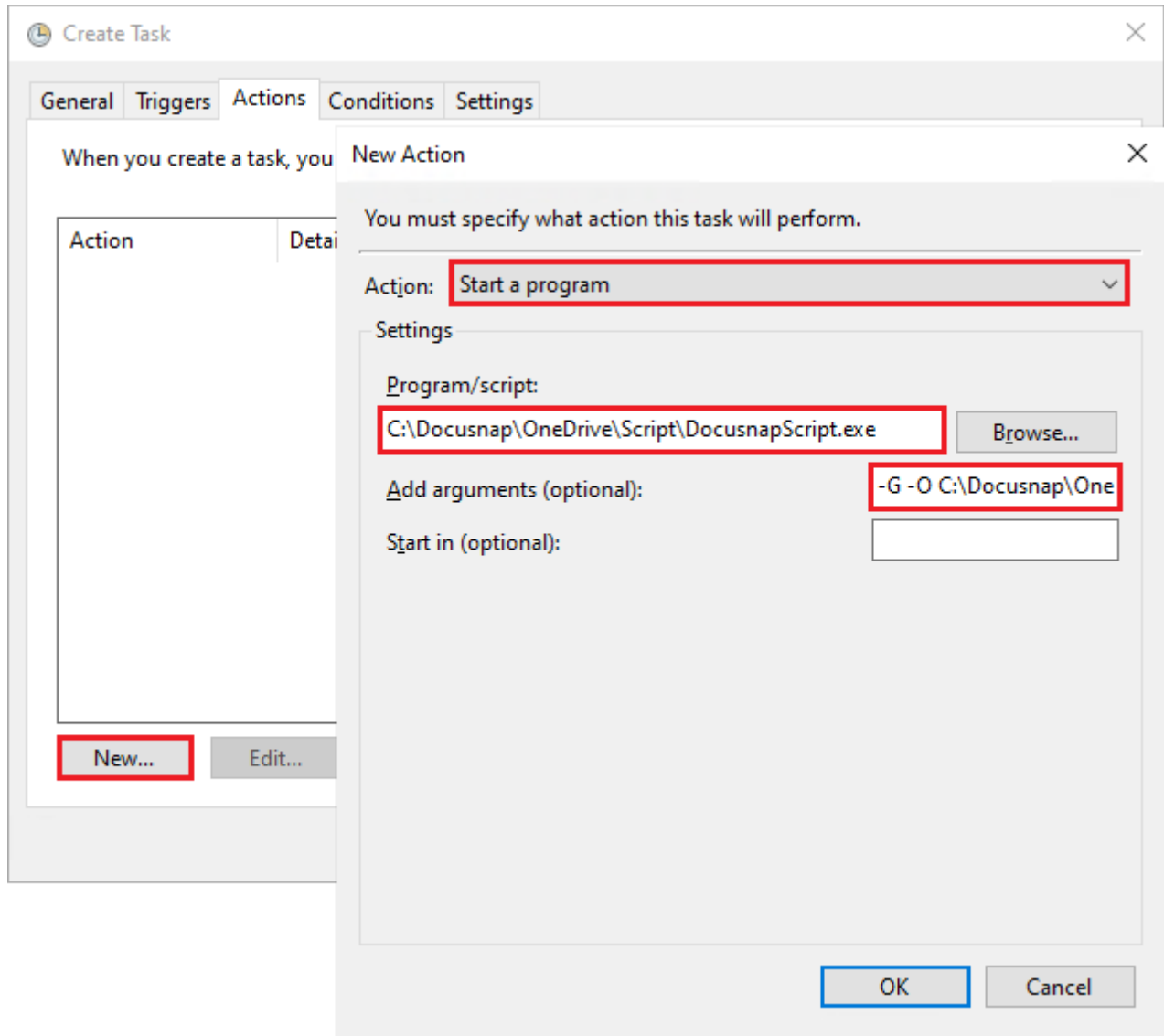
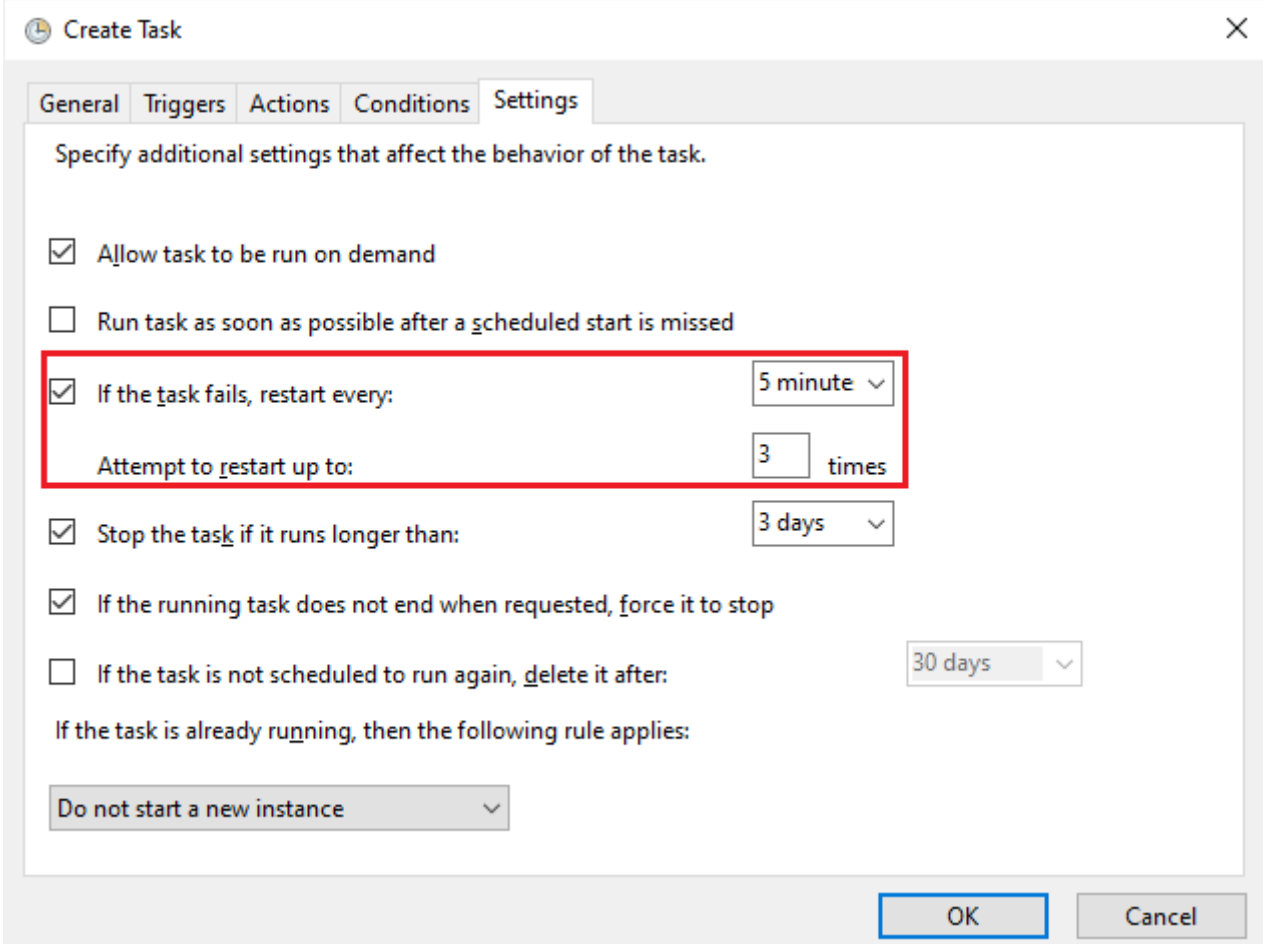


Figure 16 - Create Task - Action

Settings

It may happen that the scheduled task fails because the connection to the OneDrive account does not exist yet. To catch this error, you can specify in the settings that the task will be repeated several times in case of failure.



Create Task [X]

General Triggers Actions Conditions **Settings**

Specify additional settings that affect the behavior of the task.

- ☒ Allow task to be run on demand
- ☐ Run task as soon as possible after a scheduled start is missed
- ☒ If the task fails, restart every: 5 minute ▾
Attempt to restart up to: 3 times
- ☒ Stop the task if it runs longer than: 3 days ▾
- ☒ If the running task does not end when requested, force it to stop
- ☐ If the task is not scheduled to run again, delete it after: 30 days ▾

If the task is already running, then the following rule applies:

Do not start a new instance ▾

OK Cancel

Figure 17 - Create Task - Settings

4.3 Import of the XML files

For the automated import of the script result files to be possible, the OneDrive account must also exist on the importing system (Docusnap Server or Discovery Service System).

LIST OF FIGURES

FIGURE 1 - WINDOWS SEARCH	6
FIGURE 2 - WINDOWS ADMINISTRATIVE TOOLS	7
FIGURE 3 - CREATE TASK	8
FIGURE 4 - CREATE TASK – GENERAL	9
FIGURE 5 - CREATE TASK – TRIGGER	10
FIGURE 6 - CREATE TASK – ACTION	11
FIGURE 7 - CREATE TASK - CONDITIONS	12
FIGURE 8 - ONEDRIVE - CREATE FOLDER	13
FIGURE 9 - ONEDRIVE - CHANGE FOLDER	14
FIGURE 10 - ONEDRIVE - BACKUP FOLDERS	15
FIGURE 11 - ONEDRIVE FOLDER	16
FIGURE 12 - ONEDRIVE - NEW FOLDERS	16
FIGURE 13 - DOCUSNAPSCRIPT.EXE	17
FIGURE 14 - CREATE TASK - GENERAL	18
FIGURE 15 - CREATE TASK TRIGGER	19
FIGURE 16 - CREATE TASK - ACTION	20
FIGURE 17 - CREATE TASK - SETTINGS	21

VERSION HISTORY

Date	Description
8/16/2021	Document created