



Other Assets

Creation and Add-on of other Assets

TITLE	Other Assets
AUTHOR	Docusnap Consulting
DATE	11/3/2020
VERSION	2.0 valid from May 01, 2020

This document contains proprietary information and may not be reproduced in any form or parts whatsoever, nor may be used by or its contents divulged to third parties without written permission of Docusnap GmbH. All rights reserved.

CONTENTS

1.	Introduction	4
2.	Basic principles of pre-defined IT asset classes	5
2.1	Definition	5
2.2	Pre-defined classes of IT assets	5
2.3	Cloning of IT asset objects	5
3.	Creating IT asset objects	6
3.1	Example	6
3.2	Editor	8
4.	Reports and network map	9
4.1	Reports	9
4.2	Network map	11
5.	Import of IT assets	12
5.1	Data source	12
5.2	WI-FI address	12
5.3	Import wizard	13
5.4	Data assignment	16
5.5	Result	19
6.	Basic principles of custom IT asset	20
6.1	Management	20
6.2	Structure	21
6.2.1	Category / subcategory	21
6.2.2	Classes	21
6.2.3	Tab / section	21
6.2.4	Properties of IT assets	22
7.	Creating custom IT asset classes	26
7.1	Creating an IT asset	26
7.2	Setting up properties	28
7.2.1	Cloning class	29
7.3	Defining a display field	30
8.	Import / export scheme	31

1. Introduction

If there are systems that are not inventoried or discovered automatically by Docusnap, IT Assets come very handy. IT Assets are comfortably collected manually or via data import.

By default, Docusnap contains several pre-defined classes of IT Assets which can be very flexibly enhanced or complemented. Additional classes or types can be implemented – the necessary interfaces are already included by Docusnap.

The various IT Assets can be referred to in concepts, diagrams, reports as well as license management and plans.

The following document describes the creation of IT asset objects from pre-defined IT asset classes as well as the creation of custom IT asset classes.

An example of an appliance is shown in the creation of mobile phones and the relating import as well as the creation of the IT asset class Beamer.

2. Basic principles of pre-defined IT asset classes

2.1 Definition

The section IT Assets offers the possibility to define IT relevant assets within Docusnap that would not be discovered in the regular inventory process.

Such assets might be, but not limited to:

- Infrastructural elements of datacenters such as air conditioning, emergency power supply or racks,
- IT-systems such as electronic cash registers, mobile phones or tablets,
- Structural components such as access control or fire alarm system

The implemented IT Assets can be used in concepts, diagrams, reports, license management and plans. Examples can be found in the following How-To.

2.2 Pre-defined classes of IT assets

In Docusnap, classes are already predefined, for example

- Air conditioning
- Biometric access control (e.g. fingerprint)
- Access system
- Emergency power supply
- Fire-extinguishing system
- Patchpanel
- Racks
- Oscilloscope
- Digital multi-meter
- Cash register systems
- ATM
- Apple iPhone
- Nokia Windows Phone
- HTC & Samsung Android mobile phones
- Blackberry
- Samsung Galaxy Tab
- Windows Surface
- Apple iPad

Of course, additional classes of IT Assets can be implemented. The necessary steps are described in chapter six.

2.3 Cloning of IT asset objects

An existing IT asset object can be duplicated using the context menu by clicking the right mouse button. By duplicating an IT asset object, all existing values are copied besides the value that was defined in the display panel, which needs to be specified in the editor section of the IT asset. This functionality may be a substantial help in the case of the creation of several objects of the same type and manufacturer while only a few attributes are changing – e.g. the IP-address of the asset.

3. Creating IT asset objects

3.1 Example

This section provides an example of applying an IT asset object of the type Apple iPhone in Docusnap, section Inventory.

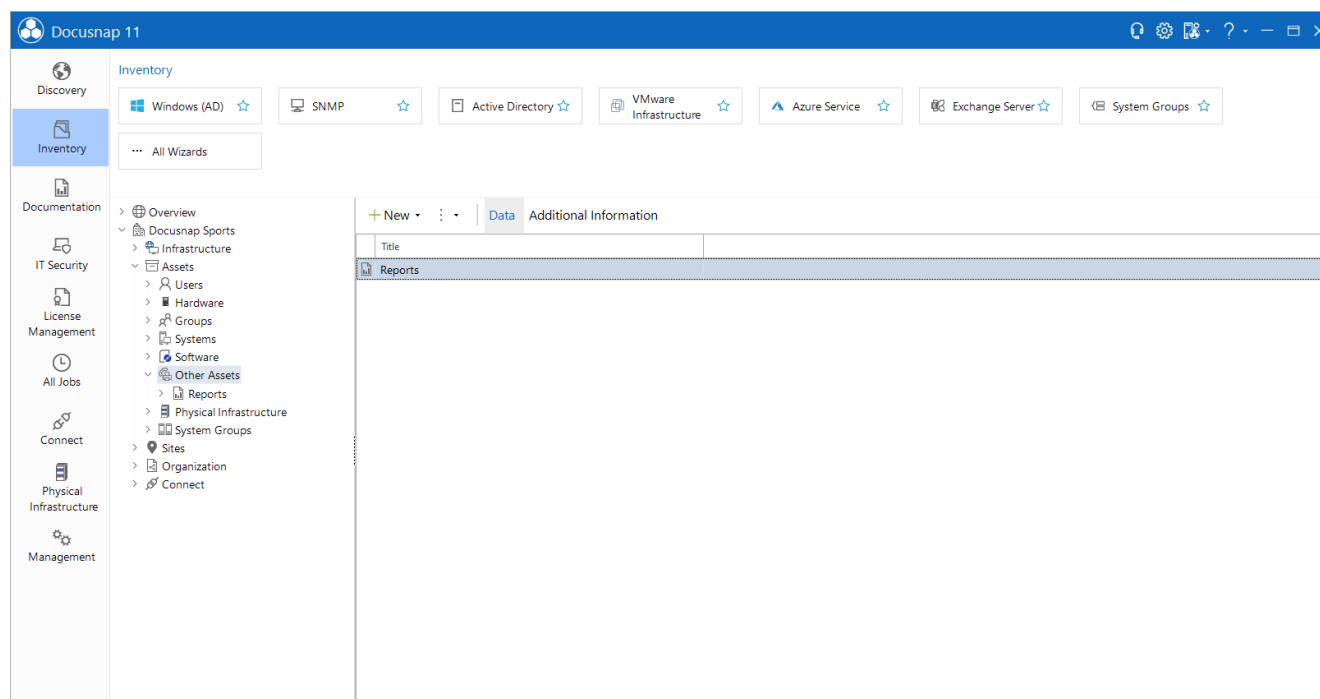


Figure 1 - IT assets in Docusnap

A directory is created just below of IT Assets in order to contain the IT Asset object, which enables the grouping of several objects. This is to be done via the context menu by clicking with the right mouse button on the object *IT Assets, Create Directory*.

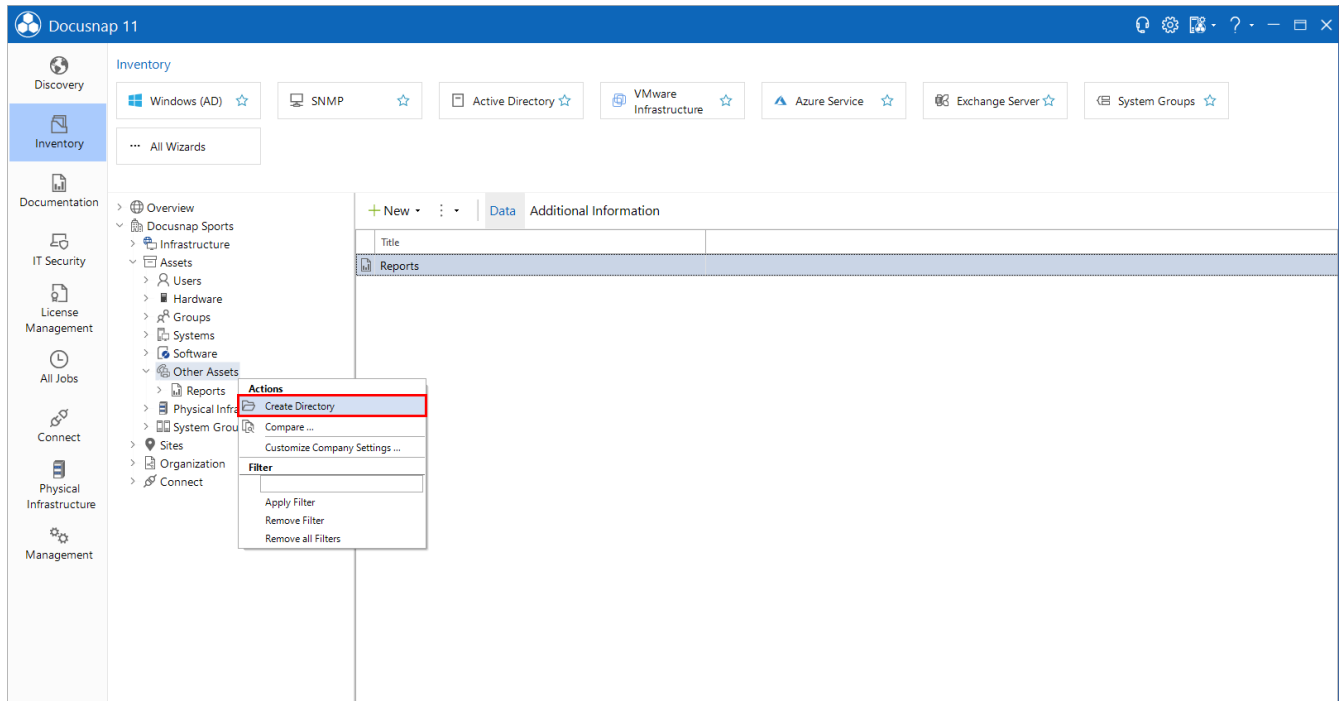


Figure 2 - Create Directory

Using the context menu (right mouse button) of the previously created directory, an IT Asset object of the type Apple iPhone can be created.

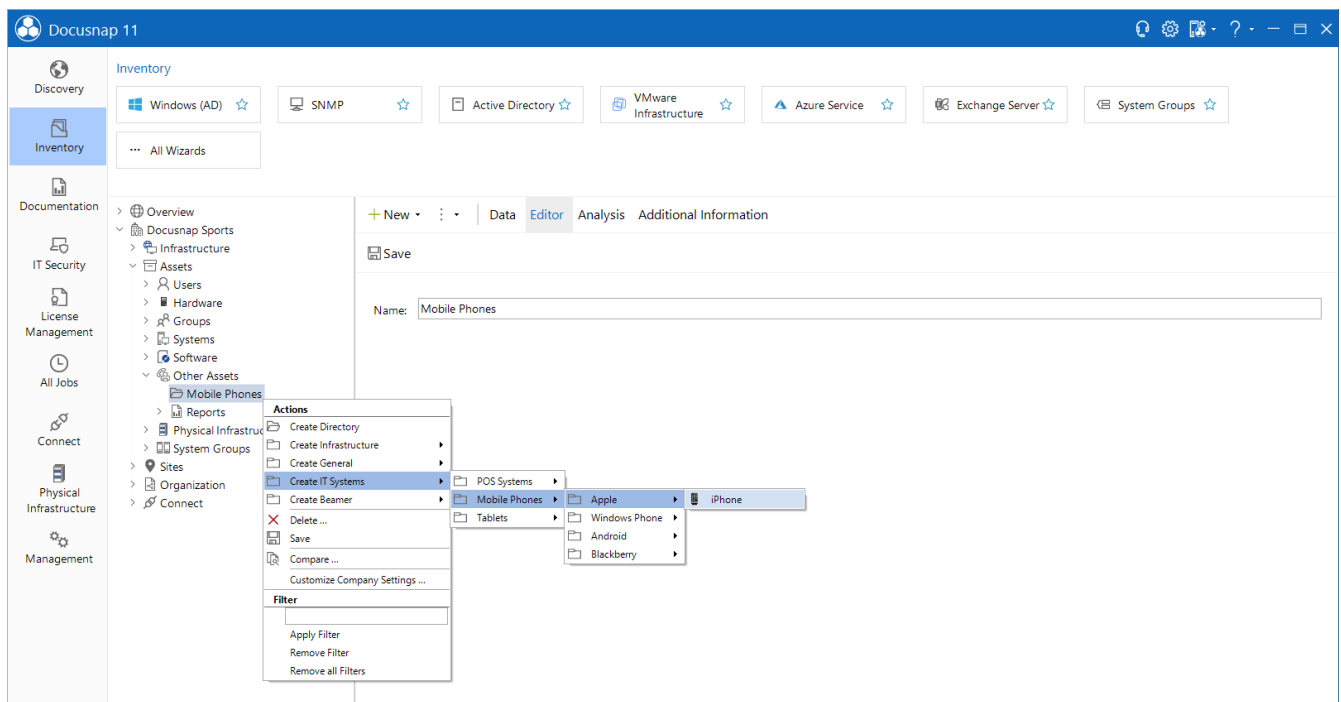
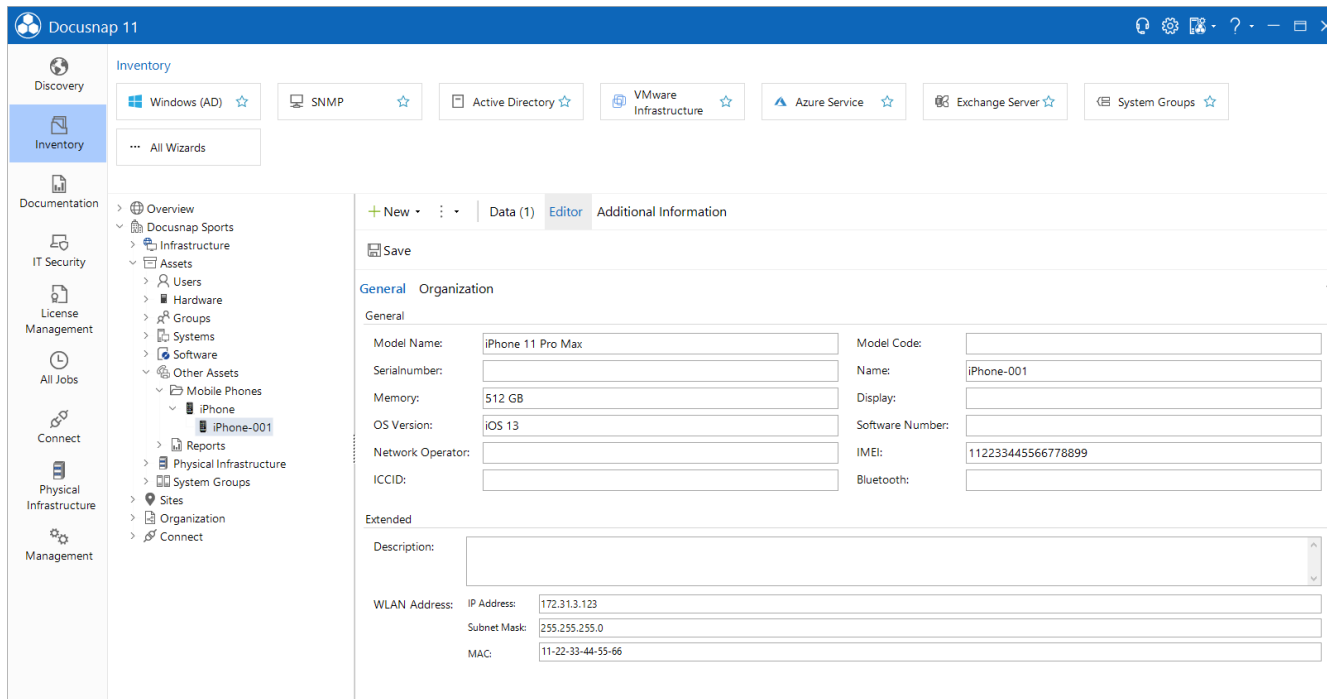


Figure 3 - Create an IT asset Object

3.2 Editor

The attributes of the mobile phone can be entered in the Editor and confirmed by saving.



The screenshot shows the Docusnap 11 application window. The left sidebar contains a navigation menu with categories like Discovery, Inventory, Documentation, IT Security, License Management, All Jobs, Connect, Physical Infrastructure, and Management. The 'Inventory' section is expanded, showing a tree view of assets. The main area displays the 'Editor' tab for an asset named 'iPhone-001'. The form is divided into sections: 'General' and 'Extended'. The 'General' section includes fields for Model Name (iPhone 11 Pro Max), Model Code, Serialnumber, Memory (512 GB), OS Version (iOS 13), Network Operator, ICCID, Name (iPhone-001), Display, Software Number, and IMEI (112233445566778899). The 'Extended' section includes a Description field and a 'WLAN Address' section with fields for IP Address (172.31.3.123), Subnet Mask (255.255.255.0), and MAC (11-22-33-44-55-66).

Figure 4 - Data input of the IT asset

If an IT Asset contains network information, Docusnap will try to contain the devices automatically in the network and topology map.

4. Reports and network map

4.1 Reports

There are two reports on IT assets included by default in Docusnap:

- Asset category
- Asset objects

The report Asset category allows the user to select which categories of IT Assets are to be displayed in the report with all their respective information.

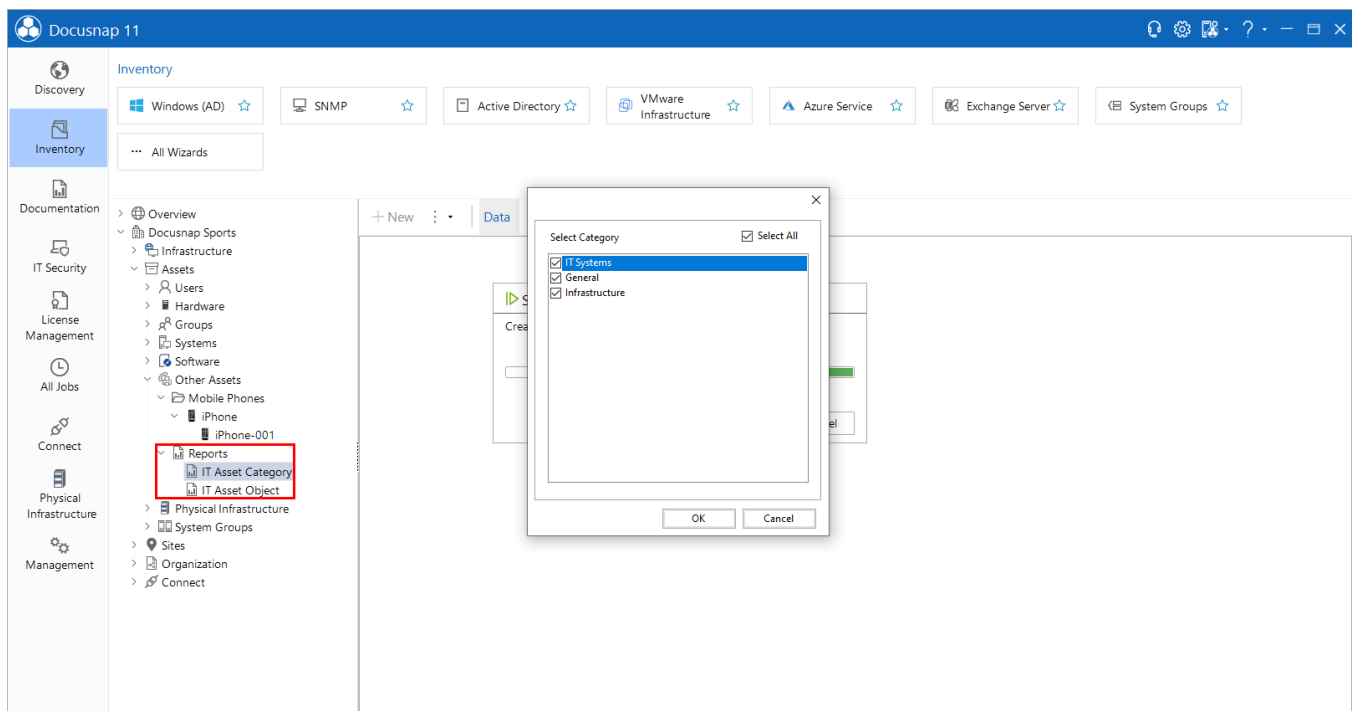


Figure 5 - Select the IT asset category

After confirmation, the report will display all information on the existing IT Assets of the selected categories.

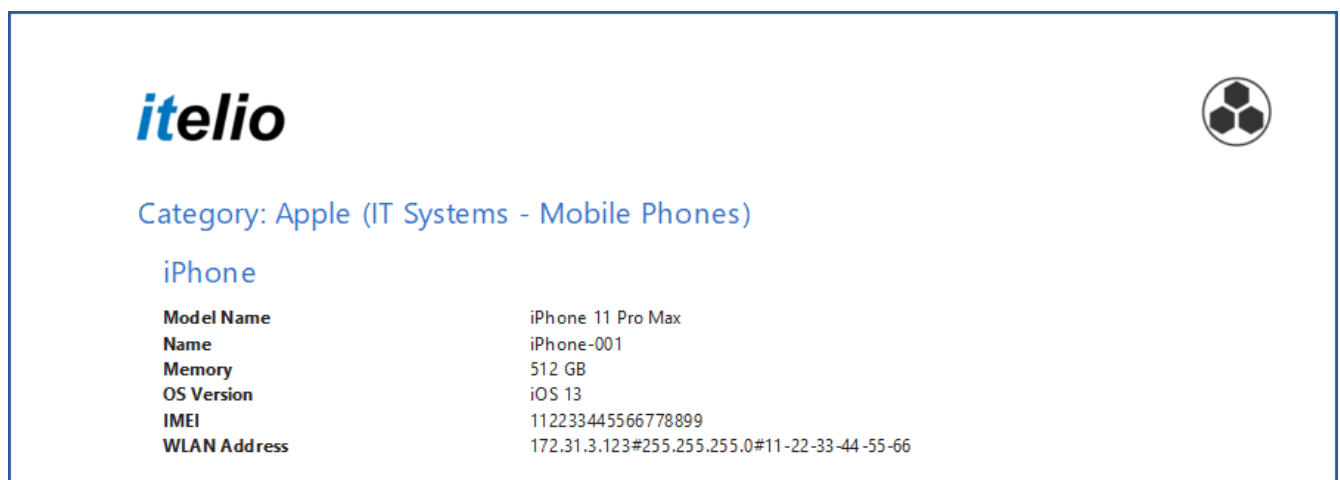


Figure 6 - Report output

The report Asset objects is different to the report Asset categories: only the various objects of IT Assets can be pre-selected in order to be shown in the final report.

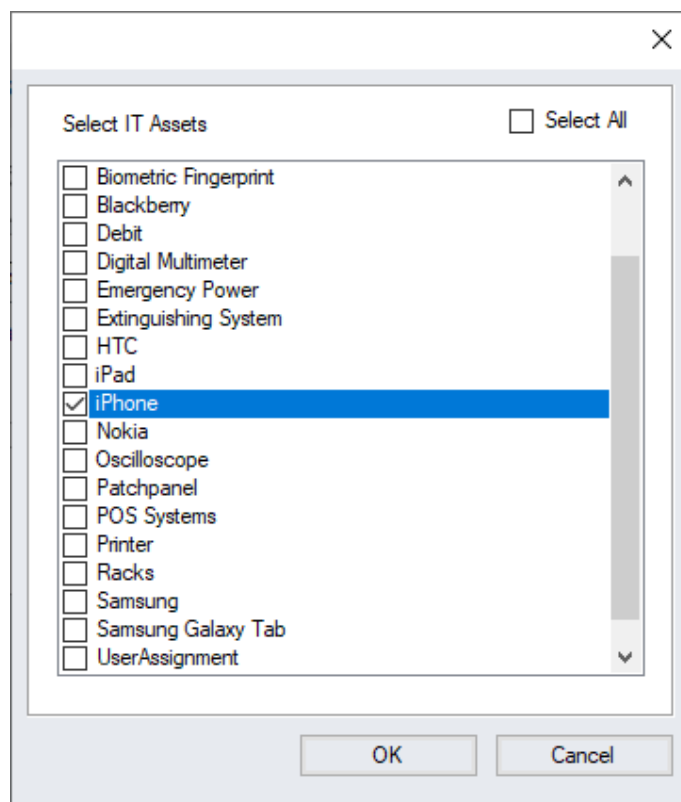


Figure 7 - Select the IT asset objects

4.2 Network map

As mentioned previously, IT Assets that contain network information can be displayed in the Network Map.

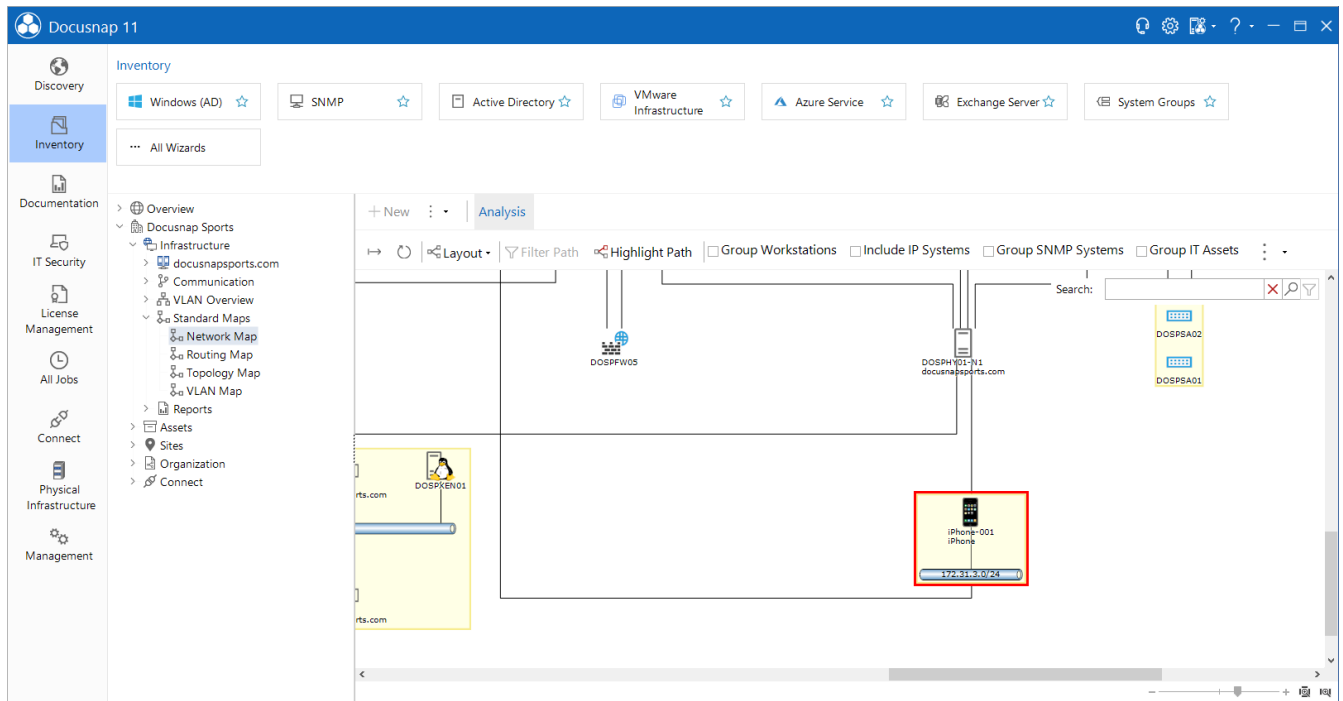


Figure 8 - IT assets in network map

5. Import of IT assets

5.1 Data source

Besides entering the information of IT Asset objects manually, Docusnap allows the import of a csv containing the necessary information.

The following list that includes two Apple iPhones is to be imported as IT Asset objects into Docusnap for demonstrational purposes.

Model	Modelcode	Serialnumber	Name	Memory	Display	WLAN
iPhone X	A1902	234567891	iPhone-002	256 GB	5,8	192.168.100.8#255.255.255.0#22-33-44-55-66-77
iPhone 11 Pro	A2104	345678912	iPhone-003	256 GB	6,1	192.168.100.9#255.255.255.0#33-44-55-66-77-88

Figure 9 - Data for the import in csv

5.2 WI-Fi address

A special format is required for the import of a mobile phones Wi-Fi address:

IP Address	Subnet mask	Mac Address
192.168.100.8	255.255.255.0	22-33-44-55-66-77

The existing data needs to be merged into a Wi-Fi address format:

192.168.100.8#255.255.255.0#22-33-44-55-66-77

It is also possible to provide the mac address using colons: 11:22:33:44:55:66.

5.3 Import wizard

By opening the CSV Import (All Jobs – All Wizards – CSV Import) dialogue, the desired target sections are defined. There are three sections available: Tables, IT Assets, Extensions.

For our example we chose IT Assets and select in the dropdown panel iPhone.

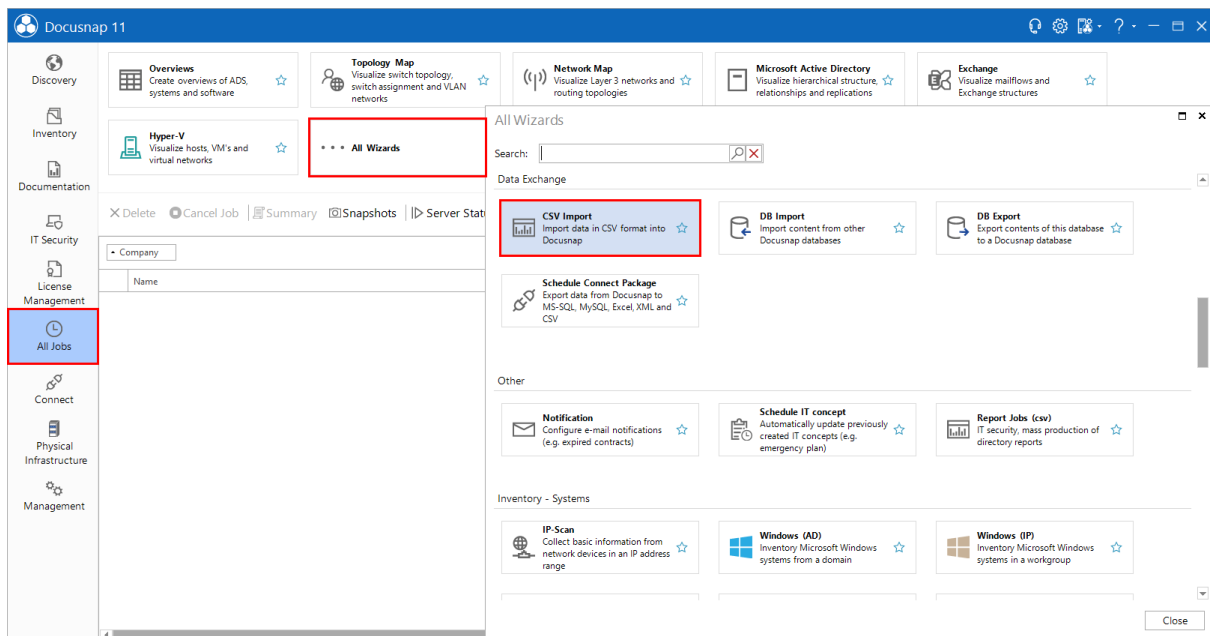


Figure 10 - CSV Import wizard

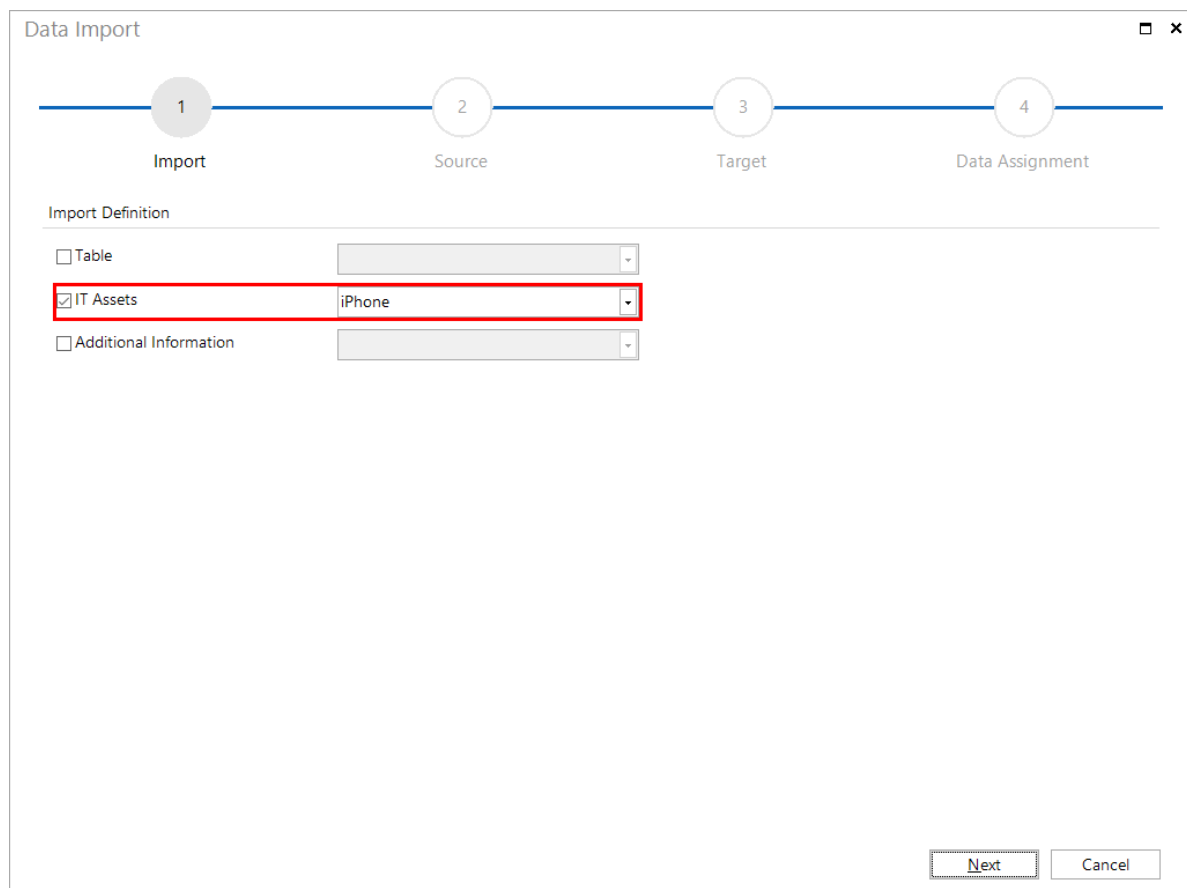


Figure 11 - Import definition

The relating csv-file containing the data to import needs to be selected in the section Source. As in our sample file the first line describes the information, the checkbox **First Row as Header** is activated.

1

2

3

4

ImportSourceTargetData Assignment

Select File

File C:\Docusnap\Sonstiges\iPhone.csv

Delimiter

☐ TabStop☐ Space☐ Comma☒ Semicolon☐ Other:

Options

Text Qualifier: " ☒ First Row as Header

Preview

Model	Modelcode	Serialnumber	Name	Memory	Display	WLAN	
iPhone X	A1902	234567891	iPhone-002	256 GB	5,8	192.168.100.8#255.255.255.0#22-33-44-55-66-77	
iPhone 11 Pro	A2104	345678912	iPhone-003	256 GB	6,1	192.168.100.9#255.255.255.0#33-44-55-66-77-88	

BackNextCancel

Figure 12 - Select csv source

The target for the data import needs to be identified.

Data Import □ ×

1 2 3 4

Import Source **Target** Data Assignment

Target

- Inventory
 - Docusnap Sports
 - Assets
 - Other Assets
 - Mobile Phones**

Back Next Cancel

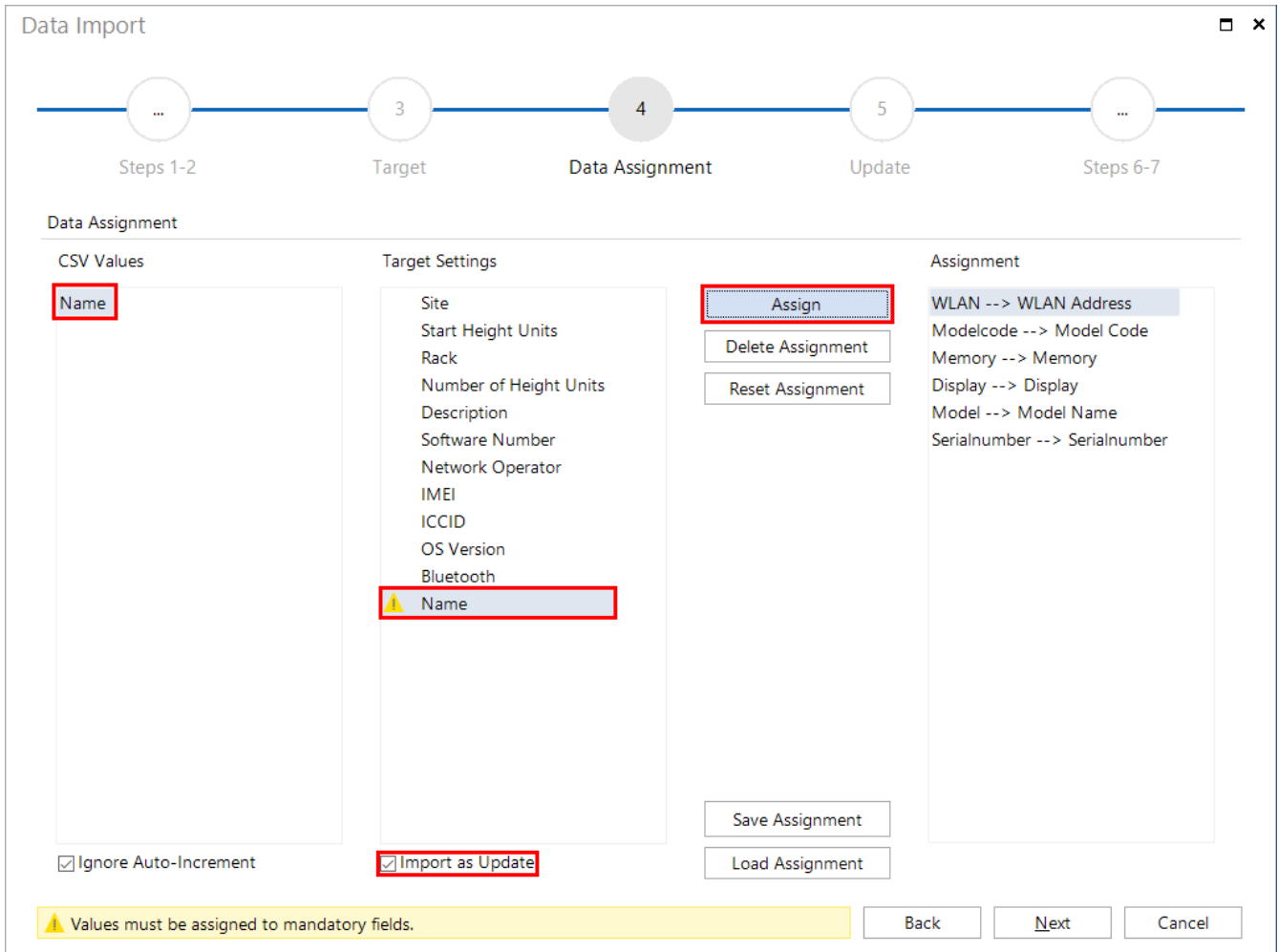
Figure 13 - Select target

5.4 Data assignment

The csv-values need to be assigned to the relating fields in the database in the section **Data Assignment**.

For this purpose, each csv value is to be selected as well as the Target Setting and confirmed by clicking **Assign**. Fields with a yellow triangle and an exclamation mark inside are compulsory to be selected, the other fields are optional.

Are existing objects to be updated in Docusnap, **Import as Update** is to be selected. If this option is not active, all objects are added again and will be duplicated in the database!



Data Import

Steps 1-2 Target **Data Assignment** Update Steps 6-7

Data Assignment

CSV Values	Target Settings	Assignment
Name	Site	WLAN --> WLAN Address
	Start Height Units	Modelcode --> Model Code
	Rack	Memory --> Memory
	Number of Height Units	Display --> Display
	Description	Model --> Model Name
	Software Number	Serialnumber --> Serialnumber
	Network Operator	
	IMEI	
	ICCID	
	OS Version	
	Bluetooth	
	Name	

☒ Ignore Auto-Increment ☒ **Import as Update**

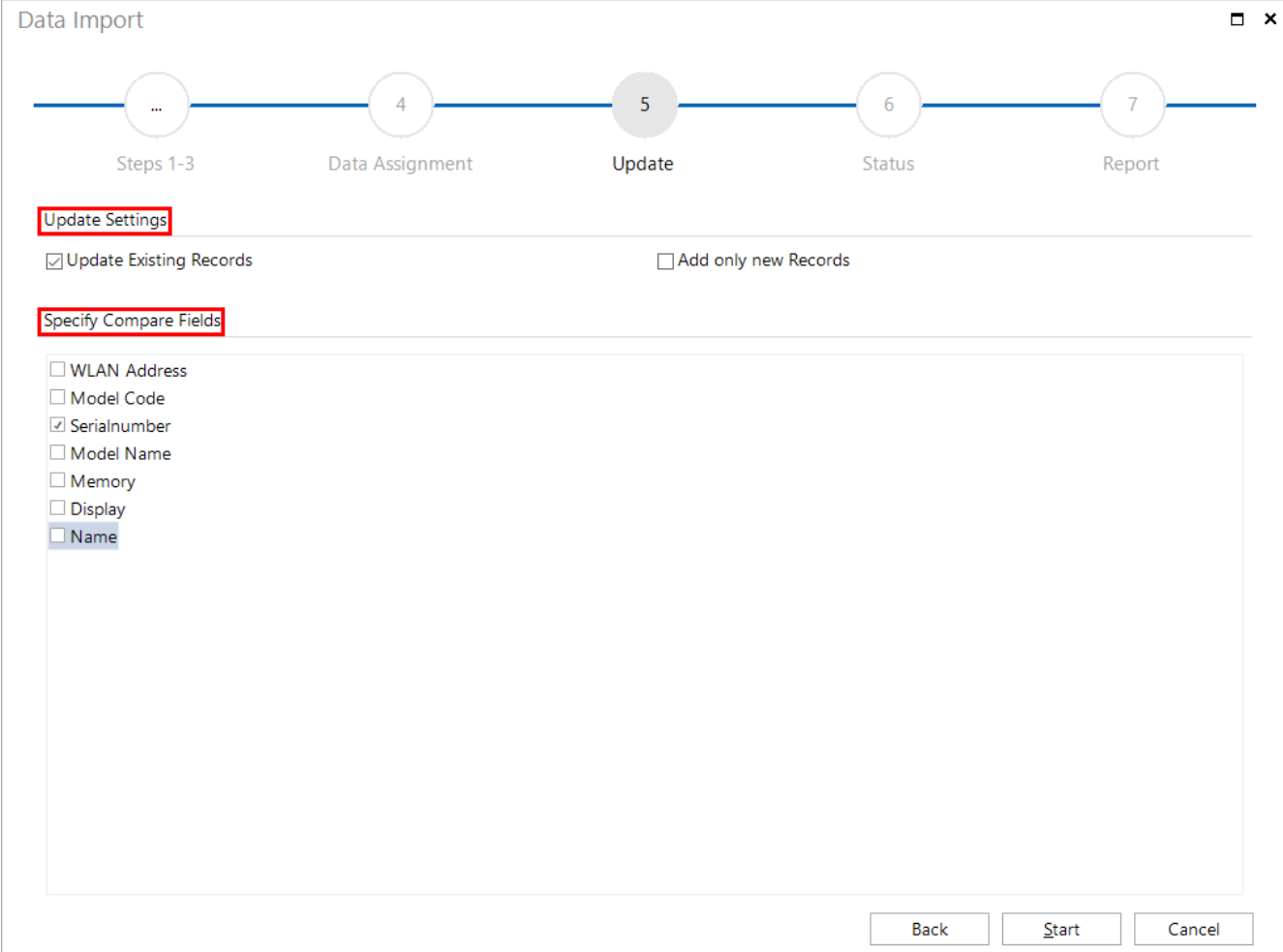
Assign Delete Assignment Reset Assignment Save Assignment Load Assignment

⚠ Values must be assigned to mandatory fields.

Back Next Cancel

Figure 14 - Data assignment

In the case of the import being done as an update, the Import Wizard will contain an additional section *Update*.



Data Import

Steps 1-3 Data Assignment **Update** Status Report

Update Settings

☒ Update Existing Records ☐ Add only new Records

Specify Compare Fields

☐ WLAN Address
☐ Model Code
☒ SerialNumber
☐ Model Name
☐ Memory
☐ Display
☐ Name

Back Start Cancel

Figure 15 - Specify compare fields

The next step addresses the Compare Fields for the import. The selected values of the attributes will be double-checked on existing information and in the case of different values updated accordingly. If there is no data yet, it will be added.

Compare Field values require to be uniquely identifiable – such as the serial number of a device or the phone number!

After all fields have been assigned, the import begins by clicking on **Start**.

The next step will import the assigned values from the csv values to the relating Target Fields.

The status of the Data Import will be summarized in the **Report**.

Data Import

...

4

5

6

7

Steps 1-3

Data Assignment

Update

Status

Report

Report

Report

✓ 2 of 2 data rows imported successfully.

✗ 0 of 2 data rows have failed.

+ 2 of 2 data rows were newly added.

Close

Figure 16 – Report csv import

5.5 Result

The iPhones previously imported from the CSV file are now IT asset objects in the Docusnap database.

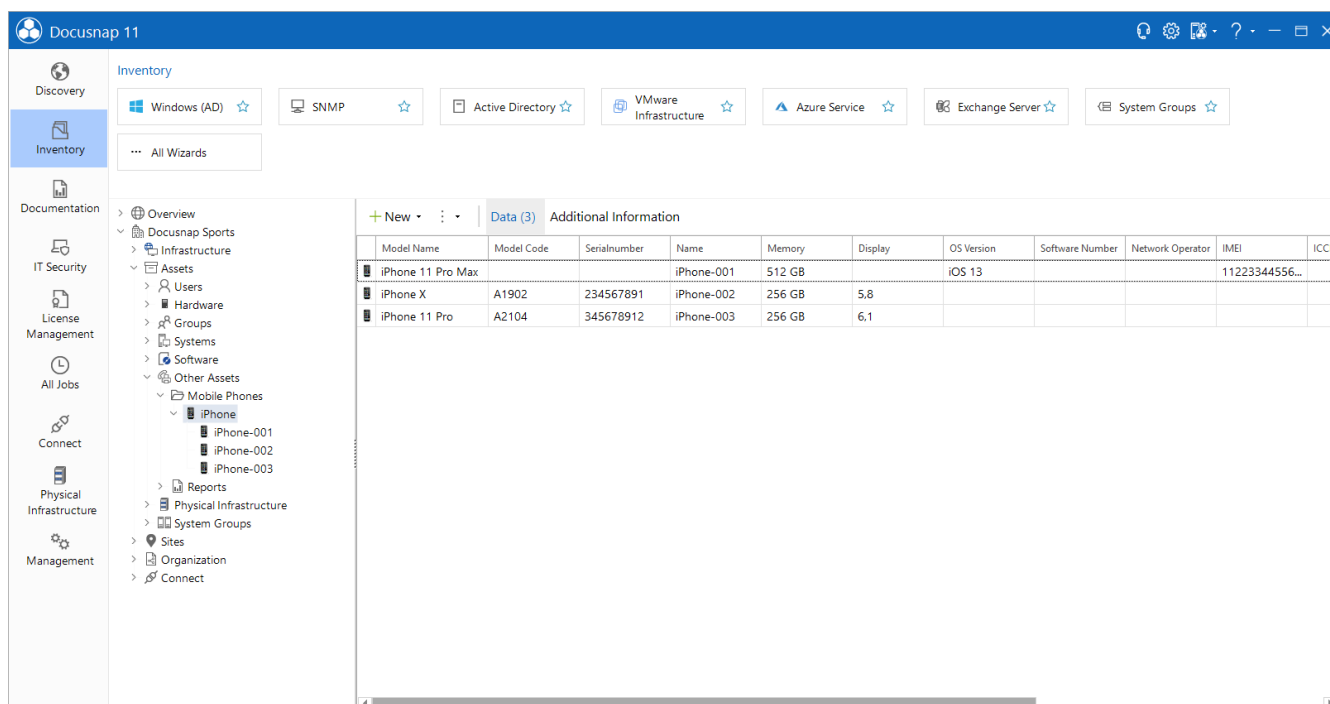


Figure 17 - Import result

Further information on the data import function can be found in the How-To "Docusnap X - CSV Import, Docusnap Connect".

6. Basic principles of custom IT asset

6.1 Management

The IT Asset classes can be managed in the Docusnap Administration.

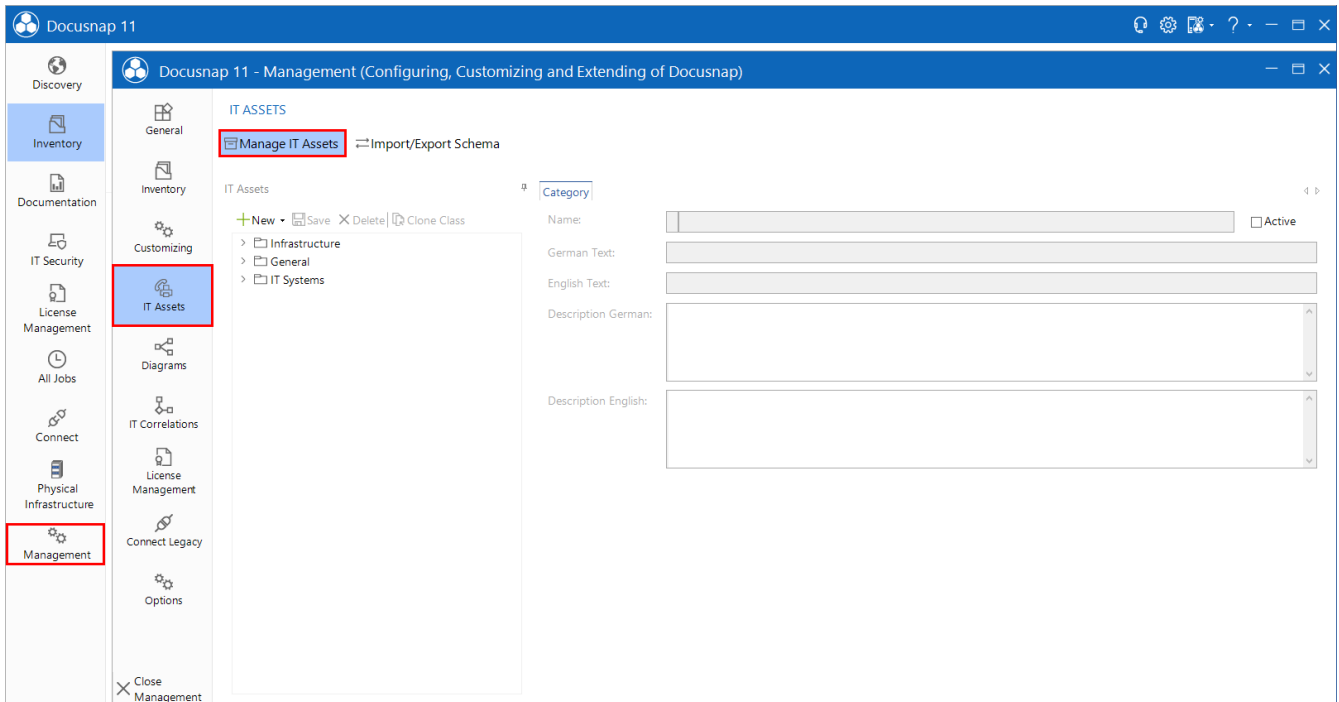


Figure 18 - Manage IT Assets

6.2 Structure

6.2.1 Category / subcategory

The IT Assets can be structured into categories and subcategories. Existing classes may be used, or new ones can be created.

6.2.2 Classes

Within the categories IT Asset classes can be created – these classes represent the actual IT Asset.

6.2.3 Tab / section

Besides the tab “General”, additional tabs can be created to separate the information more granular. Sections are used to group the attributes of the IT Asset and the column formats assort these in the Editor Section.

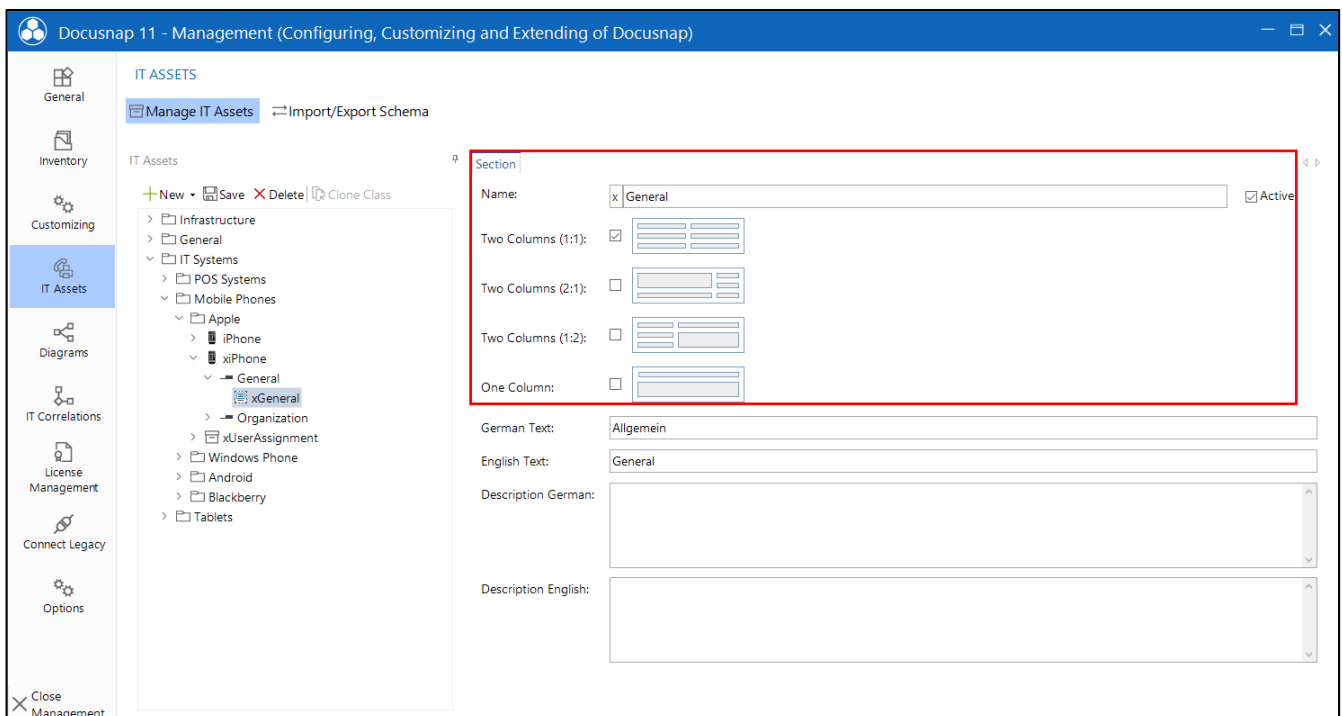


Figure 19 - Sections

A new tab and section are by default part of a newly created IT Asset.

6.2.4 Properties of IT assets

The values of IT Assets are defined in the properties of an IT Asset which can be created within a section. The following attributes for an IT Asset can be selected with Docusnap:

6.2.4.1 Date

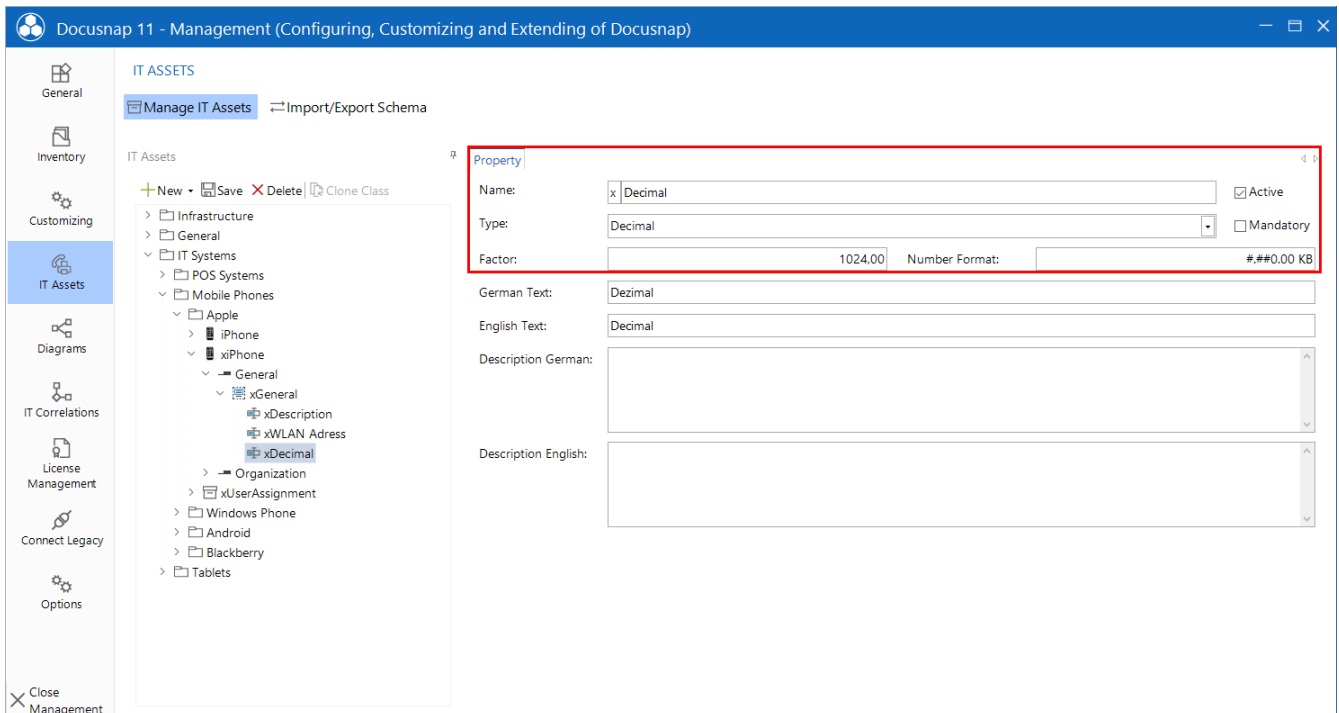
The Editor Section of Docusnap will offer a date selection if the type Date is selected as a property.

6.2.4.2 Decimal

Only decimal numbers can be entered in the panel if the type Decimal is selected.

Additionally, a factor may be entered for the conversion of numerical values – a factor of 1024 for example will convert bytes to kilobytes.

Number formats may be required as well – valid placeholders are the #-sign for arbitrary numerical values and 0 for numerical values which must be entered with a leading zero if they are too small.



The screenshot shows the 'Docusnap 11 - Management (Configuring, Customizing and Extending of Docusnap)' window. On the left is a navigation pane with categories like General, Inventory, Customizing, IT Assets, Diagrams, IT Correlations, License Management, Connect Legacy, and Options. The 'IT Assets' category is selected, and the 'Manage IT Assets' tab is active. The main area displays a tree view of IT Assets, with 'xDecimal' selected under 'Mobile Phones' > 'iPhone' > 'General' > 'xGeneral'. The 'Property' panel on the right is highlighted with a red box and contains the following fields:

- Name:** x Decimal
- Type:** Decimal
- Factor:** 1024.00
- Number Format:** ###0.00 KB
- Active:** ☒
- Mandatory:** ☐
- German Text:** Dezimal
- English Text:** Decimal
- Description German:** (empty text area)
- Description English:** (empty text area)

Figure 20 - Properties decimal

6.2.4.3 List

A dropdown table will be added to the input mask if List is selected. The values of the list can be defined via manually created entries or using a list reference, the latter using the table of a database as source. The table is to be referenced by entering the *Table-Name* and the link to the column results from the entered name.

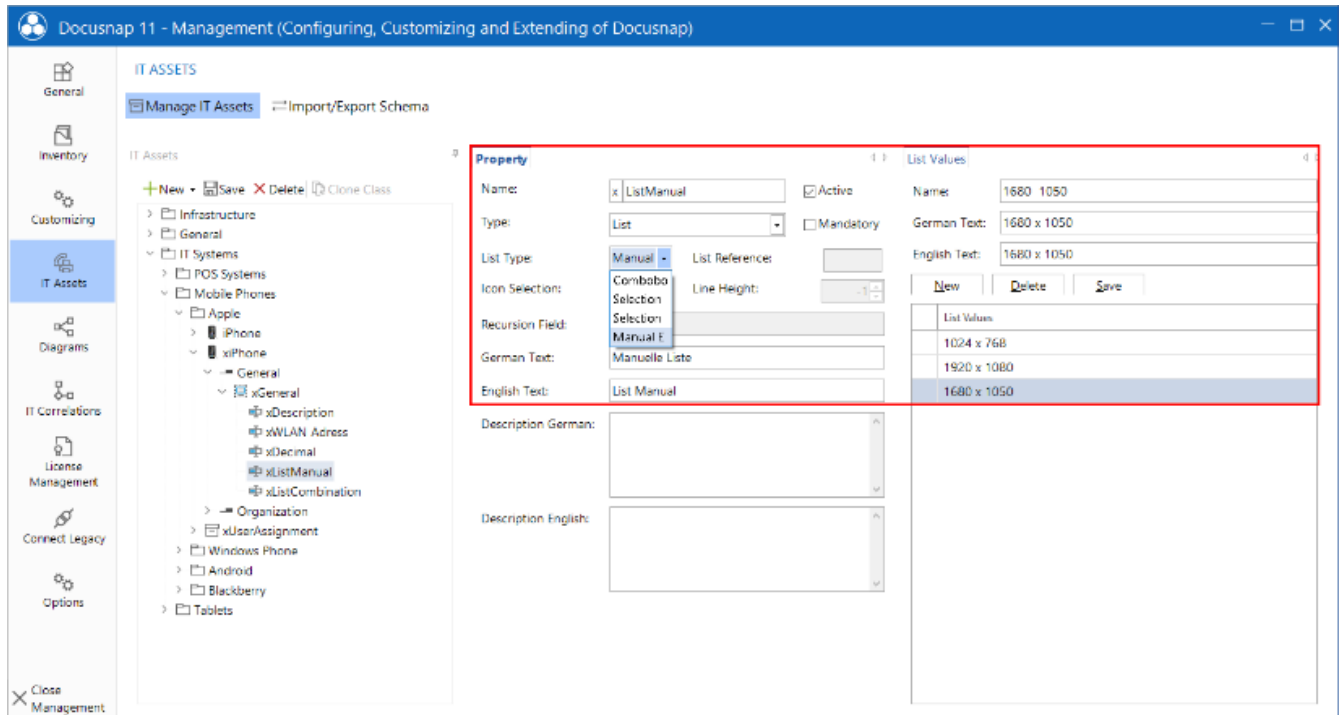


Figure 21 - Create list values

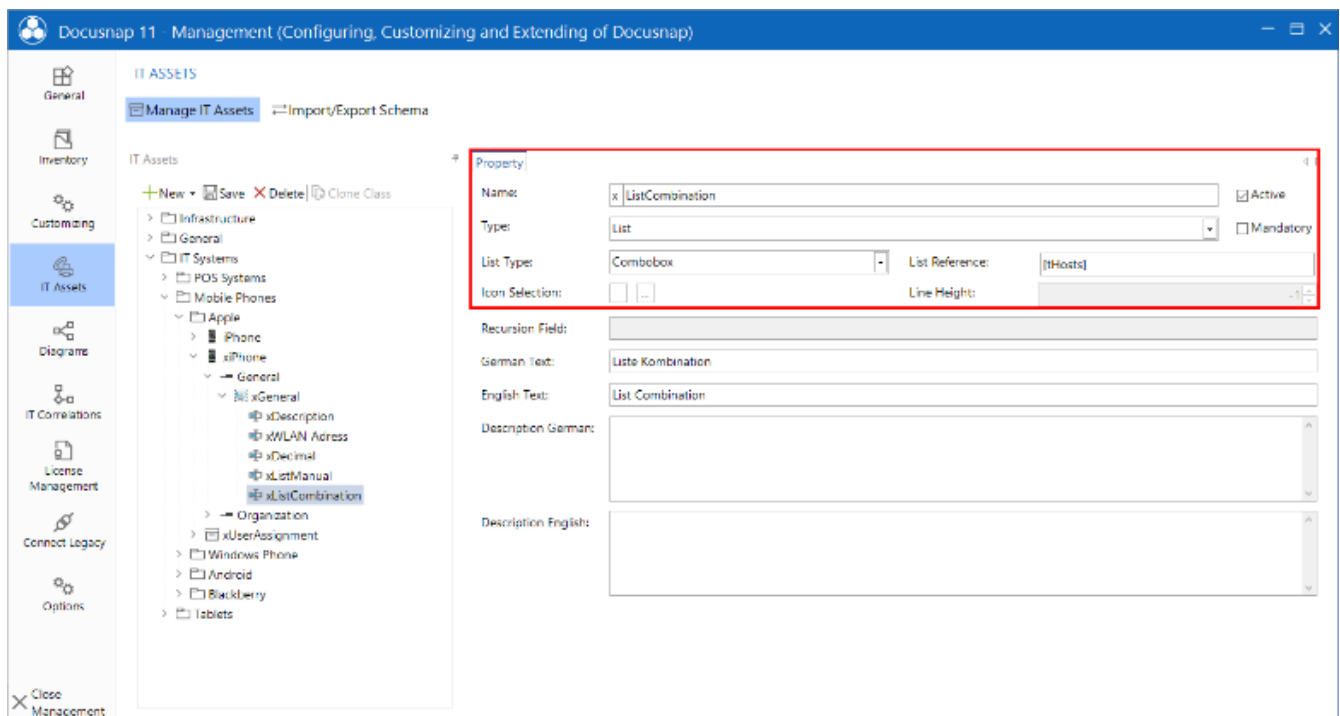


Figure 22 - Create list reference

6.2.4.4 Yes / no

For the property with the type Ye/No a check box will be displayed in the Editor Section.

6.2.4.5 Multi-line text

If the type Multi-line Text is selected, text may be entered without a length limitation.

6.2.4.6 Network information

If Network Information is selected, the IP address, the subnet mask the the mac address may be defined. Additionally, this information will be part of the Network Map.

6.2.4.7 Text

A text panel is shown in the Editor Section if the selected type is Text.

6.2.4.8 Number

Only integral numbers may be entered in the text panel if the type Number is selected. Additionally, a factor can be defined for the conversion of numerical values.

Number format: following standard conventions numerical values can be defined including a unit definition. Again, valid placeholders are the #-sign for arbitrary numerical values and 0 for numerical values which must be entered with a leading zero if they are too small.

6.2.4.9 ADS assignment

It's possible to assign users or groups of the ADS inventory to the created IT Assets using the type ADS Assignment.

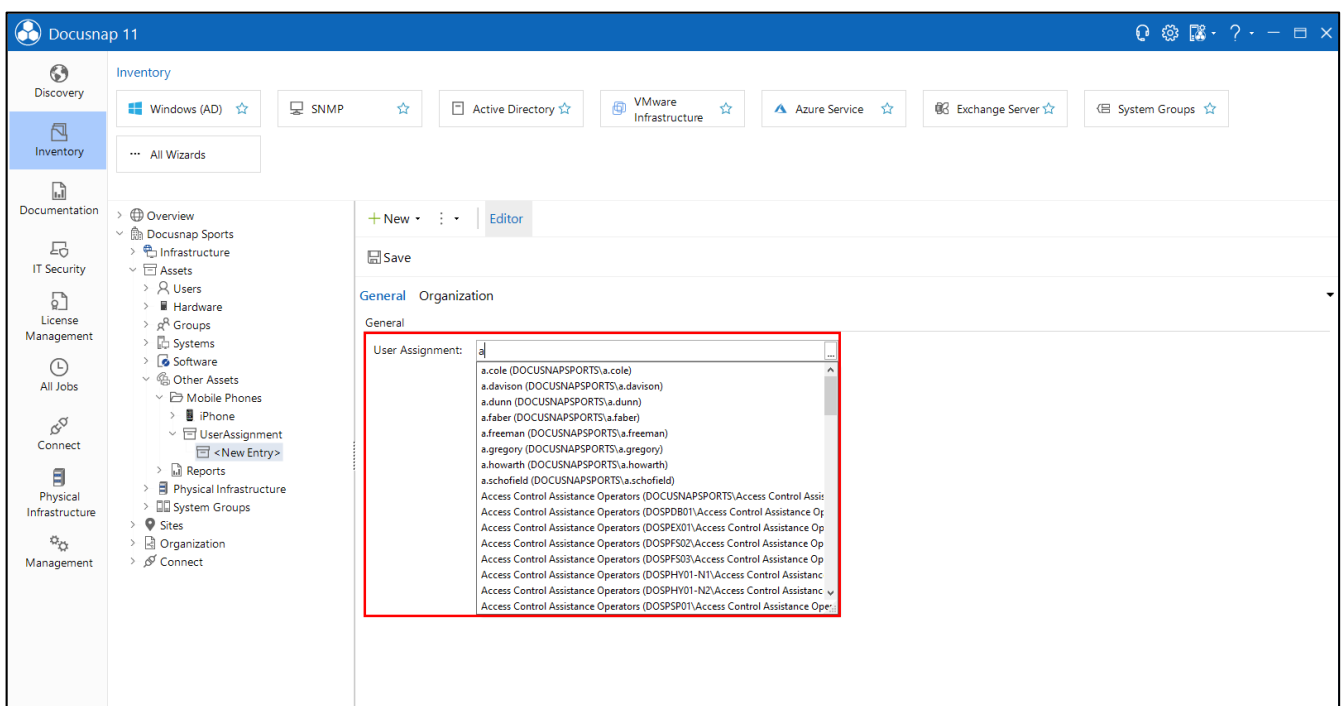


Figure 23 - User/Group Selection

6.2.4.10 Number server

The Number Server can be applied for continuous numbers in the creation of IT Assets – if Number Server is selected as type, a Number Server may be selected.

Further information on creating and managing a Number Server can be found in the Configuration Manual.

6.2.4.11 Further information on the structure of IT assets

A more detailed description of the structure and various properties of IT assets can also be found in the configuration manual.

7. Creating custom IT asset classes

7.1 Creating an IT asset

The IT Asset is to be created in the Docusnap Administration in *IT Assets – Manage IT Assets*. Firstly a new category is to be created using *New – Category/Subcategory* and additionally entering a name as well as an English and German text.

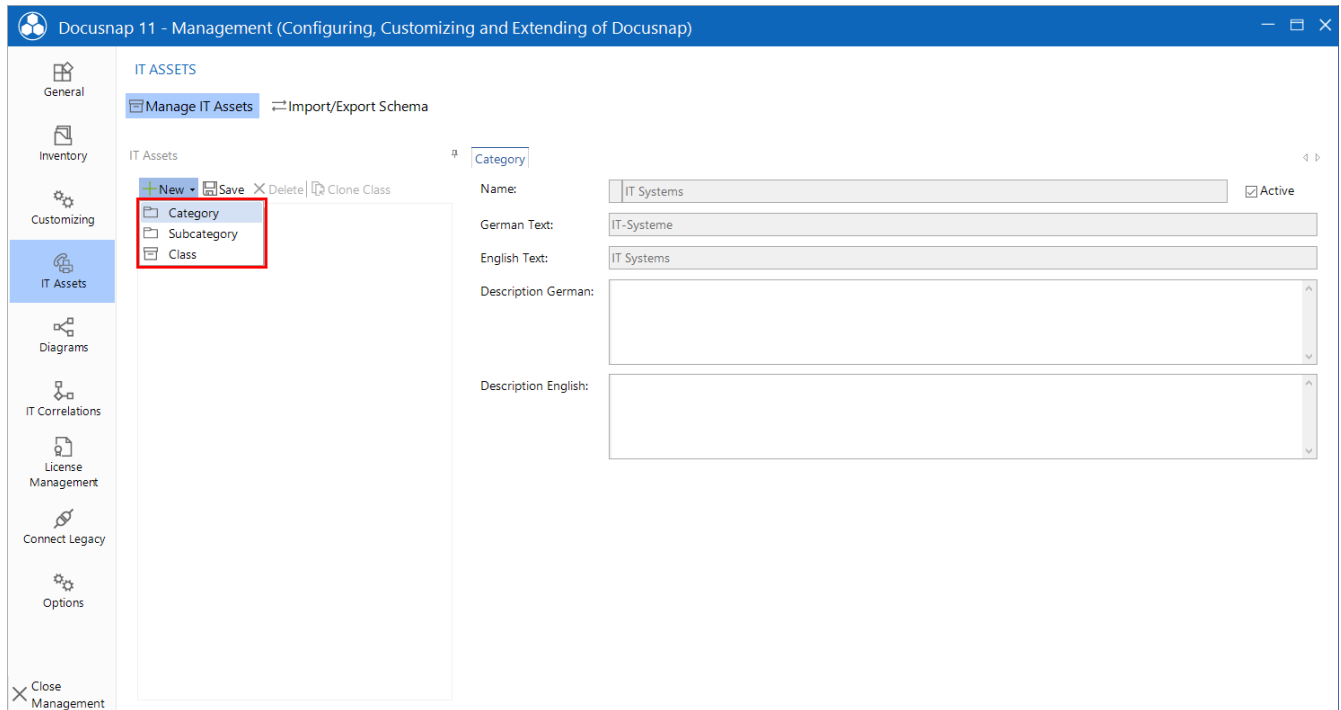


Figure 24 - Creating a category, subcategory, or class

Docusnap will automatically place an x in front of the IT Asset's name, clearly designating an IT Asset created by a user.

In the next step, the class of the actual IT Asset is created by clicking on **New – Class**. Again, a name as well as an English and German text will be required. After defining the properties of an IT Asset, it is recommended to select a Display Field that identifies the relating system in the data tree of Docusnap.

Furthermore, an adequate icon for the IT Asset may be selected in the *.png format that also appears in the Network Map.

The icon should have a size of 100 x 100 pixels and the preview icon 16 x 16 pixel.

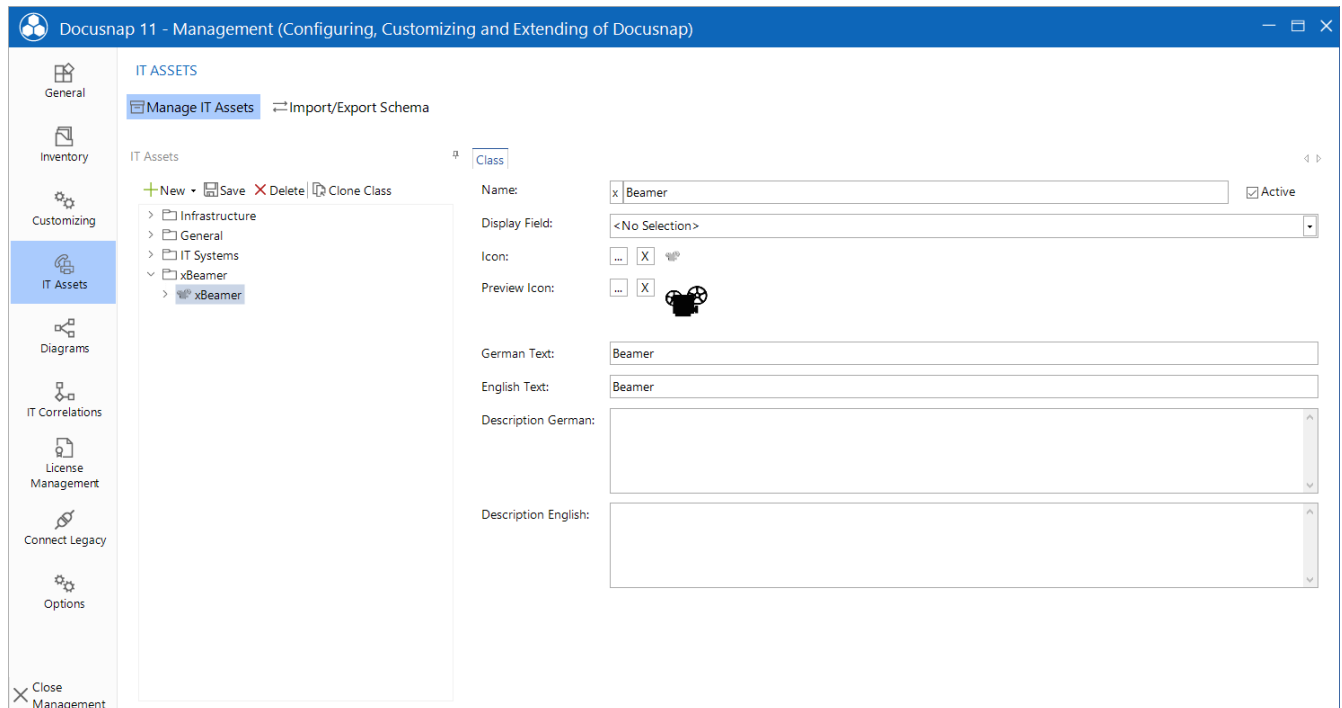


Figure 25 - Create IT asset class "Beamer"

7.2 Setting up properties

In the next step, properties will be created by switching to the created section and selecting *New – Property*. A description of all available properties can be found under 5.2.4.

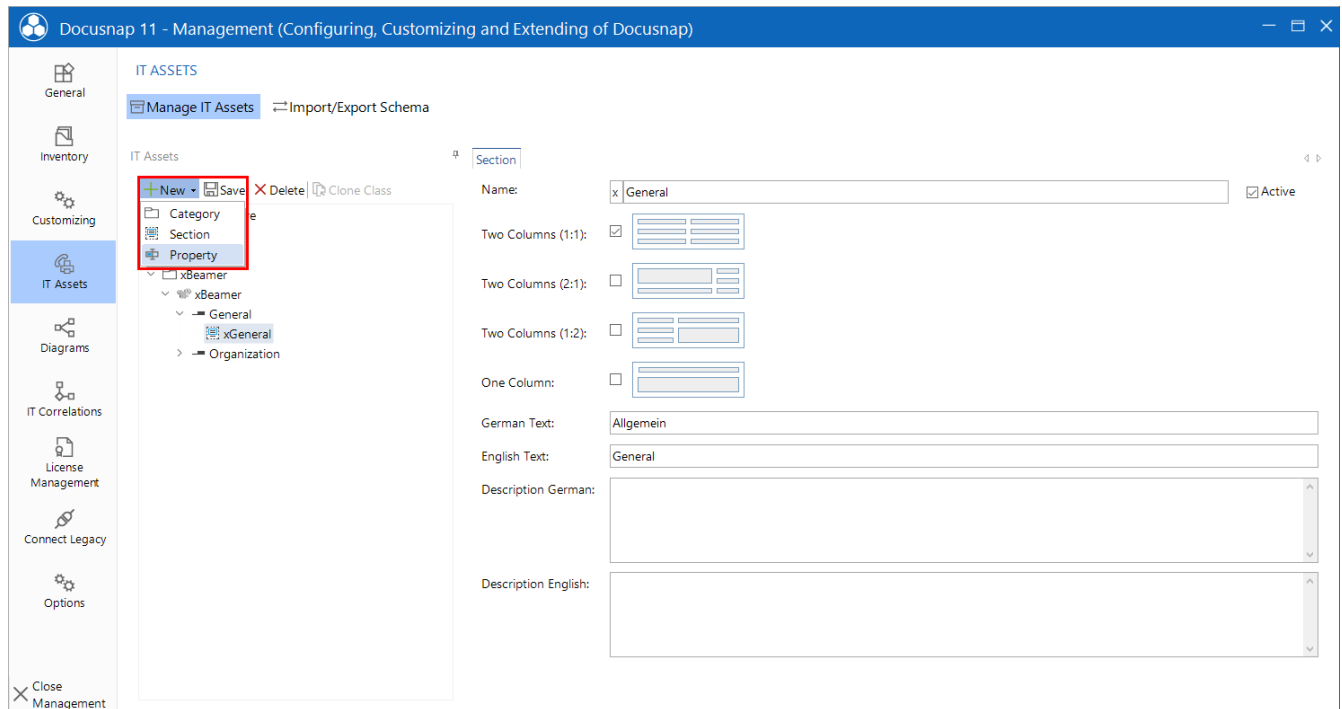


Figure 26 - Setting up properties

Properties of IT Assets will also require a name, type, and an English and German text.

In our example, the following properties are added:

Name	Typ
Name	Text
Manufacturer / Model	Text
Serial Number	Text
Resolution	List / List Entries

7.2.1 Cloning class

An existing IT Asset, no matter if custom or pre-defined, may be cloned. Cloning will include all attributes that are already existing, simplifying the creation of various smartphones or tablets for example.

These classes can be cloned using the administrative UI of IT Assets by selecting the designated class to clone and consecutively selecting *Clone Classes*.

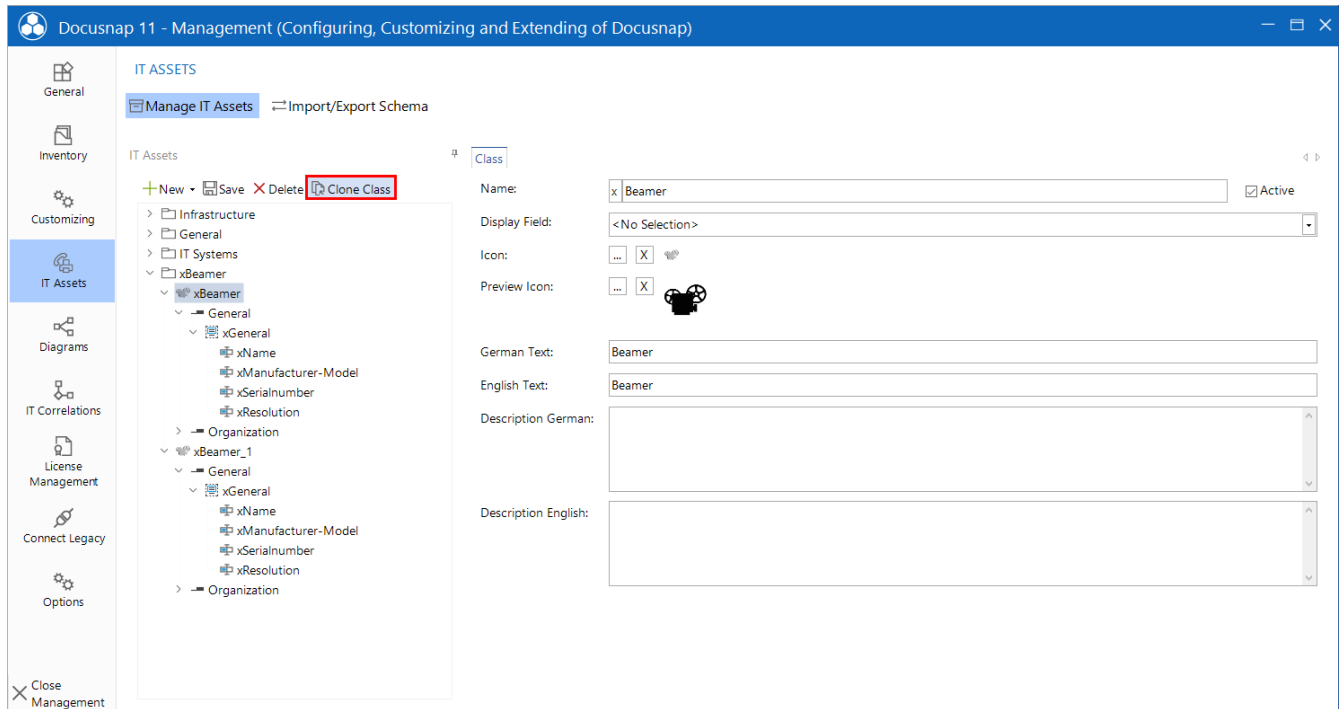


Figure 27 - Clone class

7.3 Defining a display field

After all the attributes have been created, a Display Field can be specified.

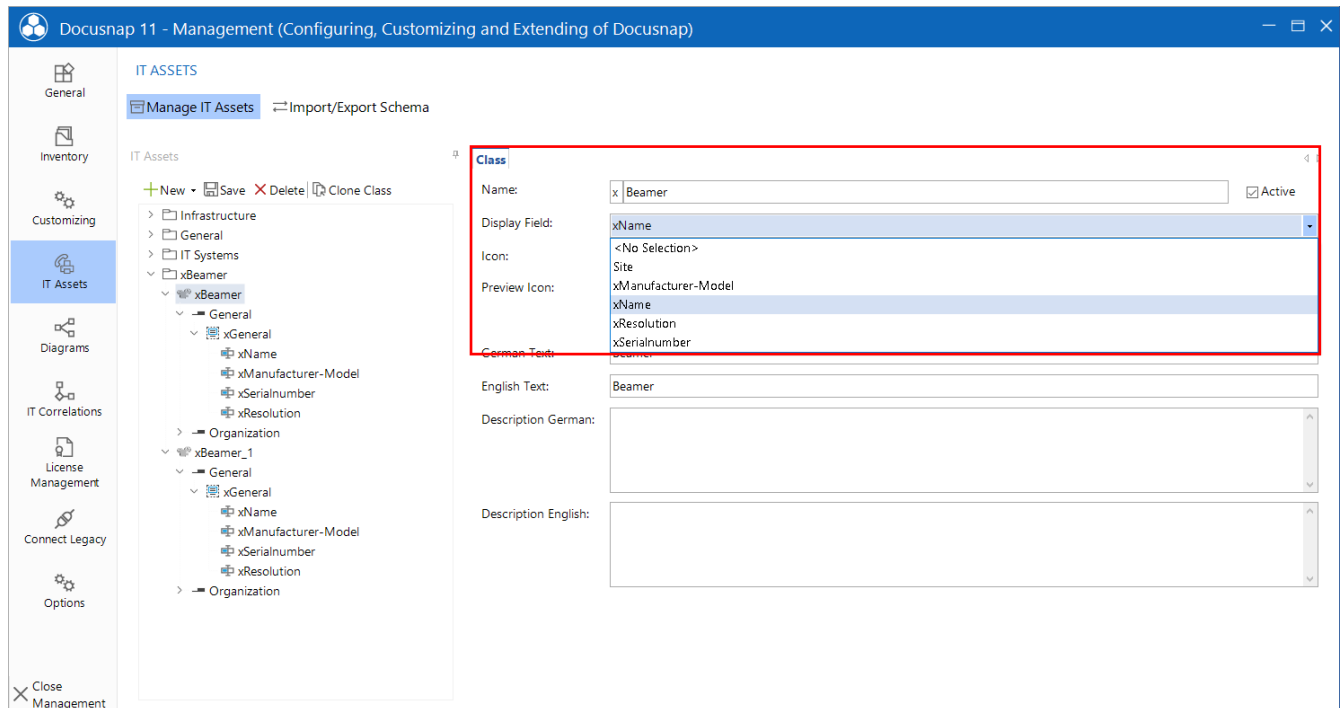


Figure 28 - Defining a display field

8. Import / export scheme

Manually created IT Asset structures can be exported and imported, enabling for example the transfer from a stage to a productive environment.

Both the import and export functionality can be found in the administrative interface of IT Assets by selecting **Import/Export Schema**.

In the tab **Import Definitions**, a file name may be selected in the text field, containing the designated IT Assets to import.

Every category and class by default will have a unique ID upon its creation. In the case of a category or class already existing while importing, the checkbox *Overwrite Existing Data* can be selected while also a postfix may be defined that will be attached to the existing name of the category or class using a **_**.

In the section below the IT Assets are selected that are to be imported after clicking on **Import**.

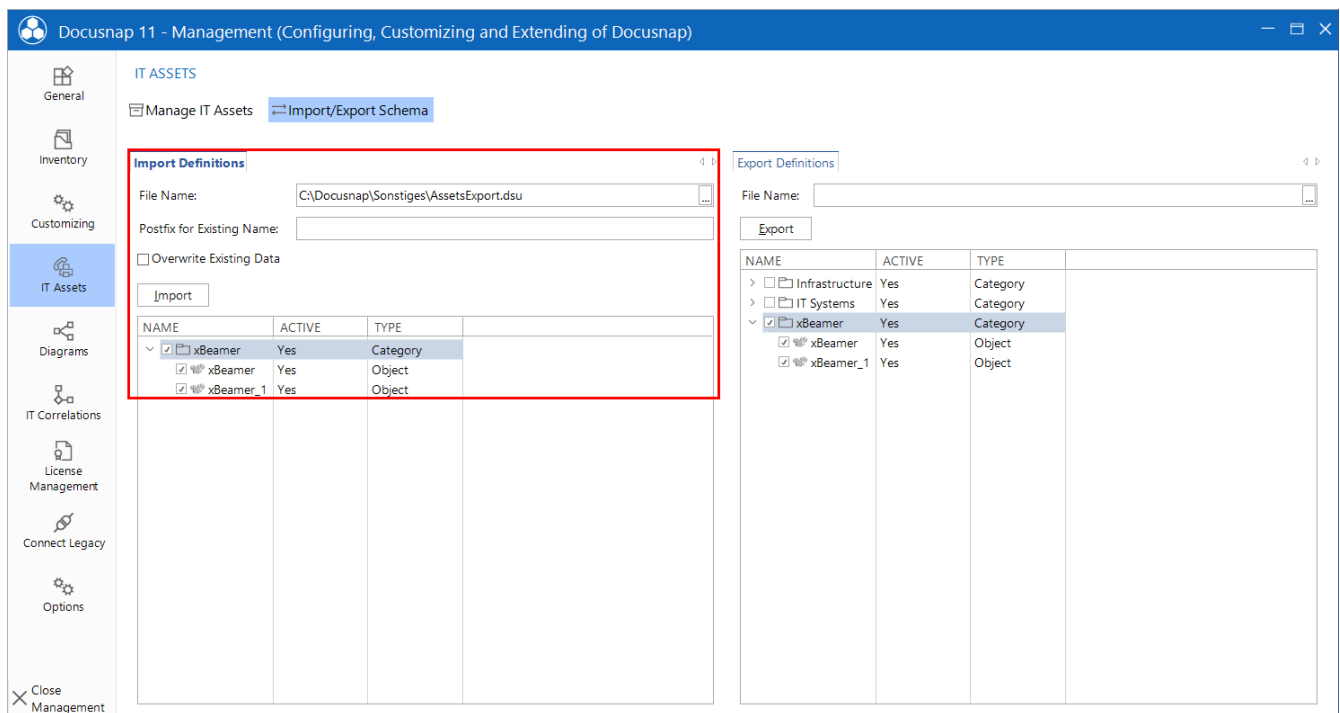


Figure 29 - Schema import

In the Export Definitions section of the IT Asset Management a file can be selected that will contain the exported data. The IT Asset structures of the database are listed below. By clicking on Export all selected categories and classes will be exported.

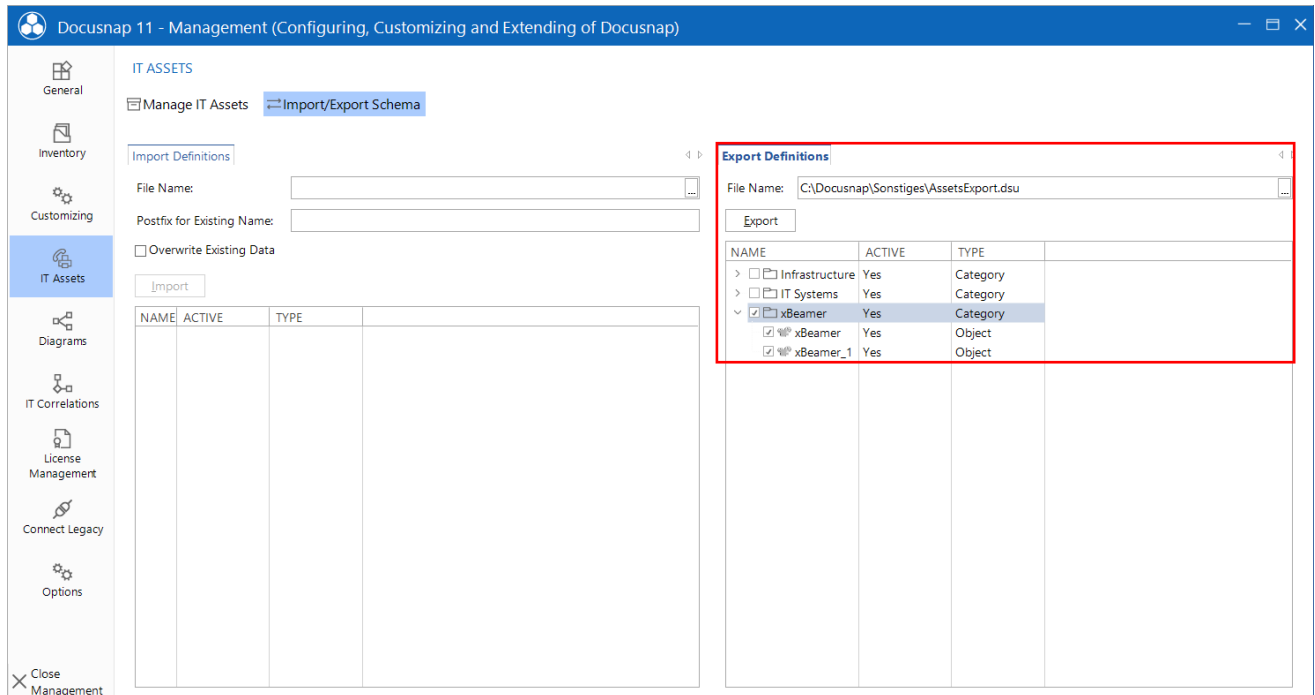


Figure 30 - Schema export

LIST OF FIGURES

FIGURE 1 - IT ASSETS IN DOCUSNAP	6
FIGURE 2 - CREATE DIRECTORY	7
FIGURE 3 - CREATE AN IT ASSET OBJECT	7
FIGURE 4 - DATA INPUT OF THE IT ASSET	8
FIGURE 5 - SELECT THE IT ASSET CATEGORY	9
FIGURE 6 - REPORT OUTPUT	9
FIGURE 7 - SELECT THE IT ASSET OBJECTS	10
FIGURE 8 - IT ASSETS IN NETWORK MAP	11
FIGURE 9 - DATA FOR THE IMPORT IN CSV	12
FIGURE 10 - CSV IMPORT WIZARD	13
FIGURE 11 - IMPORT DEFINITION	13
FIGURE 12 - SELECT CSV SOURCE	14
FIGURE 13 - SELECT TARGET	15
FIGURE 14 - DATA ASSIGNMENT	16
FIGURE 15 - SPECIFY COMPARE FIELDS	17
FIGURE 16 - REPORT CSV IMPORT	18
FIGURE 17 - IMPORT RESULT	19
FIGURE 18 - MANAGE IT ASSETS	20
FIGURE 19 - SECTIONS	21
FIGURE 20 - PROPERTIES DECIMAL	22
FIGURE 21 - CREATE LIST VALUES	23
FIGURE 22 - CREATE LIST REFERENCE	23
FIGURE 23 - USER/GROUP SELECTION	24
FIGURE 24 - CREATING A CATEGORY, SUBCATEGORY, OR CLASS	26
FIGURE 25 - CREATE IT ASSET CLASS "BEAMER"	27
FIGURE 26 - SETTING UP PROPERTIES	28
FIGURE 27 - CLONE CLASS	29
FIGURE 28 - DEFINING A DISPLAY FIELD	30
FIGURE 29 - SCHEMA IMPORT	31
FIGURE 30 - SCHEMA EXPORT	32

VERSION HISTORY

Date	Description
November 24, 2016	Version 1.0 – HowTo Created
October 24, 2018	Version 1.1 – Screenshots adapted
April 28, 2020	Version 2.0 - Revision of the HowTos for Docusnap 11
