



Location Assignment of Systems

The different possibilities of location assignment

TITLE Location Assignment of Systems
AUTHOR Docusnap Consulting
DATE 8/23/2021
VERSION 1.0 | valid from 8/12/2021

This document contains proprietary information and may not be reproduced in any form or parts whatsoever, nor may be used by or its contents divulged to third parties without written permission of Docusnap GmbH. All rights reserved.

CONTENTS

1. INTRODUCTION	4
2. PREREQUISITES	5
3. SITE ALLOCATION	6
3.1 ASSIGNMENT CRITERIA	7
3.2 DOCUSNAP DISCOVERY SERVICE	9
3.3 DATA EDIT	10
3.4 SYSTEM ASSIGNMENT	11
4. EXAMPLARY ANALYTICS	12

1. INTRODUCTION

This HowTo describes the possibilities of the location assignment. Site mapping is a prerequisite for creating site-specific reports such as plans (network, topology plans) or textual reports (Docusnap Connect) with a corresponding site filter. In addition, this is required to map the physical infrastructure using Docusnap. Both manual and automatic site mappings are addressed.

Locations can be assigned to the following systems.

- Workstations
- Servers
- Linux
- Mac
- SNMP
- Thin Clients
- HP-UX
- CIFS
- IP-Systems
- Other Assets

2. PREREQUISITES

Docusnap offers the possibility to map your location structure. These must be created in advance. For more information, please refer to our user manual.

[Manage Sites \(docusnap.com\)](#)

3. SITE ALLOCATION

Locations to systems can be assigned in different ways. The various options are explained in the following chapters. A distinction is made between automatic (assignment criteria and DDS) and manual (input mask and system assignment).

Please note that automatic assignments are only applied if the systems have not yet been assigned to a site.

If both an assignment criterion and a DDS have been set up for a location, the assignment of the assignment criterion takes effect.

The following section describes the various options for assigning systems to the Munich site.

3.1 ASSIGNMENT CRITERIA

Assignment criteria can be used to assign systems to specific locations. The assignment criteria can be found at the following location:

- Management – Inventory - Assignment Criteria

There, based on various criteria, you define rules that can be applied to automatically assign systems to locations.

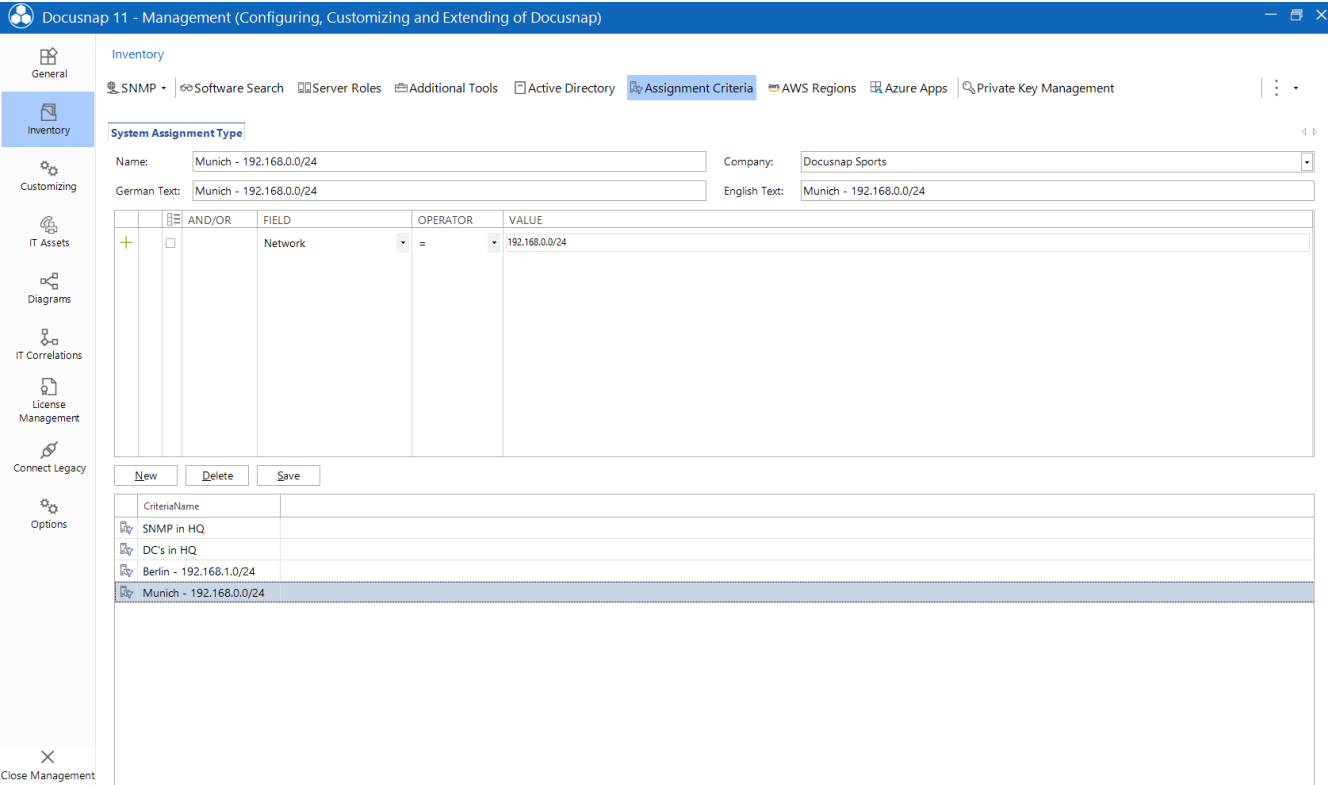
These criteria include:

- ADDS Container
- Domain
- Network
 - The networks must be specified in the CIDR notation - e.g. 192.168.0.0/24
- System name
- Length system name
- System type

After defining the rule, it must be assigned to a location. The assignment is done in the system assignment wizard:

- Inventory – All Wizards – System Assignment

A corresponding rule for the Munich location is defined in Administration under Assignment criteria.



The screenshot shows the 'Docusnap 11 - Management (Configuring, Customizing and Extending of Docusnap)' interface. The 'Inventory' section is active, and the 'Assignment Criteria' tab is selected. The 'System Assignment Type' configuration is displayed, showing the following details:

- Name:** Munich - 192.168.0.0/24
- Company:** Docusnap Sports
- German Text:** Munich - 192.168.0.0/24
- English Text:** Munich - 192.168.0.0/24

The configuration table below shows the rule definition:

	AND/OR	FIELD	OPERATOR	VALUE
<input type="checkbox"/>		Network	=	192.168.0.0/24

Below the table, there are buttons for 'New', 'Delete', and 'Save'. At the bottom, a list of criteria names is shown, with 'Munich - 192.168.0.0/24' selected and highlighted in blue.

Figure 1 - Assignment Criteria Munich

Subsequently, this must be assigned to the Munich location in the system assignment wizard.

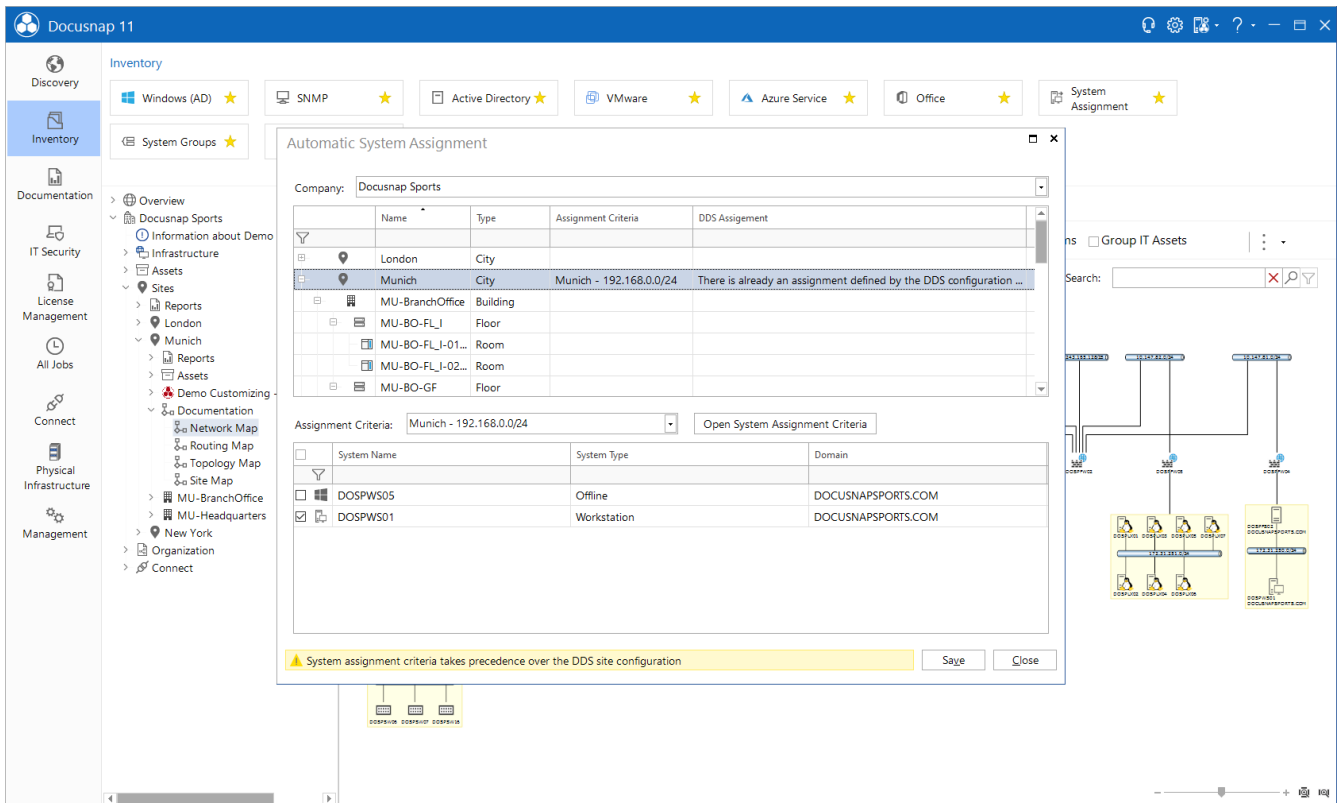


Figure 2 - System Assignment

3.2 DOCUSNAP DISCOVERY SERVICE

By using a Docusnap Discovery Service, systems can be automatically assigned to a site. For this purpose, a corresponding discovery service is configured and assigned to the site. The following figure shows that the Munich Discovery Service has been assigned to the Munich site. Thus, systems inventoried by this Discovery Service and not yet assigned to a site are now assigned to the Munich site.

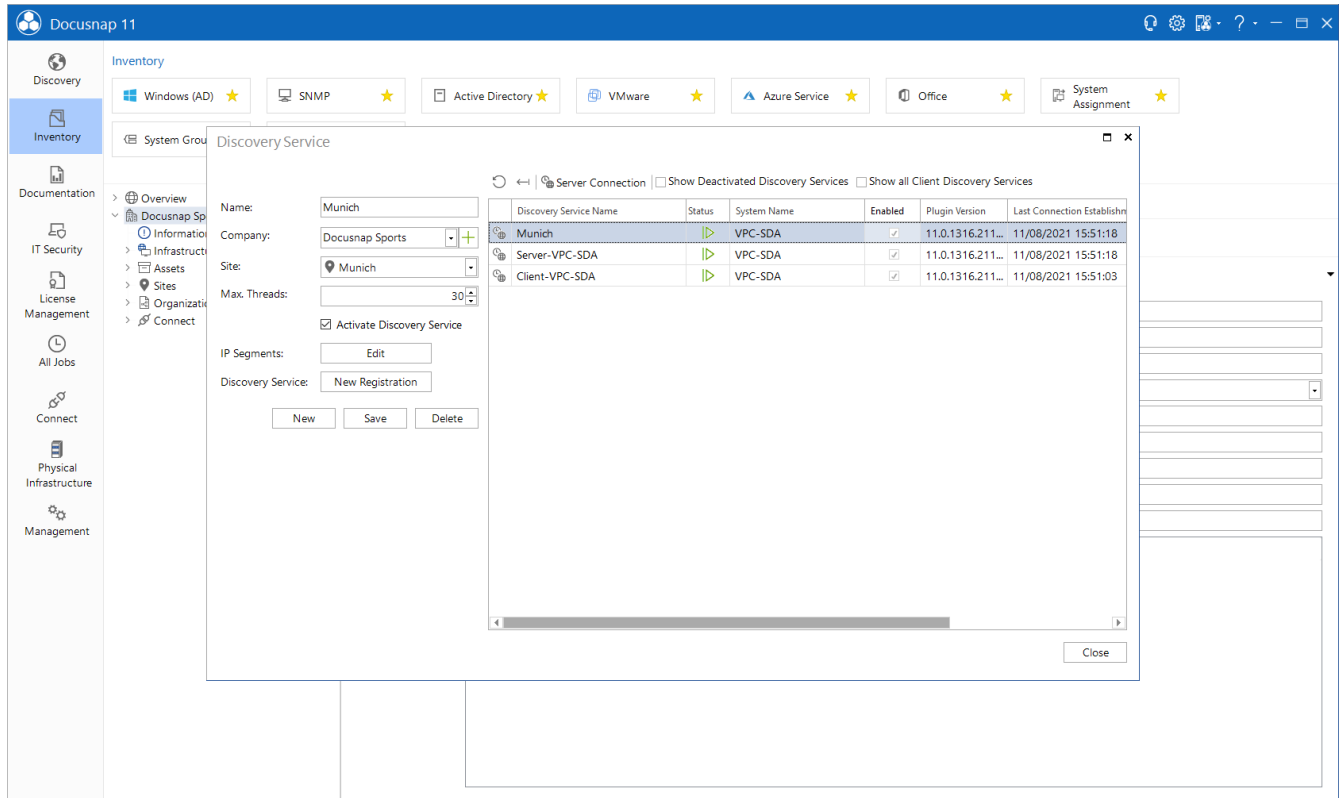


Figure 3 - Docusnap Discovery Service

3.3 DATA EDIT

Systems can be assigned to a location via the associated Data Edits. To do this, select any system and open its input mask. In the following figure you can see that the system DOSPWS01 is assigned to the location Munich.

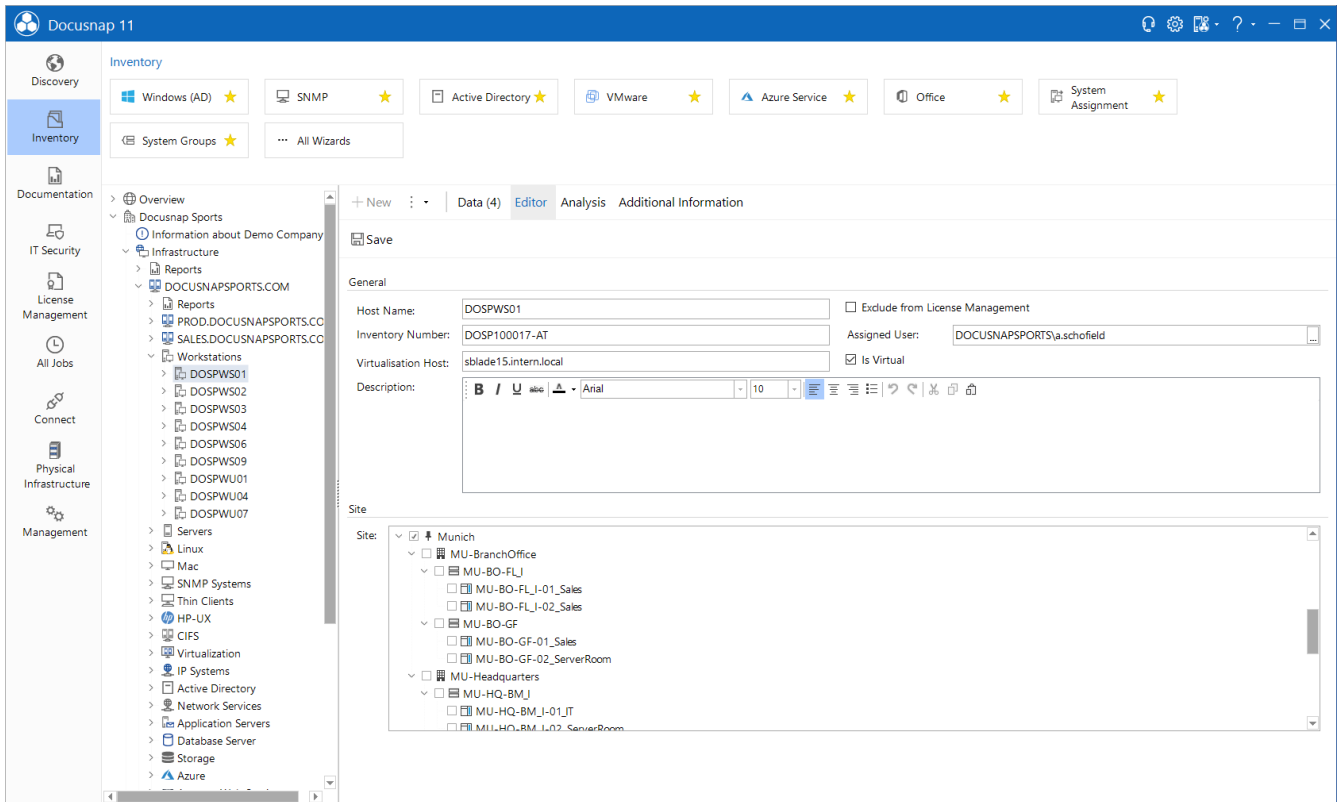


Figure 4 - Data Edit

3.4 SYSTEM ASSIGNMENT

Systems can be manually assigned to a location via the system assignment dialog. This is particularly suitable if several systems have to be assigned.

- Inventory – All Wizards – System Assignment

Please note that only systems that have not yet been assigned to a location are available for selection. All other systems are not available for selection and must first be detached from the existing location.

Automatic System Assignment
□ ×

Company: Docusnap Sports

	Name	Type	Assignment Criteria	DDS Assignment
📍	London	City		
📍	Munich	City	Munich - 192.168.0.0/24	There is already an assignment defined by the DDS configuration ...
🏢	MU-BranchOffice	Building		
🏢	MU-BO-FL_I	Floor		
🏢	MU-BO-FL_I-01...	Room		
🏢	MU-BO-FL_I-02...	Room		
🏢	MU-BO-GF	Floor		

Assignment Criteria: Munich - 192.168.0.0/24 Open System Assignment Criteria

	System Name	System Type	Domain
<input type="checkbox"/>			
<input type="checkbox"/>	DOSPWS05	Offline	DOCUSNAPSPORTS.COM
<input checked="" type="checkbox"/>	DOSPWS01	Workstation	DOCUSNAPSPORTS.COM

⚠ System assignment criteria takes precedence over the DDS site configuration

Save
Close

Figure 5 - System Assignment

4. EXAMPLARY ANALYTICS

The location assignment can subsequently be used to restrict evaluations to specific locations. This allows you to create site-specific plans (also recursively), for example.

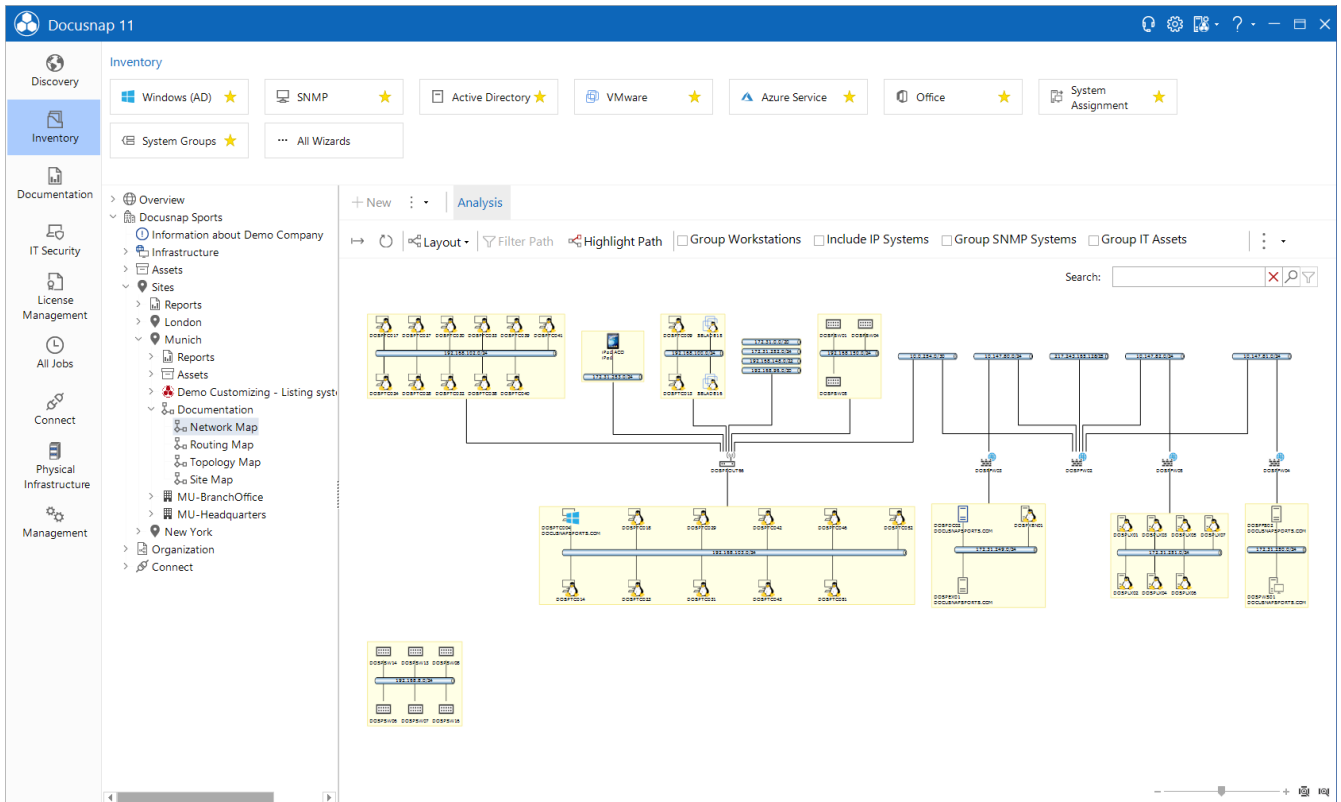


Figure 6 - Site Specific Network Map

LIST OF FIGURES

FIGURE 1 - ASSIGNMENT CRITERIA MUNICH	7
FIGURE 2 - SYSTEM ASSIGNMENT	8
FIGURE 3 - DOCUSNAP DISCOVERY SERVICE	9
FIGURE 4 - DATA EDIT	10
FIGURE 5 - SYSTEM ASSIGNMENT	11
FIGURE 6 - SITE SPECIFIC NETWORK MAP	12

Version history

Date	Description
August 12, 2021	Version 1.0 HowTo created
