



Migrating from DocuSnap 6.3 to Version X

Technical Documentation

TITLE	Migrating from DocuSnap 6.3 to Version X
AUTHOR	DocuSnap Consulting
DATE	18.12.2018
VERSION	1.2 valid from 26.09.2018

Die Weitergabe, sowie Vervielfältigung dieser Unterlage, auch von Teilen, Verwertung und Mitteilung ihres Inhaltes ist nicht gestattet, soweit nicht ausdrücklich durch die itelio GmbH zugestanden. Zuwiderhandlung verpflichtet zu Schadenersatz. Alle Rechte vorbehalten.

This document contains proprietary information and may not be reproduced in any form or parts whatsoever, nor may be used by or its contents divulged to third parties without written permission of itelio GmbH. All rights reserved.

TABLE OF CONTENTS

1. Purpose of this document	4
2. Prerequisites	4
2.1 General preparation	4
2.2 Preparations – All DocuSnap systems	4
2.3 Preparations – DocuSnap Server	4
3. Migrating from DocuSnap 6.3 to version X	5
3.1 Important notes – Migrating large DocuSnap 6.3 databases	6

1. Purpose of this document

This HowTo document describes the points to be taken into account for a successful update of the existing Docusnap 6.3 database to version X. Please also read the following HowTo documents on Docusnap X:

- Installing and Configuring
- Installing and Customizing Docusnap Web – Version 2.0
- Discovery Service – Installation and Configuration
- Additinal Information

These can be found in our knowledge base:

<https://www.docusnap.com/en/support/knowledge-base/>

2. Prerequisites

2.1 General preparation

- Microsoft SQL Server or Express 2008 or higher is mandatory
- Make a full backup of your productive Docusnap database
- Optionally: Back up the IT concept directory
- Optionally: Back up reports and customizations
- For the activation of Docusnap X, you need a DS 6.3 license key with a valid service agreement

2.2 Preparations – All Docusnap systems

- Recommended hardware: 2 processors and 4GB RAM or better
- Windows 7 / Windows Server 2008 R2 OS for Docusnap X
- Windows 8 / Windows Server 2012 or higher if you plan to install Docusnap Web
- Optionally: Install .NET 4.6.2 (the .NET update is included in the Docusnap setup)

2.3 Preparations – Docusnap Server

- For scheduled inventories, SQL Express 2008 DB or higher is required
- Docusnap Discovery Services (DDS) require an SQL Express 2008 DB or higher
- Docusnap Web too only runs with SQL Express 2008 or higher (no local DB)

3. Migrating from Docusnap 6.3 to version X

- Terminate all existing Docusnap 6.3 database connections and stop the Docusnap Server service
- Run the Docusnap X setup file appropriate for your operating system (32-bit or 64-bit version)
Download the current Docusnap X release here:
[Docusnap Software Download](#)
- Your existing Docusnap 6.3 database will be migrated to Docusnap X.
- No manual intervention is required. If you have any problems, please contact our support team:
 - E-Mail: support@docusnap.com
 - Tel: +49 (0) 8033 6978 – 4444
- After the installation, Docusnap X should start for the first time, presenting an optimized user interface. So please allow for a short learning period.
- **IMPORTANT:** Make sure that you edit existing scheduled jobs in the Job Management feature. Due to changes made to the inventory functionality, these jobs must be assigned to a Docusnap Discovery Service.

3.1 Important notes – Migrating large Docusnap 6.3 databases

- Since SQL 2008 Server, the NTEXT, TEXT, and IMAGE file types are considered as obsolete. For this reason, all data fields that used these types in Docusnap 6.3 will also be migrated to Docusnap X. This is a one-time conversion.
- In some cases, the migration might take very long. For this reason, we recommend that you set the SQL timeout value to 24 hours. Once the update has been completed, reset this value to its initial setting.

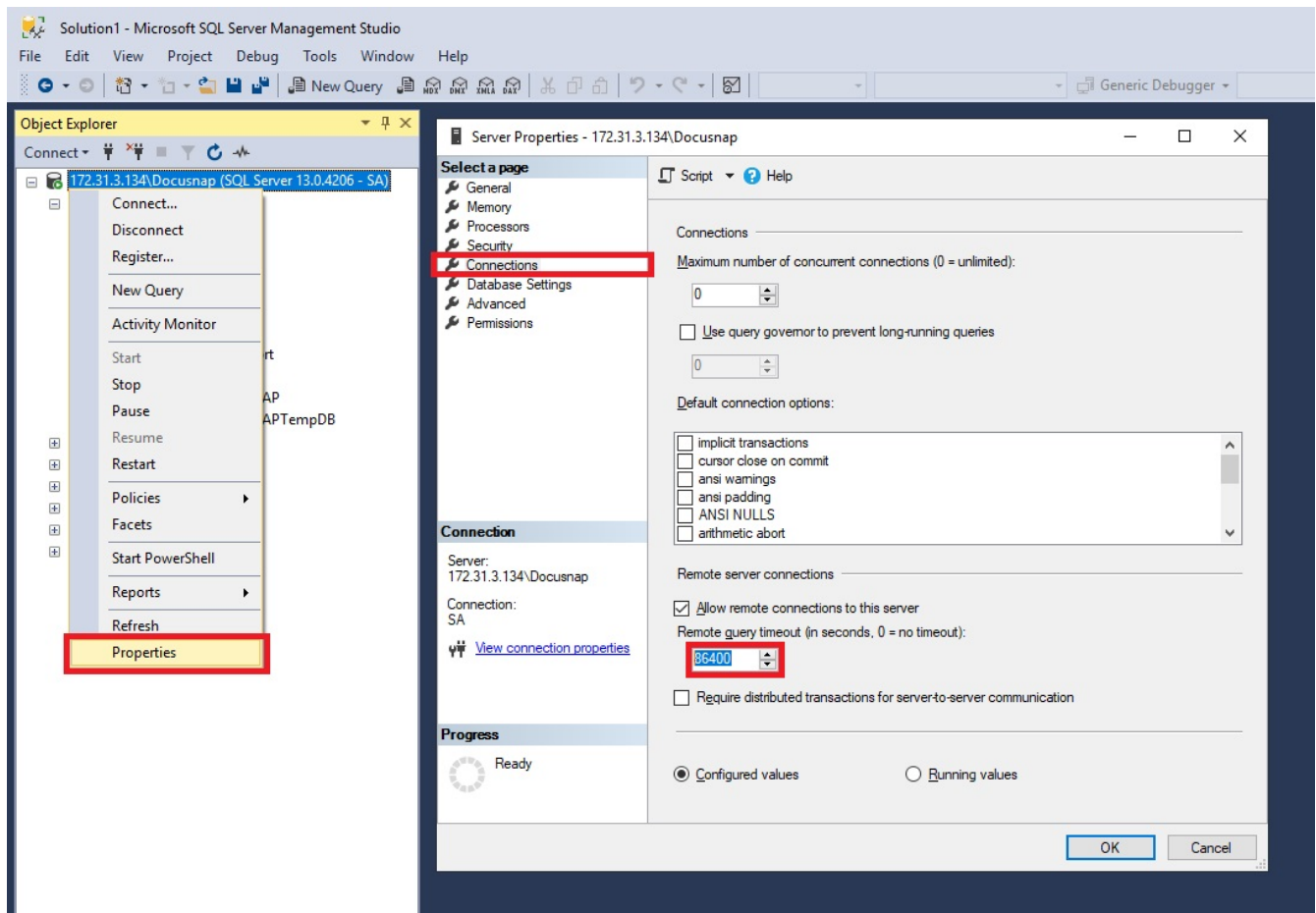


Figure 1 - Setting the SQL timeout to 24 hours

LIST OF FIGURES

FIGURE 1 - SETTING THE SQL TIMEOUT TO 24 HOURS.....	6
---	---

VERSION HISTORY

Datum	Beschreibung
19.09.2016	Version 1.0 – First description of the migration from DS 6.x to DocuSnap X
27.09.2016	Version 1.1 – Migrating large DocuSnap 6.3 databases, DocuSnap Server updates
24.10.2018	Version 1.2 – Link- and download-updates, removal of the DocuSnap beta area, adding the SQL Timeout Screenshot
