



**DocuSnapScript.exe**

*Script-Based Inventory Process*

<b>TITLE</b>	DocusnapScript.exe
<b>AUTHOR</b>	Docusnap Consulting
<b>DATE</b>	04/05/2015

The reproduction and distribution of this document as a whole or in part as well as the utilization and disclosure of its contents to third parties without the express authorization by itelio GmbH are prohibited. Offenders will be held liable for the payment of indemnification. All rights reserved.

This document contains proprietary information and may not be reproduced, neither as a whole nor in parts, in any form whatsoever, nor may it be used by nor may its contents be disclosed to third parties without the written permission of itelio GmbH. All rights reserved.

## TABLE OF CONTENTS

1.	INTRODUCTION	4
2.	BASICS	5
2.1	FILING LOCATION	5
2.2	FUNCTIONALITY	6
2.3	AUTOMATION	6
2.4	REQUIRED PERMISSIONS	6
2.5	PARAMETERS	7
3.	CENTRALLY CONTROLLED EXECUTION	8
3.1	PREPARATIONS	8
3.2	MANAGEMENT CONSOLE (GPMC)	8
3.3	STARTING GPMC	9
3.4	INTEGRATING THE SCRIPT VIA A PARAMETERISED GPO	10
3.5	INTEGRATING THE SCRIPT VIA VB SCRIPT	12
3.6	USING A WMI FILTER	14
3.6.1	HOW TO CREATE THE FILTER	14
3.6.2	HOW TO LINK THE FILTER	15
4.	RUNNING THE SCRIPT MANUALLY	16
5.	IMPORTING THE INVENTORY DATA	17

# 1. INTRODUCTION

This document describes an additional method of how to perform a network-based inventory scan of IT systems that are not or only temporarily connected to the network, such as the notebooks of field service staff. If the systems to be scanned are Window systems, we recommend to use the DocusnapScript.exe script for this purpose.

Corresponding scripts are also available for Linux or Exchange Server systems. They are covered in separate support documents.

This document describes how to integrate DocusnapScript.exe by providing it centrally using group policies or by running it manually.

Then, we will demonstrate how to import the resulting information into the Docusnap database.

## 2. BASICS

### 2.1 FILING LOCATION

When you install Docusnap, DocusnapScript.exe is stored in the *Tools* folder below the Docusnap application directory. This folder can be opened from the Docusnap user interface.

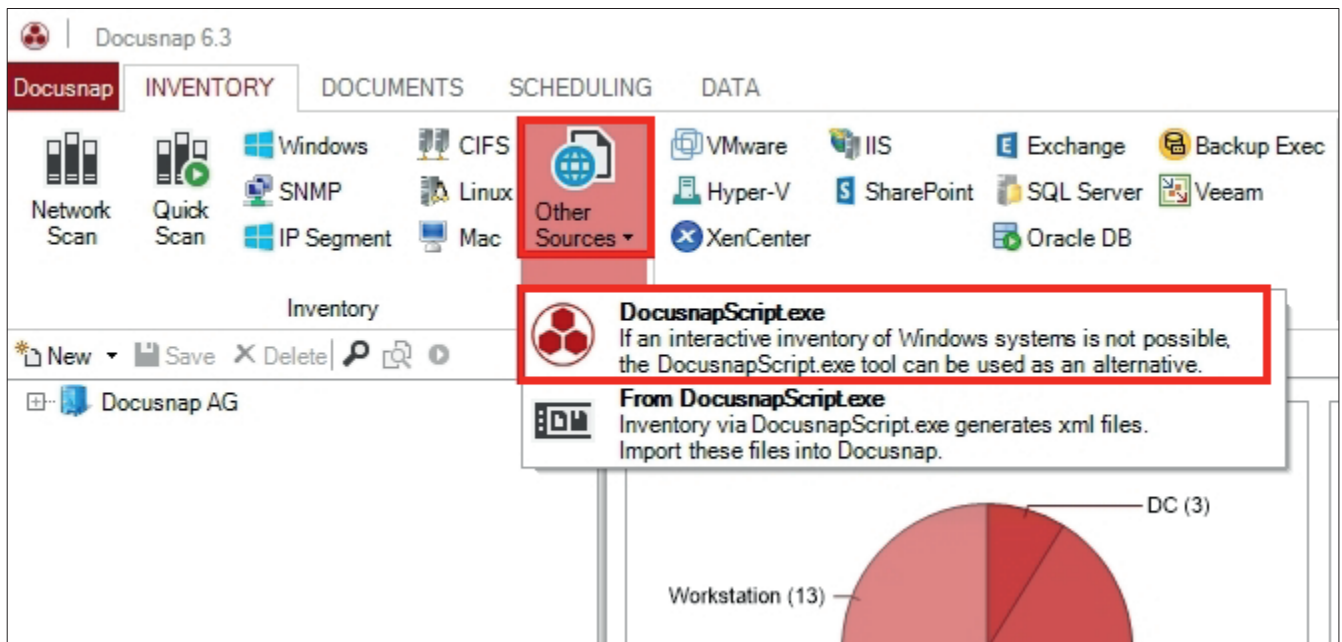


Fig. 1 - Opening the directory from within Docusnap

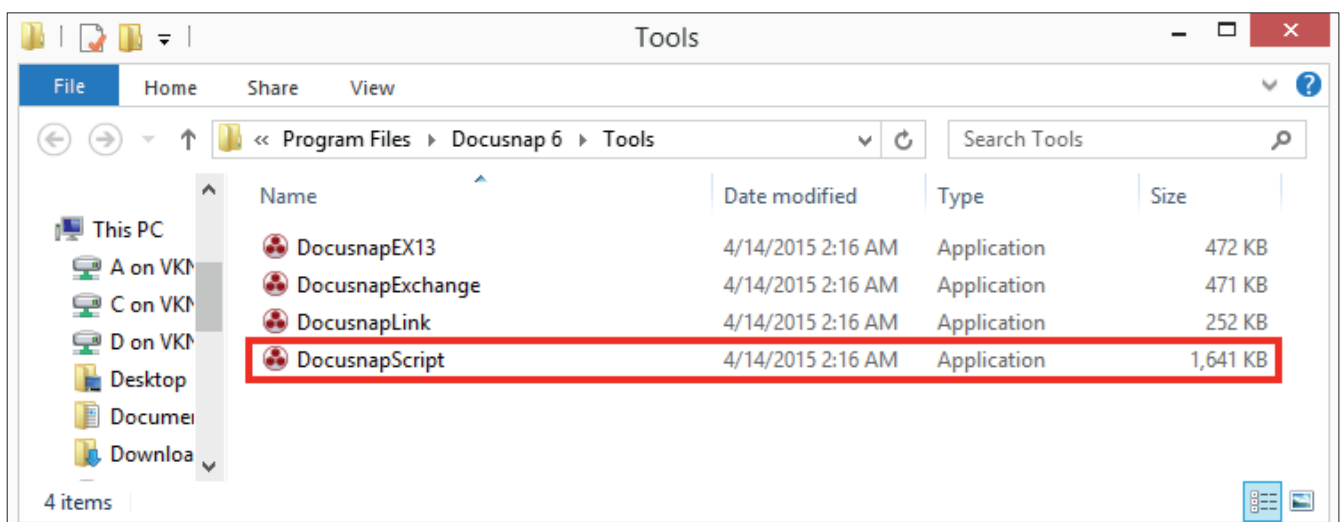


Fig. 2 - Filing location of DocusnapScript.exe

## 2.2 FUNCTIONALITY

When you run the DocusnapScript.exe script, it creates an XML file containing all inventory data of the local system. You can later import this XML file into Docusnap.

For further details, please refer to the IMPORTING THE INVENTORY DATA section.

## 2.3 AUTOMATION

It is also possible to run the DocusnapScript.exe script in an automated way. By specifying corresponding parameters, you can store the XML file created by the script in a central network share and then import it automatically at the time specified in the schedule.

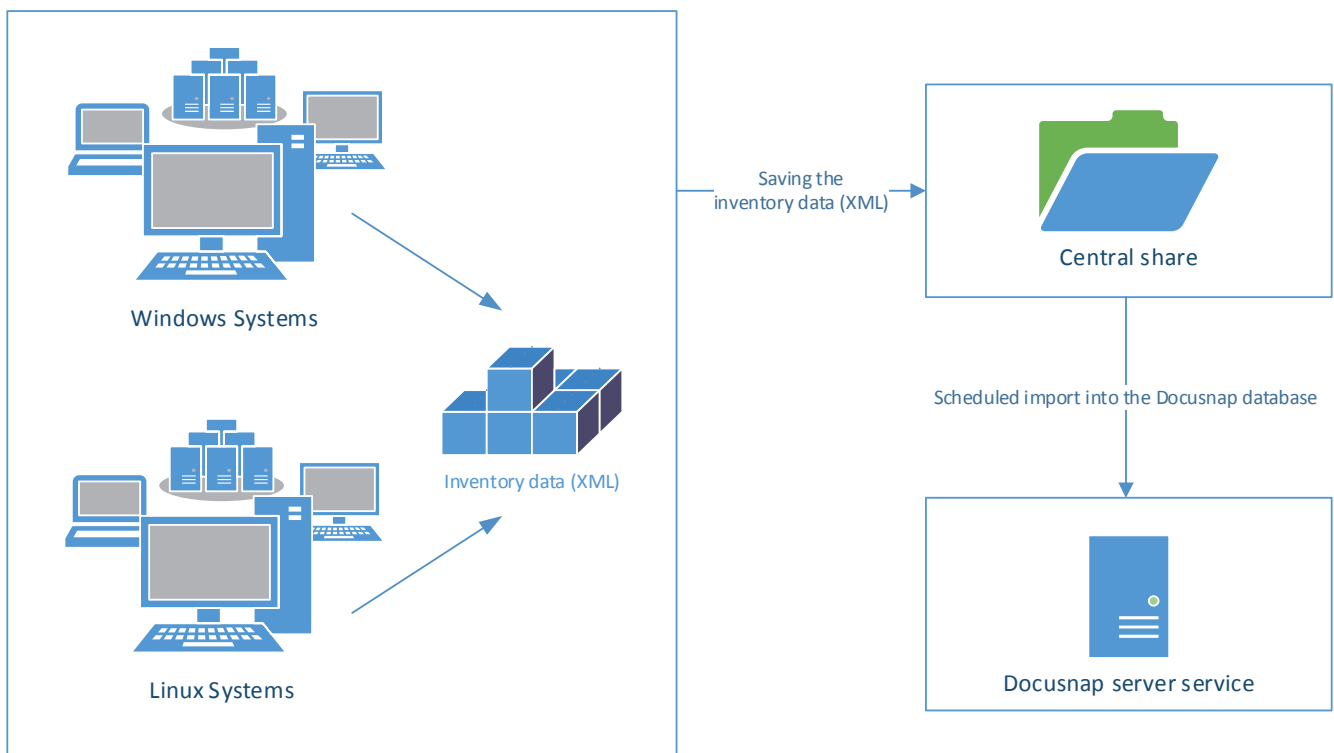


Fig. 3 – Workflow of the automatic import

When you start DocusnapScript.exe while being logged on as a particular user, the script will be run with the permissions of that user account. This means that this user must have a write permission to the central network location.

## 2.4 REQUIRED PERMISSIONS

In order to perform the inventory scan of a local system with DocusnapScript.exe, normal user permissions are sufficient.

## 2.5 PARAMETERS

Available parameters can be viewed by calling DocusnapScript.exe -?

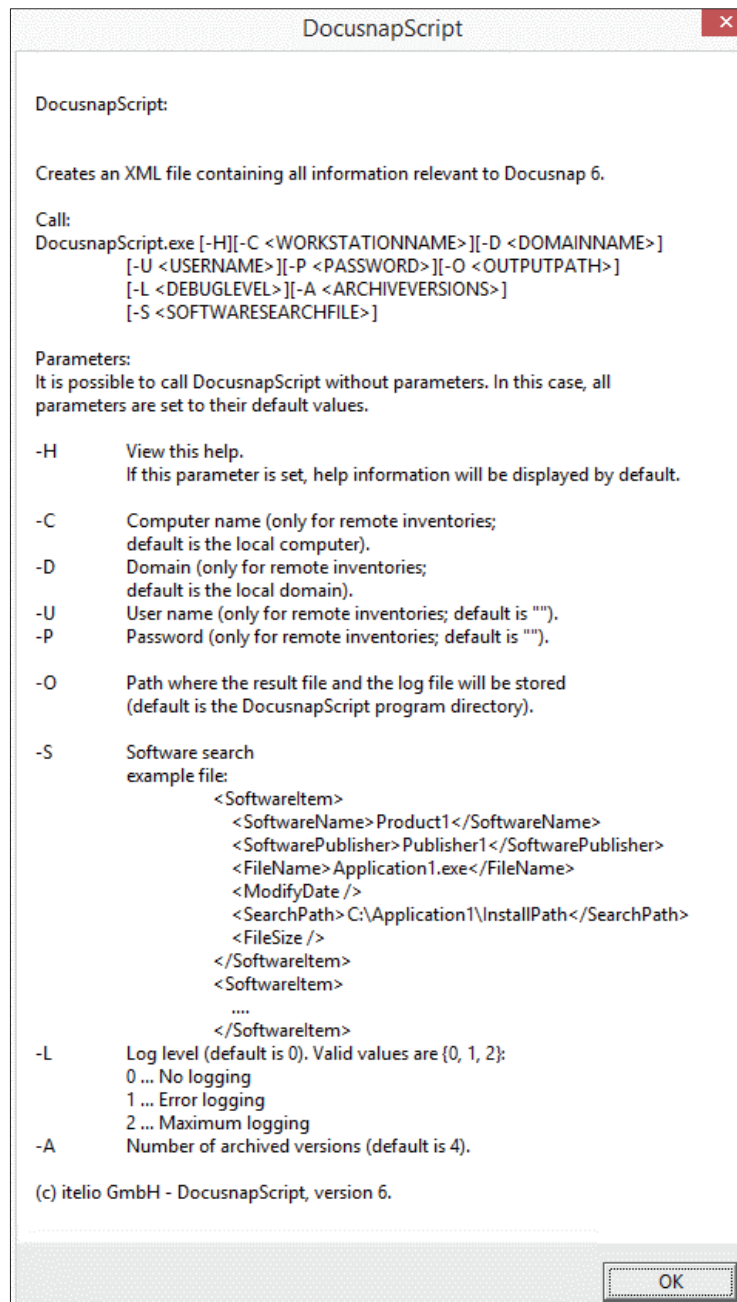


Fig. 4 – DocusnapScript parameters

The following example scans the system and creates the .XML file in the central network share named \\SMDC0001\DC-Share:

```
DocusnapScript.exe -O \\SMDC0001\DC-Share\
```

## 3. CENTRALIZED EXECUTION

### 3.1 PREPARATIONS

A particularly efficient variant for the distribution of logon scripts is to use a group policy object (GPO). Depending on the inventory requirements, this can either be done via a user configuration or a computer configuration.

The DocusnapScript.exe script can be made available under `\\%userdomain%\netlogon`. DocusnapScript.exe will then be distributed to other domain controllers in the infrastructure by the Active Directory replication feature.

Depending on the Active Directory infrastructure, the distribution of group policies and logon scripts can take some time (in most cases, it is done within 15 minutes).

For information on how to check the status of the group policies infrastructure and on Active Directory replication issues, please refer to: <https://technet.microsoft.com/de-de/library/jj134176.aspx>

A central storage path must be provided for storing the XML files. All users or computers who are supposed to save files must have access to this path.

### 3.2 MANAGEMENT CONSOLE (GPMC)

For the following examples, the Microsoft Group Policy Management Console (GPMC) tool is used.

If the Microsoft Group Policy Management Console has not been installed on your system, you can download it for free from Microsoft. It is strongly recommended to previously test this in a test environment or to implement the settings only in a dedicated test OU (*organisational unit*) in the Active Directory.

The remote server management tools that include the GPMC can be downloaded from the Microsoft website for the Windows client operating systems.

For Windows 7: <http://www.microsoft.com/de-de/download/details.aspx?id=7887>

For Windows 8: <http://www.microsoft.com/de-DE/download/details.aspx?id=28972>

For Windows 8.1: <http://www.microsoft.com/de-DE/download/details.aspx?id=39296>

Windows Server operating systems (2008 and higher) already include the GPMC, but it might be necessary to install it subsequently via the Server Manager.

For more information on the group policy management console and its options, please refer to: <https://technet.microsoft.com/de-de/library/cc753298.aspx>



### 3.3 STARTING GPMC

To start the Group Policies Management Console, open the Windows Run dialog (Windows key+R) and enter *gpmc.msc*.

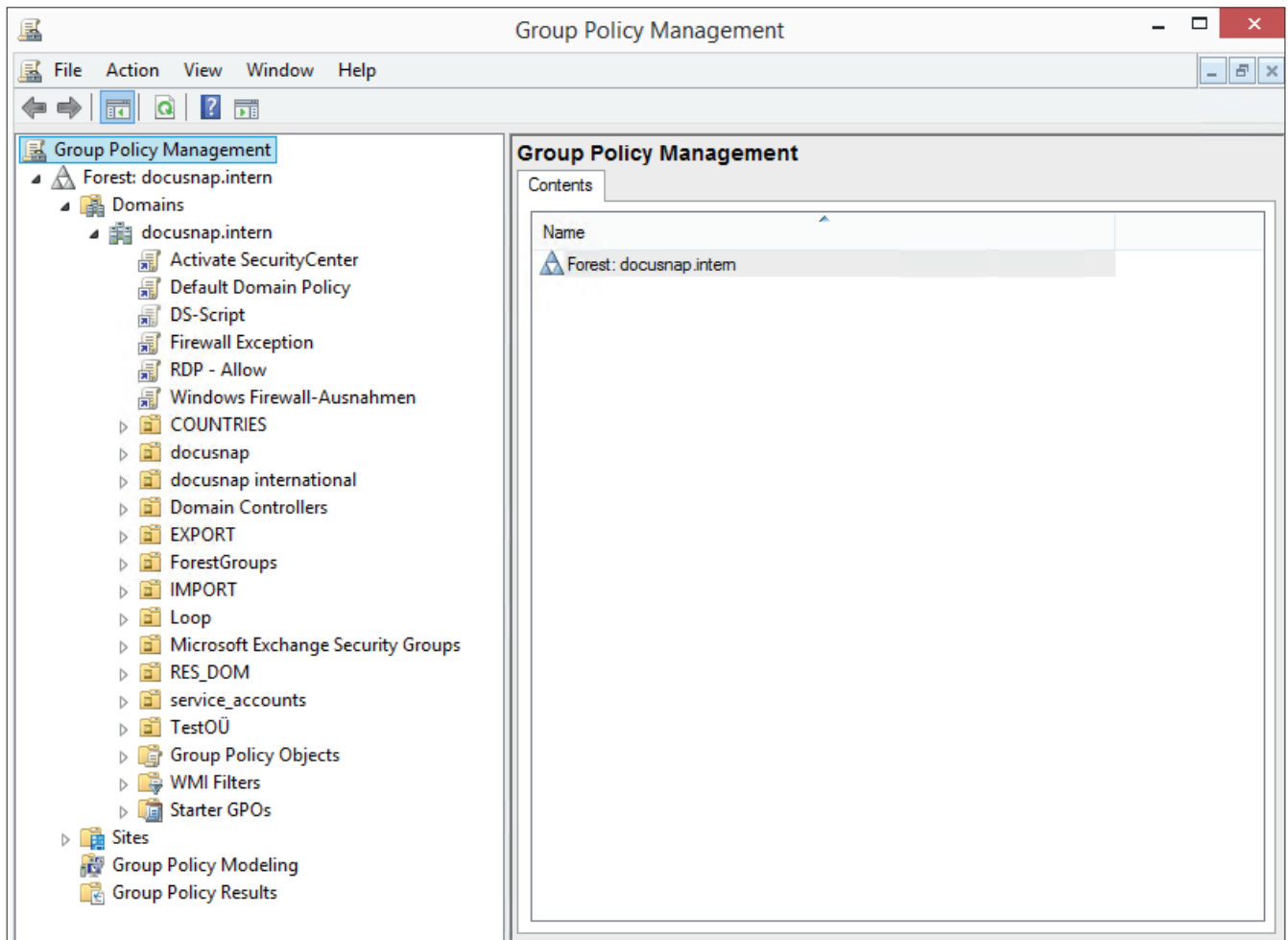


Fig. 5 – Group Policy Management

### 3.4 INTEGRATING THE SCRIPT VIA A PARAMETERISED GPO

**Step 1:** Right-click the desired group policy object and click Edit.

**Step 2:** User Configuration / Computer Configuration => Windows Settings => Scripts

**Step 3:** Double-click Logon / Logoff (or Startup / Shutdown)

**Step 4:** Add a new script and enter the required data

Script Name: `\\%userdomain%\netlogon\DocusnapScript.exe`

Script Parameters: `-o \\UNC_path`

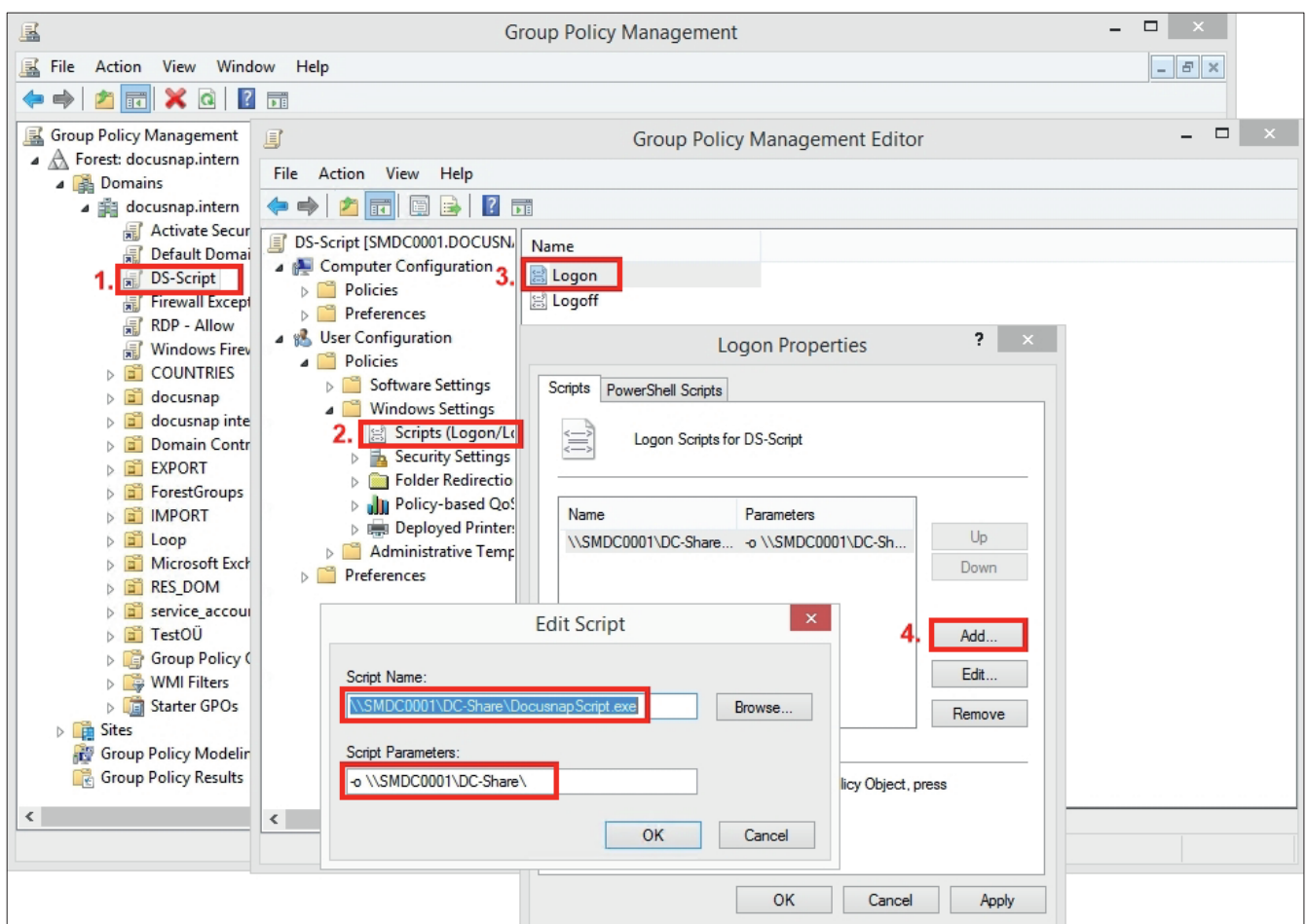


Fig. 6 – Integrating DocusnapScript.exe via a GPO

Step 5:

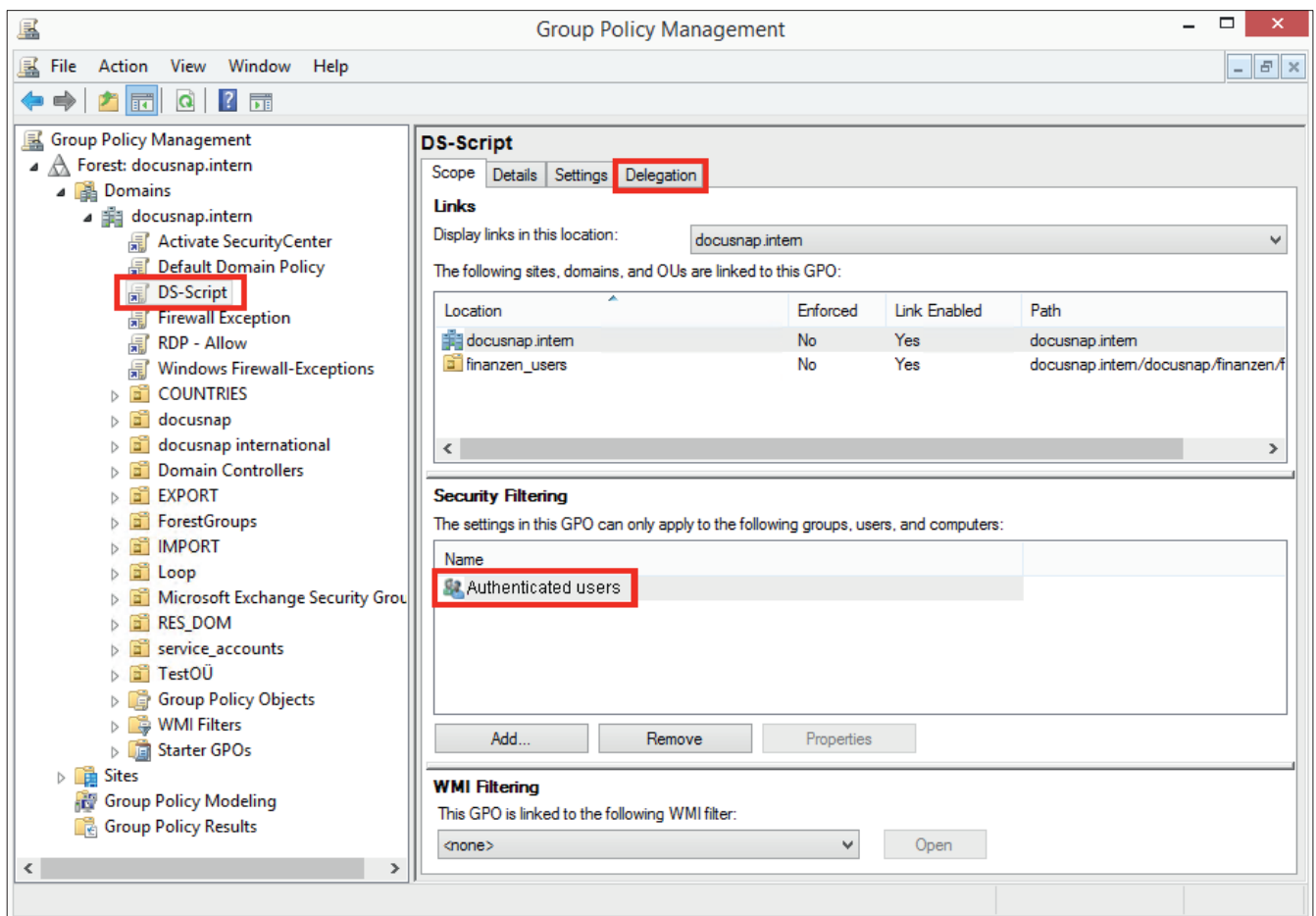


Fig. 7 – Setting Security Filtering

Make sure to select the desired users or groups in the Security Filtering group. In addition, open the *Delegation* tab to check which users and groups have the right to access this GPO.

### 3.5 INTEGRATING THE SCRIPT VIA VB SCRIPT

**Step 1:** Right-click the desired group policy object and click Edit.

**Step 2:** User Configuration / Computer Configuration => Windows Settings => Scripts

**Step 3:** Double-click Logon / Logoff (or Startup / Shutdown)

**Step 4:** Add a new script and enter the required data

Script Name: `\\%userdomain%\netlogon\DS-Script.vbs`

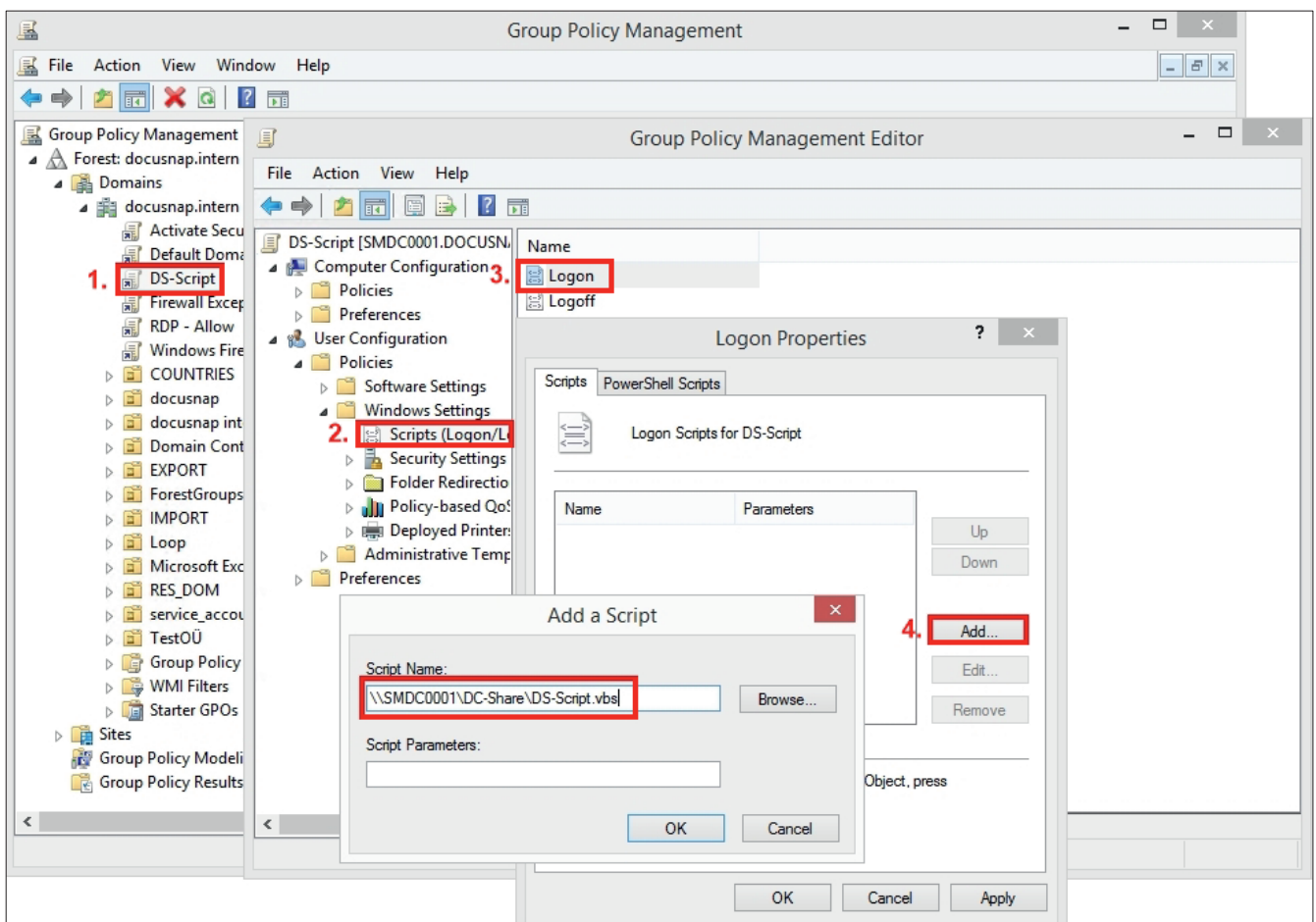


Fig. 8 – Integration via VB script

Sample DS-Script.vbs file:

```
on error resume next
Set WshShell = WScript.CreateObject("WScript.Shell")
WshShell.Run "\\DOCUSNAP\\Netlogon\\DocusnapScript.exe -o \\\SMDC0001\\Public\\DS-Script"
```

For information on how to correctly use quotes in VB, please refer to:

[https://msdn.microsoft.com/de-de/library/267k4fw5\(v=vs.110\).aspx?cs-save-lang=1&cs-lang=vb#code-snippet-1](https://msdn.microsoft.com/de-de/library/267k4fw5(v=vs.110).aspx?cs-save-lang=1&cs-lang=vb#code-snippet-1)

Step 5:

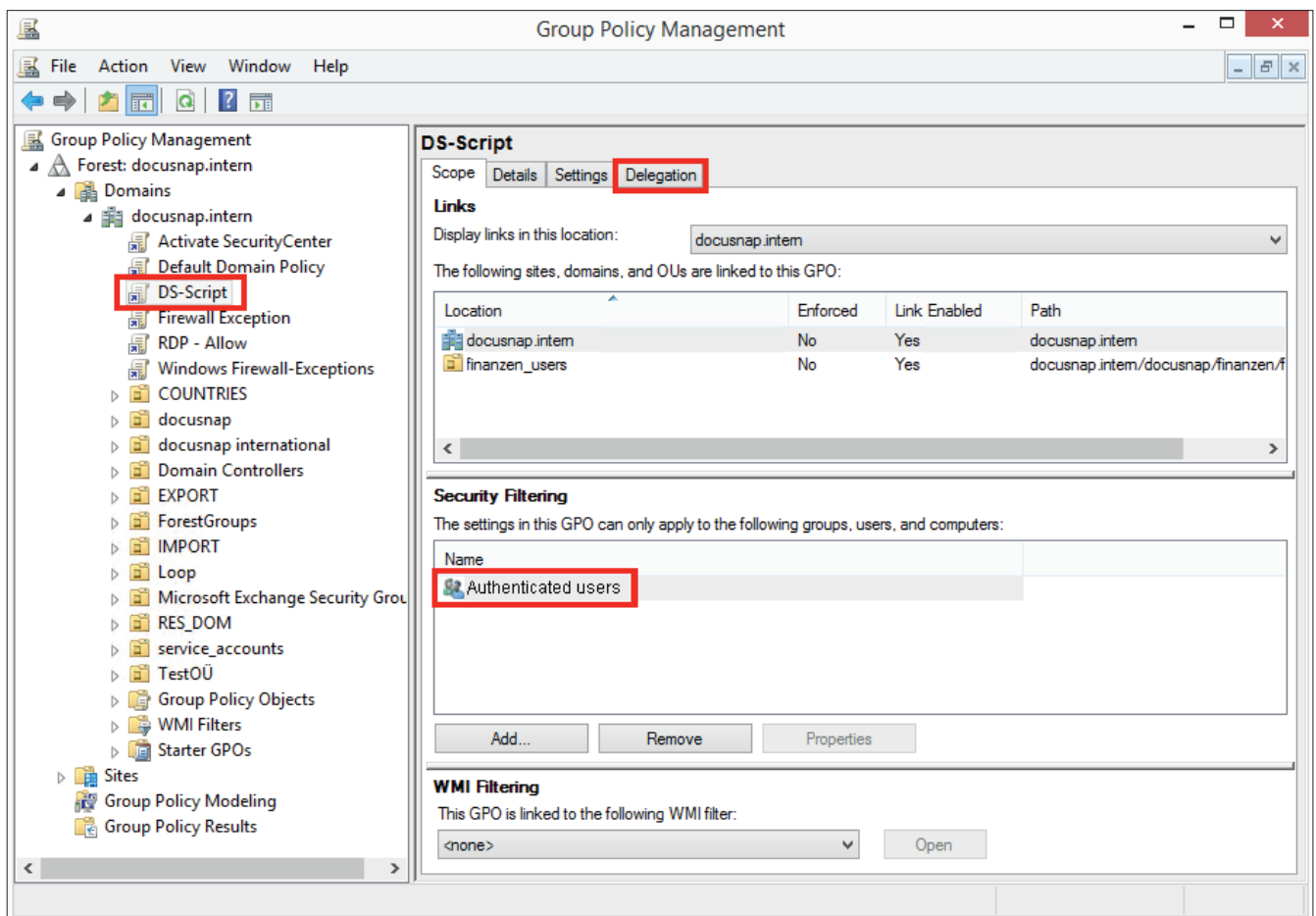


Fig. 9 – Setting Security Filtering

Make sure to select the desired users or groups in the Security Filtering group. In addition, open the *Delegation* tab to check which users and groups have the right to access this GPO.

## 3.6 USING A WMI FILTER

### 3.6.1 HOW TO CREATE THE FILTER

In some cases, it might be necessary to restrict the validity of a GPO, independent of the OU it is linked to. This may be useful if the computer accounts in the Active Directory are dispersed over many OUs and you want to restrict the inventory to be performed via a Docusnap script to some devices.

Below, we explain how you can do this using a WMI filter.

**Step 1:** Right-click the WMI Filters node in the Group Policies Management Editor to create a new filter.

**Step 2:** Enter a descriptive name for the filter.

**Step 3:** Add the corresponding query for the root\CIMv2 namespace.

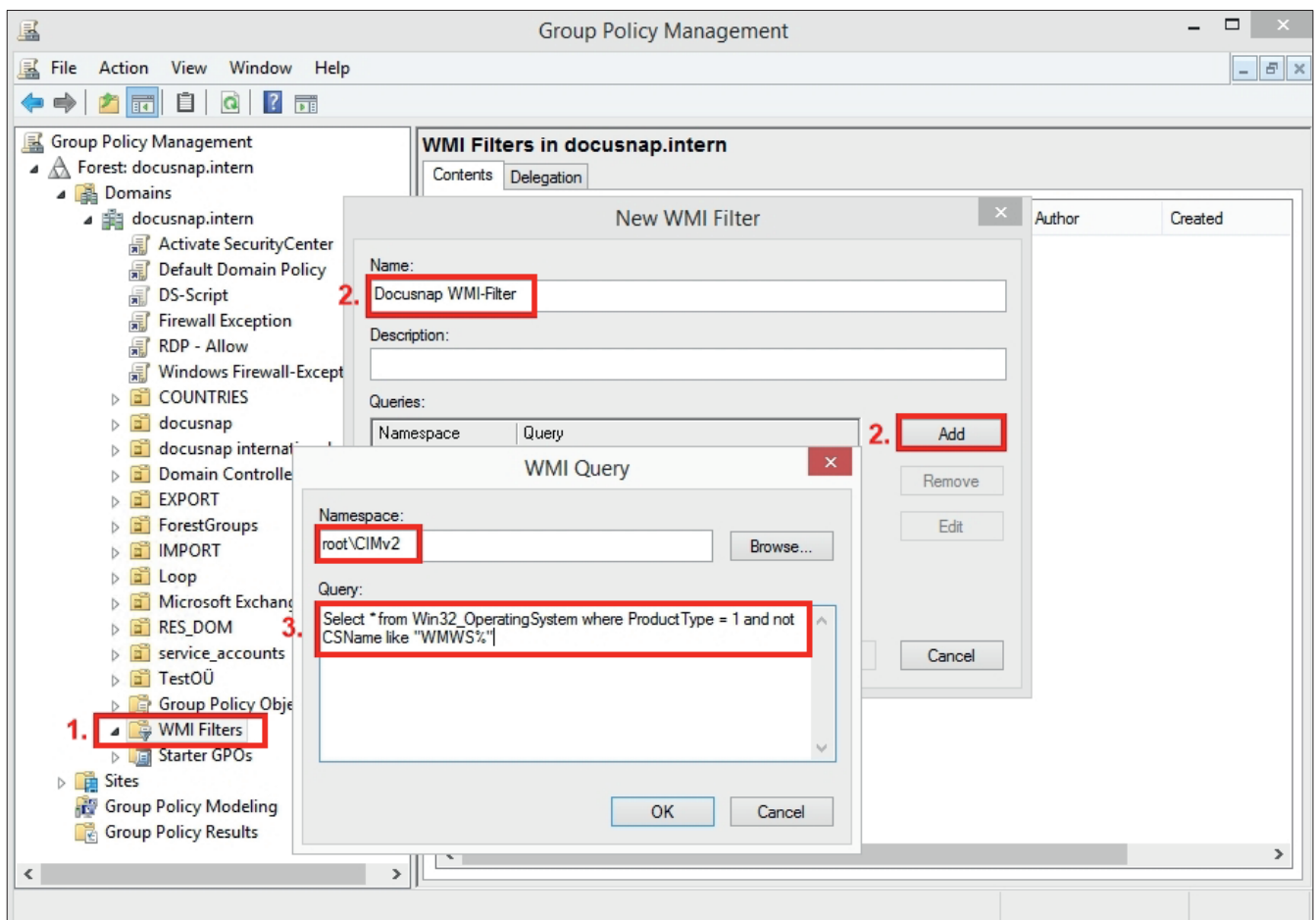


Fig. 10 – Group Policy Management

### Sample WMI query:

```
Select * from Win32_OperatingSystem where ProductType = 1 and not CSName like "WMWS%"
```

⇒ This query selects all clients whose name starts with WMWS.

⇒ The "ProductType" variable returns the following values:

1 = Microsoft Windows client operating systems (e.g. Windows XP, Windows 7, Windows 8)

2 = Microsoft Windows Server operating systems configured as domain controllers

3 = Microsoft Windows Server operating systems not configured as domain controllers

### 3.6.2 HOW TO LINK THE FILTER

Link the newly created WMI filter to the group policies object that calls the DocusnapScript.exe script.

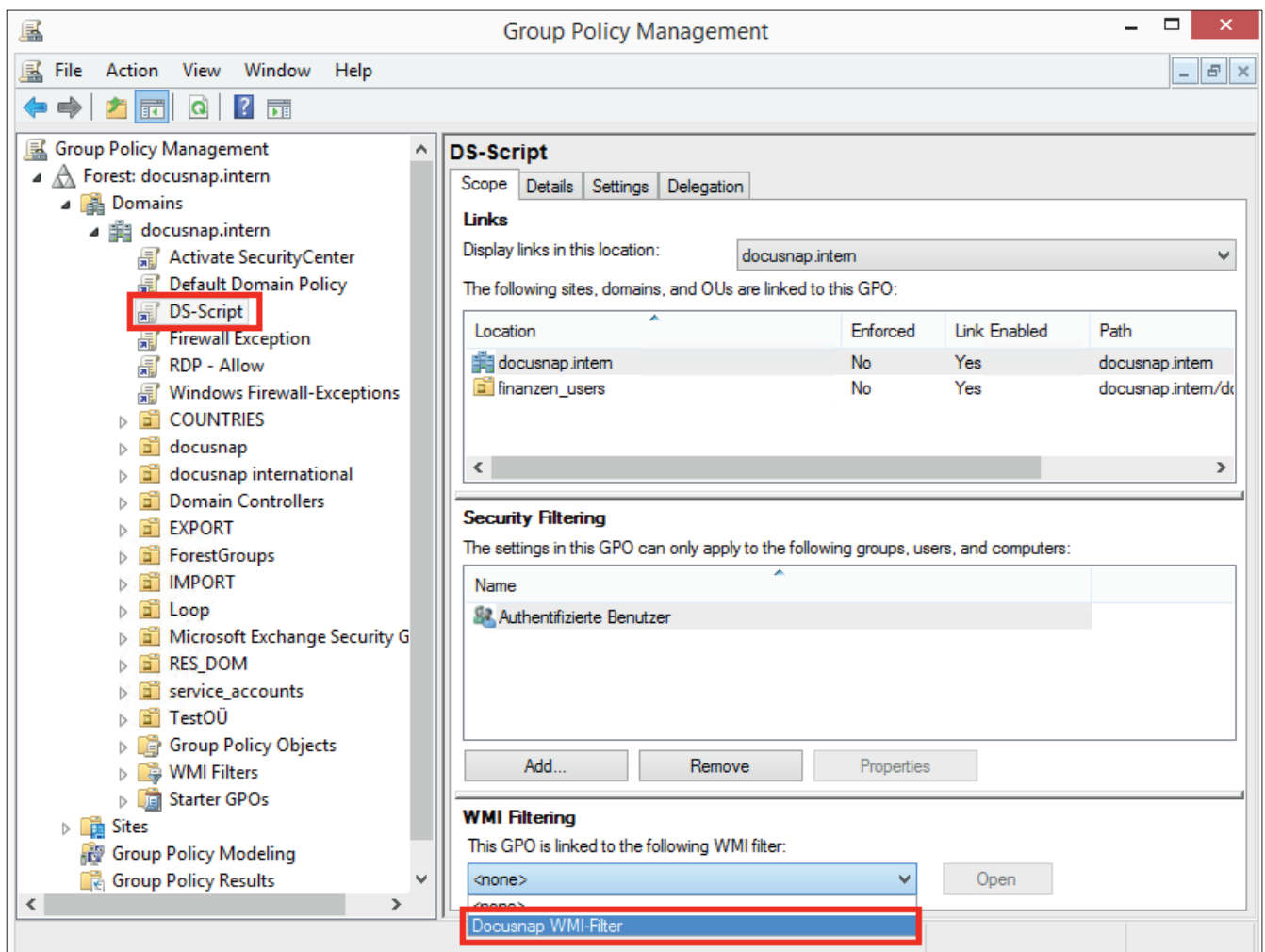


Fig. 11 – Linking the WMI filter

This link is also visible from the WMI filter properties.

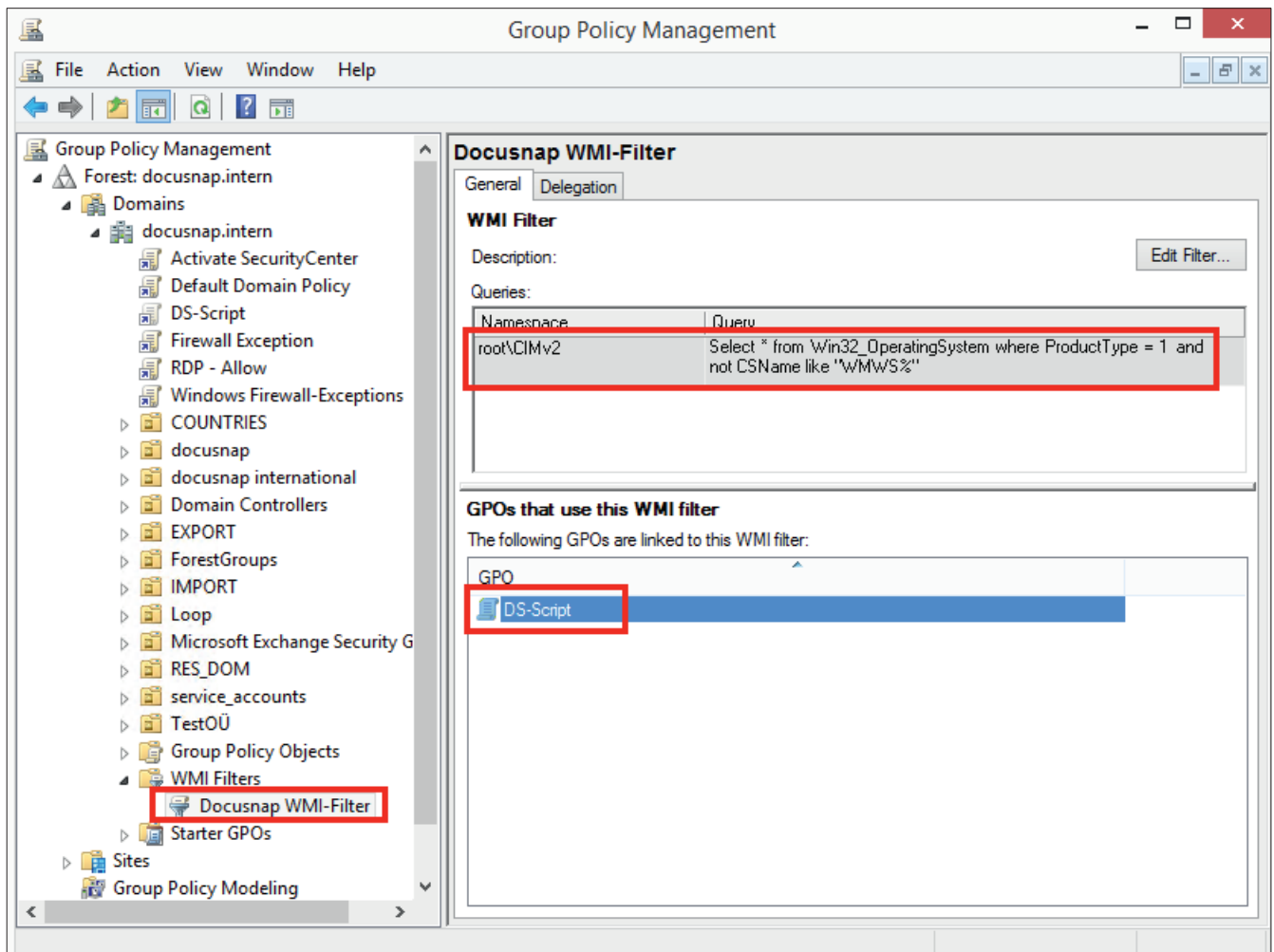


Fig. 12 – WMI filter

For more details on how to work with WMI filters, go to the Microsoft website: <https://technet.microsoft.com/de-de/library/cc732796.aspx>

## 4. RUNNING THE SCRIPT MANUALLY

In cases where the system to be scanned is not connected to the network, it makes sense to run DocusnapScript.exe manually. This is also advisable in cases of network access problems (e.g. due to Firewall settings, WMI access problems, etc.) that cannot be solved at all or not immediately. In these cases, create the XML files locally and use a USB stick to transfer them to the network. From there, you can import them either manually or automatically into Docusnap (provided the files have been copied to the central import share).

Then, just run the DocusnapScript.exe file on the system to be scanned. By default, the XML file will be stored in the folder where the DocusnapScript.exe file resides.

For an overview of the inventory parameters for manual execution, please refer to section 2.5 – PARAMETERS.



## 5. IMPORTING THE INVENTORY DATA

Using the Docusnap script import feature, you can import the xml files generated by the script into Docusnap.

To open the Import wizard, select *Inventory > Other Sources > From DocusnapScript.exe* from the user interface.

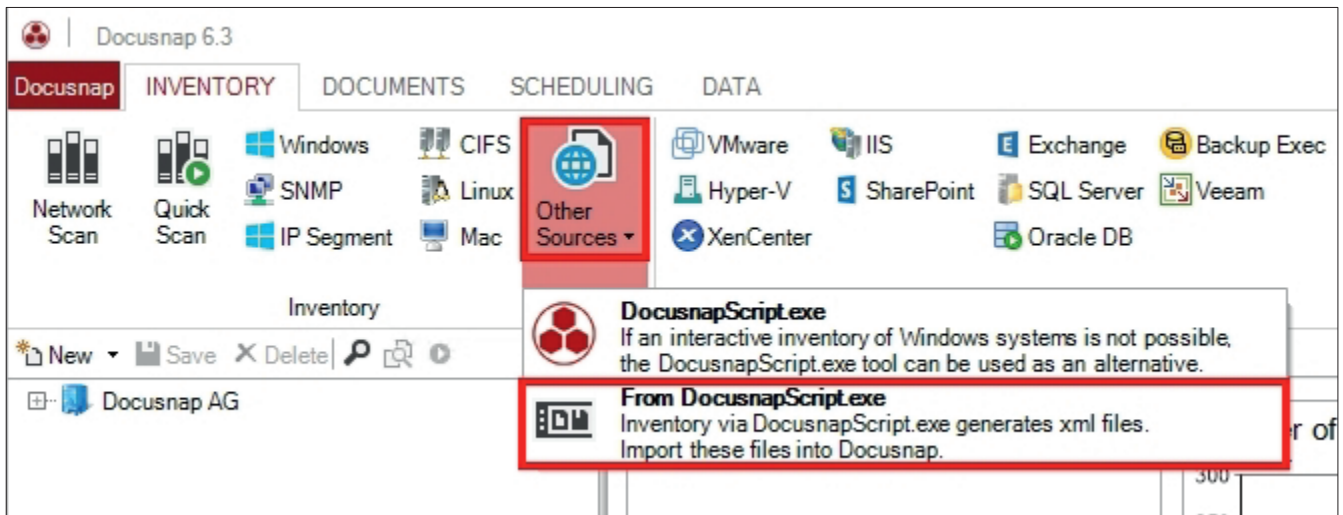


Fig. 13 – Opening the Import wizard

In the first step, select the desired company and domain for the import. Then, specify the path for the XML files.

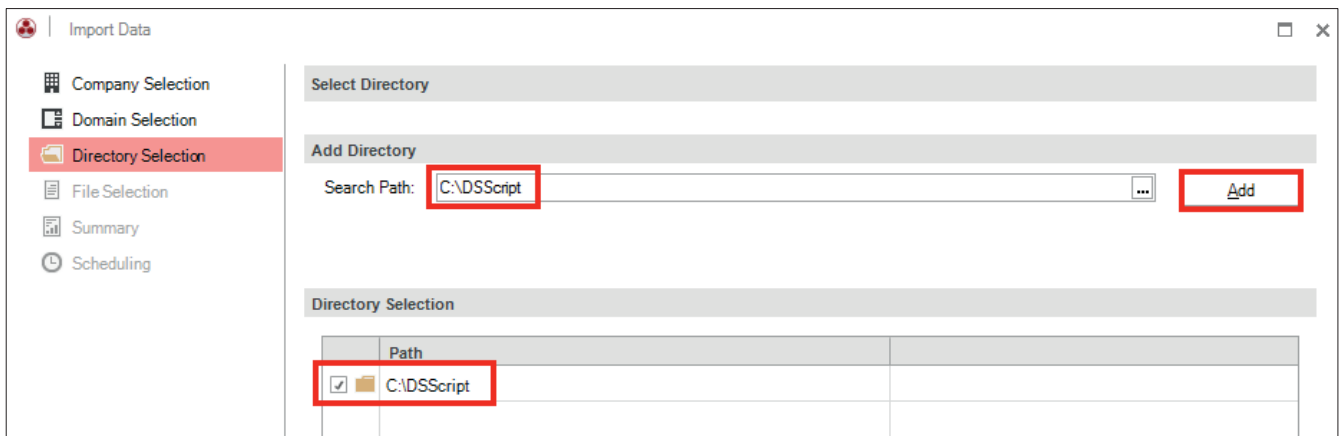


Fig. 14 – XML import

Specify the directory or UNC path of the central share from which to import the XML files. If you want to schedule automated imports, make sure that the user who configured the Docusnap Server service has read and write access to that directory.

Import Data

- Company Selection
- Domain Selection
- Directory Selection
- File Selection
- Summary
- Scheduling**

☒ Schedule File Import

**General Settings**

Name: Docusnap Script Import

Schedule Type: Recurring

Every Week on Wednesday, Saturday at 3:07:30 AM. Schedule will be used on 4/27/2015.

**Frequency**

Interval: Weekly

Recurring every: 1 Week(s) on:

☐ Monday ☒ Wednesday ☐ Friday ☒ Saturday

☐ Tuesday ☐ Thursday ☐ Sunday

**Frequency per day**

☒ One-time at: 3:07:30 AM

☐ Every: 1 Hour(s) Start: 12:00:00 AM End: 11:59:59 PM

**Duration**

Start Date: 4/27/2015 ☒ No End Date ☐ End Date: 4/27/2015

Fig. 15 – Scheduling the automated import

Under Scheduling, you can create a job for this import, i.e. the XML files created by the script will be imported at the times specified there.

However, this is only possible if Docusnap Server has been configured before (please refer to the User Manual under <http://www.docusnap.com/handbuch/anwender/index.html?docusnap-server.htm>)

## LIST OF FIGURES

FIG. 1 - OPENING THE DIRECTORY FROM WITHIN DOCUSNAP .....	5
FIG. 2 - FILING LOCATION OF DOCUSNAPSCRIPT.EXE .....	5
FIG. 3 – WORKFLOW OF THE AUTOMATIC IMPORT .....	6
FIG. 4 – DOCUSNAPSCRIPT PARAMETERS .....	7
FIG. 5 – GROUP POLICY MANAGEMENT .....	9
FIG. 6 – INTEGRATING DOCUSNAPSCRIPT.EXE VIA A GPO.....	10
FIG. 7 – SETTING SECURITY FILTERING .....	11
FIG. 8 – INTEGRATION VIA VB SCRIPT .....	12
FIG. 9 – SETTING SECURITY FILTERING .....	13
FIG. 10 – GROUP POLICY MANAGEMENT.....	14
FIG. 11 – LINKING THE WMI FILTER.....	15
FIG. 12 – WMI FILTER.....	16
FIG. 13 – OPENING THE IMPORT WIZARD.....	17
FIG. 14 – XML IMPORT .....	17
FIG. 15 – SCHEDULING THE AUTOMATED IMPORT.....	18



**Docusnap<sup>®</sup>**

support@docusnap.com | [www.docusnap.com/en/support](http://www.docusnap.com/en/support)  
© itelio GmbH - [www.itelio.com](http://www.itelio.com)